

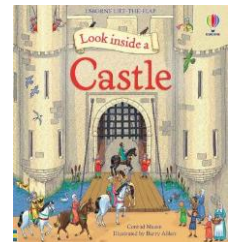
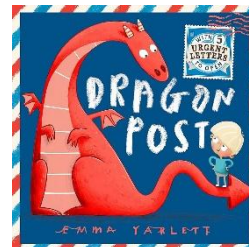
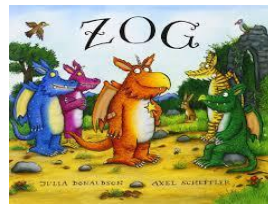
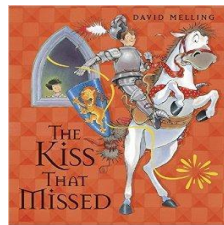
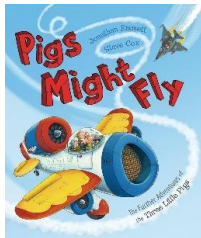
Once upon a time...

Dear Parents,


We really hope you have a wonderful half-term break. We will start next term by sharing our half-term news and we are looking forward to hearing about how they spent their time. Our topic next term is '**Once Upon a Time**'. We will be spending time learning about castles, knights, kings and queens and various fairy tales. As part of this topic, we will look at non-fiction books and will be writing letters, posters and invitations. We are also hoping

to visit a local castle to enjoy exploring a real castle setting. We will be exploring different materials and how things are made, including the houses of the 'Three Little Pigs', constructing and investigating their states of matter.

Some of the texts we will be looking at are:



Home Learning

<p>Reading</p>	<p>As per last term, your child will bring one Little Wandle book home each Monday. Please read with your child regularly, even if it is just for 5 minutes.</p> <p>It is important that the children bring their reading books and their reading record book every day. When reading with your child, please acknowledge the fact that the book has been read by logging this on BoomReader.</p> <p>The sounds and the tricky words we are covering are outlined in the Little Wandle sheets that are provided in their reading folders/book bags.</p>	
<p>Writing</p>	<p>The children will continue to practice their letter formation. We are trying to encourage them to become more independent writers, so please encourage them to write in as many contexts as possible (cards to relatives/friends, shopping lists, signs around the house).</p>	
<p>Maths</p>	<p>The most important thing for children in their reception year is that they can read, write, order and recognise numbers to 10. Please encourage the children to count their toys when playing and try to write and use numbers when appropriate at home.</p>	

Key questions to ask your child at home:

Who lived in a castle?

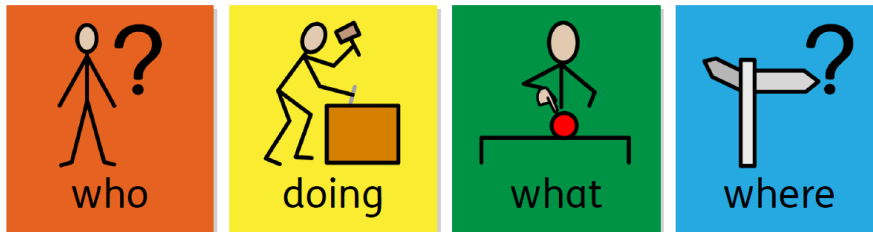
How is living in a castle different to living in a house?

Who worked in a castle?

What job would you like to have done in the castle?

What is the structure of the story?

Who are the main characters? Where is the story set?



Quick Reminders

- Please can you make sure your child brings in a named water bottle and their book bags each day. They must also always have a coat, even if it is sunny first thing in the morning.
- If you would like to provide a snack for your child, this must be fruit/a healthy alternative. We have fruit available for them each day, this is just if they prefer something from home!
- Our first **forest school** session is 3rd April.
- Show and tell is every Wednesday – please do not allow them to bring toys as we can't be responsible for the loss/damage of these.

Thank you for your support,

Miss Taylor, Miss Eldridge and Miss Waterman