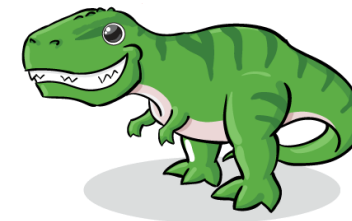


Year 1&2 Term 4 Newsletter

'Dinosaurs'



Dear Parents,

I hope you had a lovely half term! This term we will be continuing with our topic of 'Dinosaurs': focusing more on how dinosaurs changed over the years, and theories on the extinction event! Our PE days are Tuesdays and Fridays, please ensure your child's kit is always in school; as the timetable can sometimes change - trainers and coats **everyday** are essential.

Reading	Please read with your child regularly. Their books and book bags will need to be in every day. You may like to add a positive or helpful comment in their reading diary, but please acknowledge the fact that the book has been read by signing and dating in the comments space. A member of staff will be checking reading records during the week and children are expected to have read at least 3 times a week with an adult. Children can change their reading books at any time, please remind them to if they need a new book.
Spellings	Spelling tests are every Thursday and your child will be tested on the spellings they were given in the previous week. We send out new spellings on Fridays. We use the 'No-Nonsense' Spelling scheme in class and spellings sent home for homework will be derived from the Year 1&2 curriculum word lists. Please do ask if you would like to see the resources we use or would like to know more about how we assess the children's spelling. Their spelling tests results will be recorded in their books for them to share with you at home.
Times Tables	It is expected that by the end of KS1 all children will know their 2, 5 and 10 times tables fluently (and hopefully some others!).
Maths	Maths homework will be on Mathletics and should consist of 30 minutes per fortnight , the children can compete against each other or complete their own timed skills trials - I will be able to see clearly areas in which they need more focus and how many minutes they spend online. If you do not have access to the internet at home, please let us know and we can arrange a time for the child to complete it at school. If your child has misplaced their login details, let a member of staff know and we can give you a copy.

Helping to enrich our topics

It is always great to have items or visitors that support our topic, so if anyone has any experience or items that may help us with any of the work above that we could hear about or borrow, we would love to see and hear about them. We are also looking for parent readers during the morning!

Reminders - Please make sure your child brings in a water bottle each day with fresh water; ensure all jumpers are labelled and bring a coat for any wet weather. From now on, children in KS1 are not to bring pencil cases into school, please remind your children not to bring them in.

Many thanks and I hope you have a great term!

Mrs King

Reading at school and at home

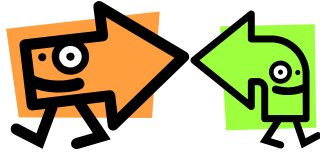
Reading strategies the children use in school and can be referred to at home.

I could sound out the word.

dog

sweet

I can miss out the word. Then I could read on to the end of a sentence and then go back and check what would make sense.



I look for smaller words in words.

butterfly

cat

handwriting

I talk through my ideas, thoughts and feelings about what I am reading so I understand it.



When I read I imagine what is happening and create a picture in my mind.



I use the pictures to help me.



Art

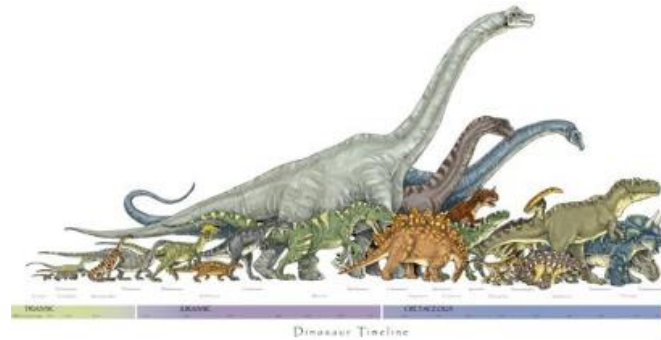


Papier-mâché meteors and Volcano pictures



History

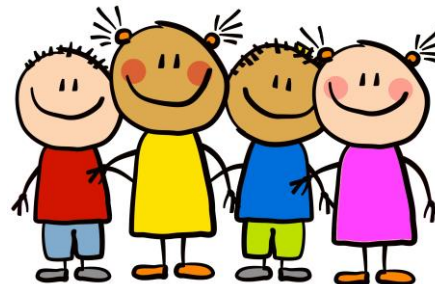
How did the dinosaurs become extinct?



PSHE



Relationships



Computing



Purple Mash



RE



What happens at Easter?



Music



Charanga!



Useful Websites:

<http://www.bbc.co.uk/programmes/b00sy534/clips>

<https://www.bbc.co.uk/cbeebies/shows/andys-dinosaur-adventures>

<https://www.topmarks.co.uk/maths-games/5-7-years/counting>

<https://community.mathletics.com/signin/#/student>

Questions you could ask your child about their learning this term:

- What does 'extinct' mean?
- How do you think the dinosaurs became extinct?
- What is your favourite dinosaur and why?
- Can you count up in 3's?
- What do the big hand and little hand on the clock show?

