



East Hoathly C.E. School  
Church Marks Lane  
East Hoathly  
Lewes  
East Sussex  
BN8 6EQ

Telephone: 01825 840247

NEWSLETTER 30  
Friday 15th June 2018

Executive Headteacher:

Mr James Procter

Email: office@easthoathly.e-sussex.sch.uk

## Ofsted

The staff and Governors would just like to say a huge thank you for your support on Tuesday.

A full report on how the inspection went will be released in a fortnight's time.

Thank you so much, we are incredibly lucky to have such supportive parents in our school.



## WORD OF THE WEEK

**Prudent**

Defi-  
of Prudent  
English:

nition  
(adjective) in

1) Acting with or showing care and thought for the future.

## Residential - key details

Miss Purcell, Miss Hillier (first aid/administrator of medicines) and Mr Lawrence are looking forward to seeing the children at Blacklands Farm on Monday.

Children should arrive by 10am on Monday the 18th of June. The children can bring no more than £10 and should NOT bring electronics. Children should be picked up at 2.30pm on Friday the 22nd.

A letter will be making its way to you with further details about the trip.



## FPTA

Last weekend, we were invited to an Open Garden at Sayerland House, in Polegate, to provide refreshments and raise funds for the school. We had a fabulous afternoon enjoying the gardens, whilst serving teas and homemade cakes, and we raised £250! A special thanks to our young helpers and all who made cakes for the event.



## Year 6 Leaver Hoodies

Year 6 got presented with Leavers Hoodies today from Mrs Bushell and the FPTA. Year 6 were surprised as they didn't realise they would get them in celebration assembly!

Aidan said "They are super comfortable, they are designed well and I love the fact that my name is on the back! Miss Purcell and Miss Moore got one as well - they loved them."

Thank you on behalf of all the class for arranging this - they will keep the children warm on residential and they will treasure them forever!!



## Year 3 and 4 Trip to Fishbourne



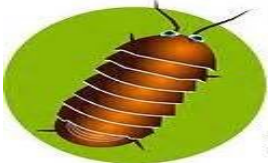
Year 3 and 4 from East Hoathly and Chiddingly went to Fishbourne on Thursday.

There will be a full write up of their day in next week's newsletter.



## Growth Mindset

### Tough Woodlouse of the Week



Jessica

Ruff

for persevering and working really hard in maths by attempting spicy challenges.



British

Values

### Citizen of the Week

Myla Bulba

for

being kind, caring and supportive to the visitors in the classroom.

## Federation News



This term, there are plans for the children to see each others' dress rehearsals across the Federation.

Also, this term, there will be a transition morning on Monday 9th July where the children will meet their new teachers.

Miss Riddall, next year's Year 3 and 4 teacher, will be on the playground in the morning.



## Learning Powers Certificate

On Friday 22nd of June, there will be a celebration assembly at 9.15am,

the following children will be celebrating their achievements:

Reception	Max Webster
Year 1/2	Jake Frizzell
Year 3/4	Sophia Watton-Hall
Year 5/6	Miss Moore





This term, Year 1 and 2 will be taking part in Forest School. A letter will be going out with the details of what days the children will be doing Forest School.

The Year 1 and 2 topic this term is 'Castles' and they will be using the natural resources around them to explore their topic.

Please can you ensure your children have their Forest School kits in school on the day they need them.

Thank you!



## Volunteer Helpers

If any parents would like to volunteer in the school please see Miss Dutton in the school office to complete the required paperwork.

We welcome volunteers to help with readers, forest school, swimming and some school trips.



## Attendance

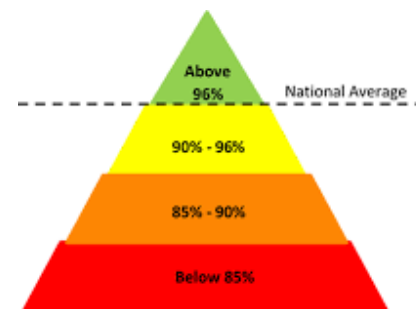
The whole school attendance for this year so far is: **94.7%**

This week's attendance: **96.5%**

Reception - **91.1%** Year 1/2 - **98.5%**

Year 3/4 - **97.6%** Year 5/6 - **97%**

Well done to **Reception** for having the highest attendance



## BIRTHDAYS!

### Birthdays from this week!

Happy Birthday to **Grace Keen** in Nursery!

Happy Birthday to **Jessica-Rose Hibbard** in Year 5!

Happy Birthday to **Sophia Watton-Hall** in Year 1!

★ **HAPPY BIRTHDAY!** ★

## Diner of the Week:

Nursery - Emily Zorn

KS1 - Freya O'Sullivan

KS2 - Archie Gibbons

### Champion Table

KS1 - Mexica - 12 points

KS2 - England - 10 points





## Nursery News

This week in Nursery, we have been learning to order numbers 1-10 and use every day language related to time. We are also looking at illustrations and print in books within the environment.

Our story of the week is 'Tiddler'. The children have enjoyed finger painting and playing in the shaving foam with sea animals, to explore different textures.

"Look you can make patterns in the rice with your finger"



Re-

minders

Please can you remember to complete and return your children's Rising 5 folders with reading books each week. The Rising 5 folders with letter sounds only need to be returned when the children have completed all sounds. This is necessary in order for us to change reading books over and add new sounds to their books.

Thank you for your continued support,  
Nursery Team

### Dates for your Diary

- Fri 29<sup>th</sup> June - Rising 5s Teddy Bears Picnic at 2:15pm
- Wed 4<sup>th</sup> July - Sports Day
- Tue 10<sup>th</sup> July - Rising 5s Reports parents evening/Summer Production.
- Wed 18<sup>th</sup> July - Nursery leavers celebration.
- Thursday 19<sup>th</sup> July- Last day of term.

## Dates for your diary 2017/2018

### June 2018

18th—Residential Trip

21st— Year 3/4 Swimming PM

25th—Patina making

26th—Patina morning

26th—Diocese Leavers Service in Crowborough at 1.15pm

27th—Patina all day

28th- British Athlete visit AM

28th—Year 5/6 Swimming PM

29th—Teddy Bears picnic at 2.15pm

29th— Y6 Safety in Action PM

### July 2018

4th — Sports Day at 9.30am & picnic at 12.00pm with parents

5th — Summer Production dress rehearsal at 2.00pm

10th—SATs results released at 7.30am

10th — Summer Production at 2.00pm and 6.30pm

13th — Reports out to parents

16th — Parent Consultations

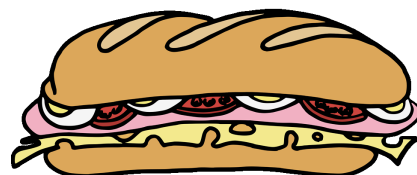
19th — Leavers Service at 9.30am

20th — INSET day



## Summer Menu

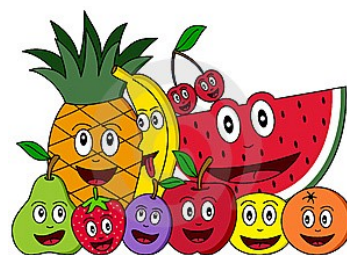
This term, there are baguettes available for the children at lunch time. They have a choice of ham, egg, tuna mayo and cheese.



## Clubs

If you would like your child to join Breakfast Club in Term 6, please complete the form and return to the office. Breakfast Club runs on Mon, Wed, Thu and Fri from 7:45am. Children have a choice of cereal, toast and fresh fruit.

Please note that in Term 6, clubs start in Week 2. Please return completed forms to the office.





**East Hoathly Church of England Primary School  
Breakfast Club Term Dates and Application Forms**

Early Birds Breakfast Club £5.00 (From 7:45 am)

**Term 6**

Child/Children's Names \_\_\_\_\_

Term Date	Monday	Tuesday	Wednesday	Thursday	Friday	Total €
						€

Please complete the above with a tick for all the days you would like to book for the term.  
If you need to change the session, it is possible however, you may do so only if the alternative is in the same week and prior notice is given.

**Payments must be made in advance by either:**  
**Cash**  
**Cheque (payable to East Hoathly CE Primary School)**  
**Childcare Vouchers**

Signed ..... Date .....



# School Clubs

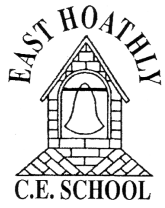


Please see below the list of After School Clubs that we are offering for Term 5.  
In-house clubs will start the week commencing **11th<sup>th</sup> June 2018**.

If you wish your child(ren) to apply for any of the clubs please complete the attached form(s) and return them to the office. More forms can be obtained from the office if needed.

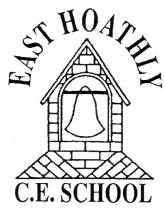
<u>Day</u>	<u>Club</u>	<u>Time</u>	<u>Adult</u>	<u>Total</u>	<u>Age</u>	<u>Cost</u>
Monday	Rugby Club (Starts <b>11th Jun</b> )	3:20 - 4:20pm	Heathfield & Waldron RFC School Rugby	15	All	£3 per session.
Tuesday	Multi Sports - lunch times (starts <b>12th Jun</b> )	12:30 - 1pm Lunchtime	Premier Sport - Mr Lawrence	20	All	No charge
Tuesday	Homework Club (starts <b>12th Jun</b> )	3:15 - 4:15pm	Miss Hillier	12	All	No charge
Wednesday	Multi Sports - after school (starts <b>13th Jun</b> )	3:15 - 4:15pm	Premier Sport - Mr Lawrence	20	All	No charge
Friday	French (Starts <b>15<sup>th</sup> Jun</b> )	3:15 - 4:15pm	Felicity Poirier	12	All	£94.00 for 12 sessions





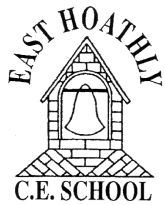
I would like my child.....  
to join the ..... club for Term 6  
Signed..... (Parent /Guardian)

.....



I would like my child.....  
to join the ..... club for Term 6  
Signed..... (Parent /Guardian)

.....



I would like my child.....  
to join the ..... club for Term 6  
Signed..... (Parent /Guardian)

.....



I would like my child.....  
to join the ..... club for Term 6  
Signed..... (Parent /Guardian)

.....