

Managing Stress

Stress is an uncomfortable experience of pressure or worry caused by problems in your life. Stress can cause many different symptoms and may affect how we feel physically, mentally, how we behave and make choices. It is not always easy to recognise when stress is the reason you are feeling or acting differently.

This guide will give you some top tips so that you can take action to reduce the symptoms of stress in your life.

1. WARNING SIGNS, PART 1



Warning signs of stress include emotional symptoms such as anxiety, fear or loss of confidence and cognitive symptoms such as poor concentration, poor memory or repetitive thoughts.



2. WARNING SIGNS, PART 2

Warning signs also include physical symptoms such as excessive sweating, racing heart rate, headaches and muscle tension. Behavioural symptoms might include, poor sleep, irritability, drinking excessive amounts of coffee or alcohol or losing your temper.



3. UNDERSTAND YOUR TRIGGERS

Take time to reflect on situations which may be causing stress. Once you know what they are, you can begin to reduce your exposure to the stressors and/or manage the causes.



10. PRIORITISE WELLBEING

As a way of preventing stress, you should prioritise your wellbeing and be consistent about it. A one-off activity will have some impact, but it won't help you manage stress or maintain wellbeing in the long term.

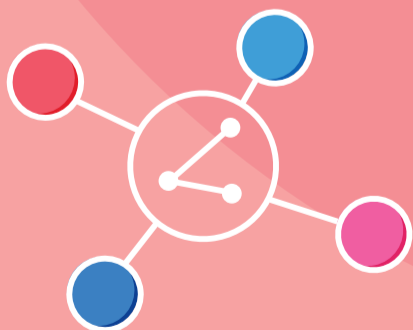
9. MANAGE YOUR TIME

Prioritising tasks, including emails and wellbeing activities, will be a crucial first step to change and taking control. Get someone to help you to keep on track with the change.



8. CHANGE YOUR PERSPECTIVE

Amend your thinking and expectations of what is possible or doable. Reduce the pressure on yourself by reframing the problem or accepting that not everything will be finished or perfect. Most of the time, good enough is ok.



7. USE YOUR SOCIAL NETWORK

Plan opportunities for fun and enjoyment with people you care about and who care about you. This could be sharing a new experience or an activity you enjoy doing together. Share and talk about your feelings too, sometimes that is all that is needed to cope.

5. MAKE HEALTHY CHOICES

Plan regular, healthy activities which will reduce stress symptoms. These will be a non-negotiable part of your week and a regular antidote to stress.

6. INDUCE CALM

Activities known to help induce calm range from deep breathing, meditation and mindfulness to walking, outdoor exercise or gardening.



The National College®

This guide is part of The National College staffroom poster series

A collection of information posters for your school staffroom.



Meet the Expert: Anna Bateman

Anna Bateman, subject matter expert on mental health & wellbeing and school improvement adviser

The National College | Remote video CPD to empower school leaders & teachers

www.thenationalcollege.co.uk Email: support@thenationalcollege.co.uk Twitter: @TheNatCollege Facebook: @thenationalcollegeuk

Users of this guide do so at their own discretion. No liability is entered into. Current as of the date of release: 11.02.2021