

ST MARY THE VIRGIN CEP SCHOOL NEWSLETTER

'Learning with love, strength and faith following the example of Jesus'



Dear St Mary's Families

Almost exactly two years since I first walked into this beautiful little school, it is time for me to say goodbye.

Thank you for everything you do to make this place so special - it is due to each of you as staff, families, friends and the wider community that St Mary's is the place it is. A place that aims to put children first, that cares for their well being and works to nurture caring, kind and compassionate young people, who will stand up for what is right, believe in themselves and know they can make a difference. It barely needs to be said that I will miss you all enormously.

St Mary's is a wonderful school, full of wonderful people and I feel very lucky to have been a part of it. Thank you for your kind words, cards and gifts, they do mean a lot to us.

And finally, have an AMAZING Christmas.

Kind regards,

Mrs F Taylor
Head of School





Katrina's Corner

As many of you are aware, this will be my last piece for the newsletter as I am leaving St Mary's Church in the new year. I am taking up a post as Associate Minister for a Church in Nottingham and so we are on the move over the next week. Alex, Lucy and I would like to thank everyone for the love, care and support we have each been shown as part of the St Mary's family over the past 2 and a half years - we will miss you all!

Katrina

PTFA News

Don't forget that we have a Jumble Sale coming up in the New Year on Saturday 26th January between 11am and 12pm. Donations gratefully received from Friday 25th January and placed under the stairs to the front of the school office. Also our School Disco on Friday 8th February, after school and in the school hall. More details coming in Term 3.

Thank you. The PTFA x



Red Butler Music School Assembly

Last Thursday, we were treated to a Music Assembly by James, Charlie from Red Butler Music School and all the children currently taking lessons for Ukulele, Guitar and Electric Drums. It was amazing to see how much the children have learnt in just two terms and we are looking forward to the next assembly at Easter.

If you are interested in booking a taster session for next term or further details, please see the advert attached.



events 2019

Supporting well-being workshop

with Judy Perraton, ESCC Schools Mental Health and Wellbeing Advisor

This workshop with Judy Perraton, ESCC Schools and Colleges Mental Health and Emotional Wellbeing Adviser, will explore:

- practical strategies for maintaining personal wellbeing
- tips for dealing with emotional distress (yours/your child's)
- information on local resources and support

Judy will also discuss the local developments supporting children and young people's mental health in schools and colleges and outline the Mental Health and emotional wellbeing work she is doing with schools across the county.

CLASS+ 1:1 Clinic
Alongside the talk CLASS+ will be running a 1:1 clinic to discuss any issues you may need help or advice on, to book a clinic slot please email info@icontactautism.org (to book tickets for the talk see link below)

Thursday 10th January

The Phoenix Centre
26 Malling St. Lewes, BN7 2RD

7pm - 9pm

To book a place on one of the above events visit: www.tickettailor.com/events/icontact

GIVE THE GIFT OF MUSIC THIS CHRISTMAS

MUSIC LESSONS WITH RBMS MUSIC

- First Lesson FREE
- What you want to learn
- Great practice tools

IN RBMS MUSIC LESSONS WE LOOK AT FUN MODERN SONGS AND QUICKLY LEARN HOW TO PLAY IN SMALL GROUPS OF 3-5. ALONG THE WAY WE INTEGRATE WITH OTHER RBMS TUTORS WHO BRING IN AN EXCITING COLLECTION OF INSTRUMENTS TO TEST OUT AND PLAY ALONG WITH. WE HAVE A LIMITED NUMBER OF SPACES AVAILABLE SO PLEASE DON'T HESITATE TO GET IN TOUCH!

Lessons are only £6/8 for 30 minutes
Direct Debit (£20/23 a month) or Bacs (Price varies by instrument)

Adult lessons also available, don't forget to check out our Christmas vouchers!

Across East Sussex schools we teach:

- Guitar
- Drums
- Ukulele

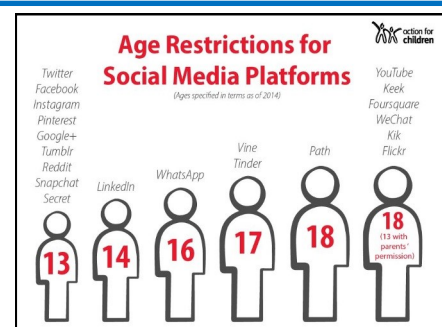
Sign up here - WWW.RBMSMUSIC.COM/JOIN
01273 885666
OFFICE@RBMSMUSIC.COM



Further to our email this week, please find enclosed details of the age restrictions for various social media platforms. Further useful information can be found via:

<https://www.nspcc.org.uk>

<https://www.internetmatters.org/advice/6-10/>



This Week's Pals Assembly

In our final PALS (Progress and Learning Assembly) the children shared their books with others in the school to talk about the progress and learning they have made during this half term.



The children also celebrated the fact that the School has achieved the certificate of a SILVER ECO SCHOOL. The Wildlife explorers club, along with Mr and Mrs Rowberry, have worked really hard towards this award...next step GREEN FLAG!



Mrs Taylor also presented some gifts for the library....a whole set of HARRY POTTER books and a complete CHESS set. Thank you for the gifts, the children are already excited about using them!

Well done, St Mary's, for all of the achievements and progress you have made this term!

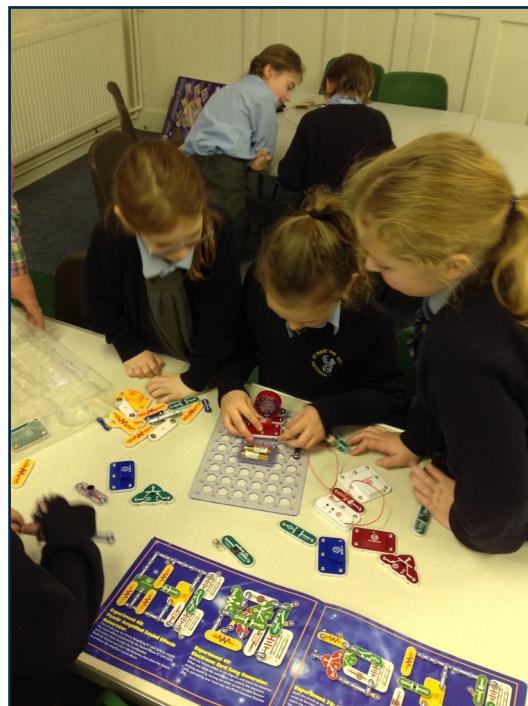


Willow - Engineering Day

On Thursday 6th December, Willow class spent the morning being Engineers! Mr Martin-Lawrence came in, bringing with him a robot and lots of other fantastic electronic activities for the children to have a go at! To start the morning, he spoke with all the children about his job and how he got interested in engineering which definitely seemed to resonate with some of the children.

The children then spent the morning rotating around a variety of different activities. They used ipads to programme a robot to follow different commands and had great fun watching it spin its way around Larch! They also had a go at making different elements work by clipping different parts of a circuit together to make a lamp light up or a rotor spin. Whilst they weren't busy doing that, they were trying their hand at programming using scratch and another Minecraft themed game on the laptops. This definitely tested their patience, perseverance and team work!

What a fab way to finish off a term's worth of learning about engineering! A huge thank you to Mr Martin-Lawrence for spending his morning with us - the children (and adults!) hugely enjoyed themselves and learnt a lot.





Maple's Christmas Party in the Church—13th December 2018

Katrina organised a party at the church as a celebration of Jesus's birthday.

The children talked about what you need for a celebration.

" a cake". – Jacob

" decorations.... you have some there and there is a sign" –Isabella

"There are balloons, they are for a party"- Emily

The children helped telling the Nativity story. They discussed the long journey and how Joseph helped Mary. They then sang some songs with actions about the star

"The star is like a diamond in the sky" - Isabella

Then the children pretended to be the animals in the story which they had acted in the Nativity play. Then they all had a party blower and a hat to have a celebration in the classroom afterwards.

We would like to say a huge Thank you to Katrina for our party and all of the fantastic learning activities she has provided over the years with Maple Class.

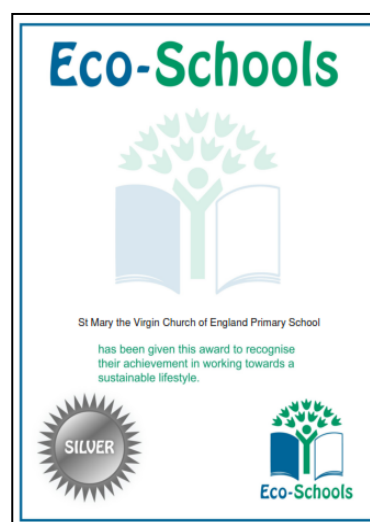




Wildlife Explorers & Eco Club—Mr and Mrs Rowberry

Great news - St Mary's Wildlife Explorers and Eco-Committee have earned our school not just one top award but two! We have been awarded the Silver Award for Eco-schools and a Gold Award for completing all our school's wildlife challenges.

What amazing Christmas presents!



And the SMV Explorers wish to remind you of Wealden' Council's Christmas Environmental advice:

Wealden residents will be able to recycle even more than usual over the Christmas period, as part of the new services being delivered through Wealden District Council's waste service.

For the first time residents of Wealden will be able to recycle Christmas cards and wrapping paper as part of their regular recycling collections, and this is the first Christmas that Wealden crews will collect glass and plastic food packaging from residents doorsteps.



Sports Awards – Mr Dolton

Well done to the following children:

W/e 7th December 2018

Maple: Pablo for remembering all of the actions for the Christmas game and winning it.

Cherry: Braxton for performing brilliantly during the Christmas game.

Willow: Lucy for an excellent gymnastic sequence demonstrating creativity and excellent linking.

Lilac: Ellen, Elodie and Delia for outstanding gymnastic sequences, simply brilliant!



Pioneer Federation News Update

Mince Pie Run

A big well done to Mr Procter and Mrs Fry for completing the Mince Pie Run last Sunday.

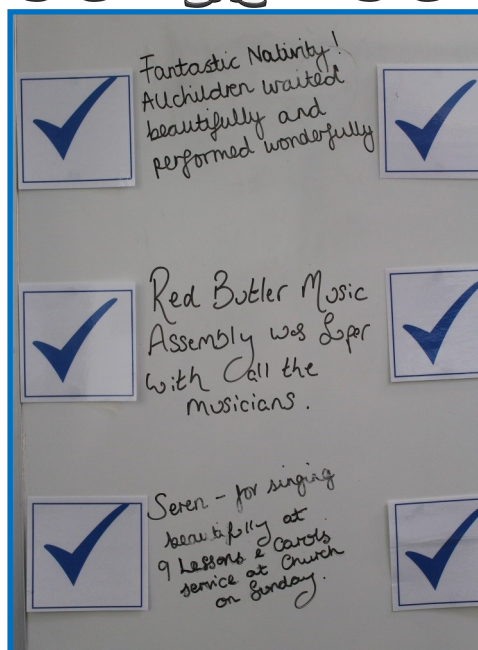
All the money they have raised will be going towards new equipment for the Pioneer Federation schools.



Positivity Board

This board enables parents/ carers, staff, children and visitors to write positive comments, or thoughts, about their time in school or during events that they would like to share with others.

Please pop in any time to write down something that you would like to share. In the newsletter every week, there will be a picture to share and celebrate the positivity within our school and community. As always, thank you for your support!



Power Learners of the Week & Attendance

LEARNERS W/E:

MAPLE:

CHERRY:

WILLOW:

LILAC:

14TH DECEMBER:

ZACHARY

ISLA

ALEX

ELOUISE

ATTENDANCE:

MAPLE: 96.8%

CHERRY: 95.9%

WILLOW: 97.1%

LILAC: 97.1%

TOTAL: 96.7%

Who's Who At St Mary's..... Merry Christmas From Us All!



Diary Dates (subject to changes and additions)

Sunday 23rd December

Special Joint Service at 10am at St Mary's with a thank you to Katrina and her family

Monday 24th December

Crib Service at St Mary's at 4pm
Midnight Communion at 11.15pm

Christmas Day Church Services:

9.30am Family Communion at St Mary's and 11am at Holy Trinity Colemans Hatch

3rd and 4th January 2019 are Inset Days

Back to School 7th January

Thursday 10th January

Open Afternoon for Reception 2019
1.30pm to 2.30pm

Thursday 17th January

Maple at Forest School

Wednesday 23rd January

Maple Class Trip to Groombridge

Saturday 26th January

PTFA Jumble Sale, 11am to 12pm

Thursday 24th January

Cherry at Forest School

Thursday 31st January

Willow at Forest School

Monday 4th February

Full Governing Body Meeting, 6pm—8pm

Thursday 7th February

Lilac at Forest School

Thursday 7th February

Parent Forum, 2.45pm to 3.15pm

Friday 8th February

School Disco - times to be confirmed

Thursday 14th February

Maple at Forest School

Thursday 14th and Friday 15th February

Willow Bake Sale After School

Half Term

Monday 18th February to Friday 22nd February



PTFA Events:

Jumble Sale

26th January 2019

11am to 12pm

Chinese New Year Disco

Friday 8th February 2019

After school and in the school hall



Bake Sale Dates:

Willow - Thurs 14 / Fri 15 February

Lilac - Thurs 4 / Fri 5 April

Maple - Thurs 11 / Fri 12 July