

ST MARY THE VIRGIN CEP SCHOOL NEWSLETTER

'Learning with love, strength and faith following the example of Jesus'



Dear St Mary's Families

It has been great to meet with you all this week during parent consultations. All the teachers have enjoyed updating you on the children's fantastic progress and hard work throughout the year so far. If you haven't managed to meet your child's teacher yet, please make an appointment through the school office.

Last week, we enjoyed showing off our new vision song to parents that came to our Vision and Values launch assembly and spent the morning focused on our new vision and learning more about the values of Love, Strength and Faith, following the example of Jesus. The new display in the hall is looking beautiful with some of the work the children created.

It was lovely to have an extra assembly on Wednesday and hear the Red Butler musicians showing off their skills. What a huge achievement and fantastic progress since the last assembly in Term 2. Well done to all the children - we are very proud of you! Keep an eye out in the newsletter for the date of the next music assembly at the end of the year.

We are looking forward to having this term's 'University of Life' in school in a couple of weeks, as the last one was spent exploring the Ashdown Forest! If you have any skills or would like to share a hobby with the children as part of this, please let Miss Banks or Miss Hare know as we would love to have you! It is on **Tuesday 2nd April from 10:50 until 12:00.**

We are looking forward to another busy couple of weeks at St Mary's before we break up for Easter, so please check your emails and your child(ren)'s book bags for information about trips, services, class assemblies and sporting events so you don't miss anything.

In light of recent events, our thoughts are with our partner school in Malawi. Miss Banks has made contact with them and will keep the children updated, as and when we hear anything.

Thank you for your support.

Kind regards,

James Procter
Executive Headteacher

Vicky Lewis
Head of School

Becca Hare
Assistant Headteacher

Abbie Banks
Senior Teacher





St Mary's Church. Heart for the Community Project.



Easter Church Services 2019

Dear St Mary's Families,

We would like to invite you all to attend the 'Service of Thanksgiving and Dedication' for our new facilities on Sunday 31st March at 9.30am.

It would be lovely to see as many people as possible at the service and we look forward to welcoming you to St Mary's. It has been wonderful to welcome St Mary's school back into church for their time of Collective Worship. We now have new heating, a toilet, sound and running water!

We are also looking forward to welcoming Bishop Richard Jackson, who will be conducting the service and dedicating the new building work.

As it is also Mothering Sunday, there will be flowers and crafts for all our young people.

We hope for a full church. Everyone welcome. Coffee and cake afterwards.

With best wishes,
Rev Julie



Rev'd Julie Sear
Rector, St Mary's Church Hartfield and
Coleman's Hatch
01892 770436

www.hartfieldchurch.org



Forest School Thursday 28th March

Please be aware that the road to Forest School is closed next week, so we will be staying local. Please can Cherry parents collect from school at the usual time of 3.15pm.

Date	Times	Church	Service
7 th April	9.30am 11am 6.30pm	St Mary's Holy Trinity Holy Trinity	Holy Communion Sunday Praise Choral Evensong
<i>Passiontide Begins</i>			
14 th April	8am 9.30am 11am	St Mary's St Mary's Holy Trinity	Holy Communion BCP Church Family Praise Holy Communion
<i>Palm Sunday</i>			
18 th April	7pm	St Mary's	Joint Service
<i>Maunday Thursday</i>			
19 th April	10am 2pm	St Mary's Holy Trinity	All age stations of the cross Meditations at the foot of the cross
<i>Good Friday</i>			
21 st April			Sunrise Service On The Forest Time To Be Confirmed
<i>Easter Day</i>			
21 st April	8am 9.30am 11am	St Mary's St Mary's Holy Trinity	Holy Communion Holy Communion Holy Communion
<i>Easter Sunday</i>			

Parent Questionnaire



Please look out for a questionnaire in your book bag today. We would appreciate it if you could complete and return it by next Friday. Thank you.

Comic Relief Day 2019

Thank you so much to all our parents and children for supporting Red Nose Day last week, raising £85.00 in total!



Sports Day is back to Friday 7th June 2019

Just a gentle reminder again that Sports Day will take place on Friday 7th June, followed by the PTFA Summer Social.

Supporting our local



We were recently contacted by the Hospice in the Weald, to see if we could help them with some of their fundraising. Some of you will have seen the very cute hand knitted chicks outside the front school office, containing a chocolate surprise and for a suggested donation of £2.00. Please pop by if you would like to purchase one or two...





Aztec Threads, who are just down the road in Bassets Manor, have been in contact to see if they can help the school and we are hoping to see them at our next University of Life day in April. They have an open day and Spring Clearance tomorrow 23rd March between 10am and 3pm: Unit 3 Bassetts Manor, Butcherfield Lane, Hartfield. In addition to this and for any budding sewers, Aztec will be donating a small commission back to school for every sewing machine brought in for a service. www.aztecthreads.com




At our recent Parent Forum, we received some feedback that some parents are struggling with ParentPay.

If you are having problems, please contact the school office to arrange a time when we can talk about how we can help you with this. Next week, a new page will be added to the school website with a series of guidelines to assist parents navigate the website and hopefully ease any difficulties.


Whilst we appreciate that for some of our parents using ParentPay is not always convenient, Chartwells are now no longer accepting cash. As the school does not have a depositing facility, no local post office, or bank, we would prefer to use ParentPay for most school trip payments. Please talk to the school office in confidence if you have any queries or concerns.





AXON CHESS ACADEMY

in conjunction with
St Mary The Virgin C.E. Primary School



During the Summer term we will be looking to commence the

ST MARY PRIMARY SCHOOL CHESS ACADEMY

The Academy is open to all children, whether established player or complete beginner.
The coaching sessions will be either before school or after school depending upon the preference.

Chess is fantastic to develop different mental skills including reasoning, logic, forward planning, and overlaps into other subject areas especially maths.

Throughout the year there will be a mix of coaching and playing sessions, with the aim of entering a St Mary Primary Chess Academy team
in the
Delancey UK National Schools Chess Challenge



Our coaching follows the British Chess Institute syllabus, and leads to the award of the British Chess Institute Certificates of Chess Excellence which are presented at the end of each term commencing with level 1.

The cost is £50 for the 10 chess sessions in the Summer term, starting during the week commencing on the 29th April 2019

Places are limited to 20 children so contact the school office to book a provisional place for your child.

You will be contacted before the end of the Spring term to make payment to confirm your provisional place.

If you have any questions as regards chess and your child, please contact us:
axonchessacademy@gmail.com





Wildlife Explorers & Eco Club—Mr and Mrs Rowberry



Wildlife Explorers have been planting and tidying our school growing spaces.

In the memorial garden, explorers have had a tidy up and then planted lots of spring flowers to bring more colour to the flower beds (and food for early insects).



In the vegetable raised bed near the playground, we planted onions and potatoes and hope there is a good crop to eat in the summer.

It is great to show how St Mary's is helping our environment and getting ready for our eco-school assessment!



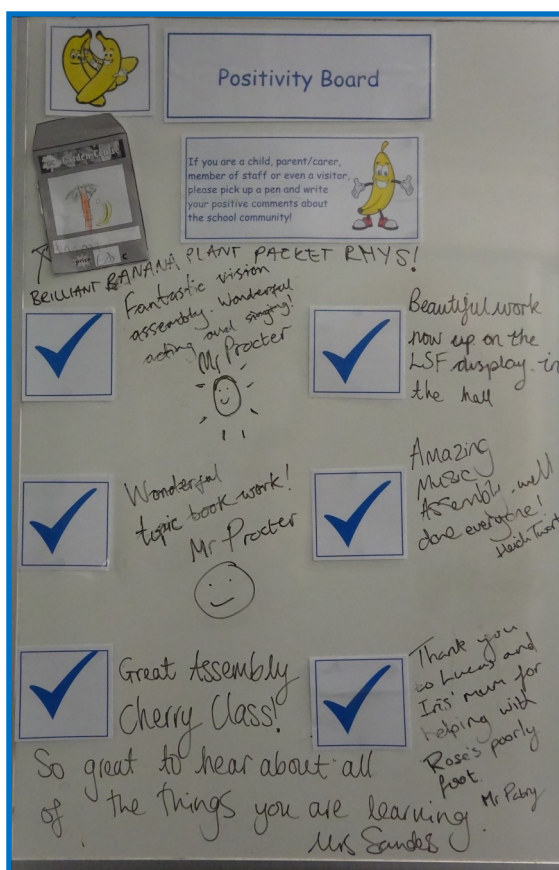
Sports Awards – Mr Dolton

Well done to the following children, who have received certificates today explaining why they won their award.

	w/e 8th Mar	w/e 15th
Maple	Zachary	Scarlett
Cherry	Kaya	Harry W
Willow	Harvey	Edward
Lilac	Francesca	n/a



Pioneer Federation News Update



Positivity Board

This board enables parents/carers, staff, children and visitors to write positive comments, or thoughts, about their time in school or during events that they would like to share with others.

Please pop in any time to write down something that you would like to share.

In the newsletter every fortnight, there will be a picture to share and celebrate the positivity within our school and community.

As always, thank you for your support!



Head Teachers' Award

Leon for his fantastic progress in his reading.

Ellie, Seren, Clover, Lily, and Angelina for fantastic progress in Maths SATs, with Angelina nearly doubling her scores.

Hope for amazing progress in writing

Grace for progress in handwriting and stamina for writing.

Power Learners of the Week & Attendance

LEARNERS W/E: 15TH MAR			ATTENDANCE W/E: 15TH MAR		
	22ND MAR		18TH MAR		
MAPLE:	LOGAN	HENRY	MAPLE:	97.5%	94.7%
CHERRY:	ANNA	ESRA	CHERRY:	94.8%	95.0%
WILLOW:	ZARA	MILLY	WILLOW:	97.8%	96.1%
LILAC:	GABRIEL	ZIGGY	LILAC:	96.7%	95.8%



Thank you to our class reps and parents for attending the recent Parent Forum, please find enclosed notes from the session:

Parent Forum: 14th March 2019	
Online Safety	Unfortunately our visiting speaker had to cancel. Miss Lewis shared the information that the visitor would have gone through at the parent forum and a link is enclosed. If any parents would like hard copies in book bags, please contact Mrs Tufo via the school office.
Website	There is a wealth of information on the website for parents to utilise, including copies of letters that have recently been sent out. Class reps have been asked to encourage parents to use it as a point of reference.
Class Rep Feedback:	
Library Use	Parent feedback including considering ways to open the library to the children more. Miss Lewis will take this idea to the next staff meeting for consideration.
Daily Mile	Could this or something similar be introduced? Miss Lewis to liaise with Mr Dolton and teaching staff
Slippers at school	This has been encouraged at other settings due to the idea that comfort leads to better concentration. Miss Lewis explained that this would cause many logistical problems and many shoes/slippers would end up getting lost so not possible at present.
Mindfulness	Could scents be used to create mindful environments? Could early morning Yoga/Tai Chi be reinstated? Miss Lewis explained that consideration for similar ideas has been on-going following a visit to another school and discussions about how to incorporate mindfulness areas around the school are taking place.
Parent Pay	Some parents are unable to access this. Mrs Tufo will be sending out some helpful notes shortly.
Transition	Some Maple class parents are concerned about the transition into Cherry class. Miss Lewis explained that formal transition sessions are planned in and that informal sessions would also take place. Miss Lewis also explained that the benefit of a small school is that all children are known to all staff already so transition is smooth.



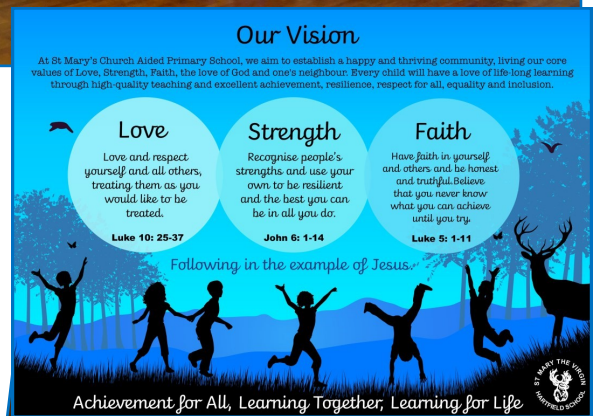
<https://www.nspcc.org.uk/preventing-abuse/keeping-children-safe/online-safety/>

For advice and support on setting up parental controls, adjusting privacy settings, understanding social networks and more, visit [nspcc.org.uk/onlinesafety](https://www.nspcc.org.uk/onlinesafety) or call 0808 800 5002

This Week's St Mary's Photo Album



From top left clockwise:
Maple Class Assembly, Red Nose Day, New School Vision Launch and Pause Morning, Red Butler Music School Assembly.



Diary Dates (may be subject to changes and additions)

Tuesday 26th March

Malawi Breakfast

Wednesday 27th March

Maple and Willow School trip to Drusillas

Thursday 28th March

Lilac Assembly at 9am - Parents invited
Cherry at Forest School

Friday 29th March - change of date!!

'Bring an adult' - moved to 16th July - one only.

Tuesday 2nd April

University of Life, 10.50am to 12pm

Wednesday 3rd April

Easter Service at 2.30pm with parents invited

Thursday 4th April

Willow Assembly at 9.00am - parents invited

Thursday 4th April

Parent Forum - time tbc

Thursday 4th and Friday 5th April

Lilac PTFA Bake Sale

Easter Holiday

Monday 8th April to Monday 22nd April

First day back at school - Tuesday 23rd April

Monday 29th April

Cherry Class trip to British Wildlife Centre

Wednesday 24th April

Willow weekly swimming begins



New Dates for your diary:

Wednesday 1st May

Maple trip to Briars and Pooh Bridge

Tuesday 7th May

Class Photos with Tempest Photography

Week beginning 13th May

KS2 Sats Week & Y5 Bikeability

Friday 24th May

May Festival

Friday 7th June

Sports Day and PTFA Social

Tuesday 18th June

New Reception Parent Evening

Week beginning 24th June

Lilac Residential Trip

Tuesday 9th July

Red Butler Music Assembly for Parents



All Age Stations Of The Cross
Good Friday at 10am
St Mary's Church, Hartfield

Thought provoking crafts, making
of Easter garden, music.
Suitable for children and adults
of all ages.
Refreshments afterwards.

If you need the newsletter or other school letters to be in a different format, please speak to Mrs Tufo in the school office. If you need help or support with access to any information, please also contact Mrs Tufo.