



## St Mary the Virgin Church of England Primary School

Hartfield East Sussex TN7 4AA

Executive Headteacher: Mr James Procter

Head of School: Miss Becca Hare

Email: [office@st-maryhartfield.e-sussex.sch.uk](mailto:office@st-maryhartfield.e-sussex.sch.uk)



**Term 3 Week 3**

**Friday 24th January**

### Attendance

Whole school: **96.96%**

Maple: **97.14%** Cherry: **97.69%**

Willow: **99.23%** Lilac: **93.85%**

**Less than 94.9% - Red** **95 to 96.4% - Amber**

**96.5 to 99.9% - Green** **100% - Gold**



### Learning Powers Certificate

On **Friday 31st January 2020**, at our Celebration Assembly at **9:30am**, the following children will celebrate their achievements:

**Maple:** Elodie **Cherry:** Joshua

**Willow:** Evelyn **Lilac:** Hope

Please come along if you are free!



### Top Tips for next Week!

- We still need some club forms and 'going home consents' completed - please check in book bags!
- Tuesday 28th January:** Willow swimming.
- Thursday 30th January:** Willow Forest School
- Minutes of SMW Parent Forum attached
- There is a new East Sussex Parent Carer Forum - details at the end of this Newsletter

**Please read the newsletter for further information and check bags for letters that have been sent home this week.**

### British Citizen Award

This week's British citizen award goes to **Leon** for volunteering to play with somebody who was looking a little bit lonely and for being kind to his friends.



### Sports Award

Mr D 's nominated Sports Stars for this week:

**Fran:** for demonstrating excellent control and fluency during creative sequencing!

**Josh:** who has worked really hard to improve his technique whilst rolling in gymnastics!

**Riley:** who has shown excellent effort during the 10minute challenge!

**Eva:** for beautiful sequences during gymnastics, demonstrating excellent fluency and control!



### Reading Reward Scheme

Thank you for your ongoing support in totting up the minutes read at home, and the additional comments you make.

Reading Records are checked weekly in school by the class teacher or teaching assistant and minutes are counted for the class total.

This week's results for our Reward Scheme:

**Maple:** 906 minutes **Cherry:** 618 minutes

**Willow:** **1849 minutes** **Lilac:** 739 minutes

Well done Willow, and, thank you for your continued support.

If you need the newsletter or any other school letter to be in a different format, please speak with Mrs Funnell in the school office.

If you need help or support with access to any information, please also contact Mrs Funnell.

## **Recommended Reads - We Love Reading!**

At St Mary the Virgin CEP school, we believe that reading should be enjoyed by everybody and that children (and adults) should have opportunities to lose themselves in a great book.

In order to expand our reading experiences, we are asking staff, children, parents and friends of the school to send in 'recommended reads' for us to explore.

We would like to know the following information:

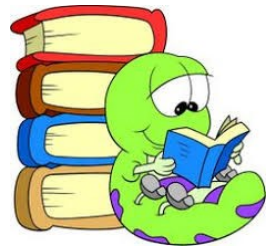
- the name of the book
- the author (and illustrator if applicable)
- recommended age group
- why you recommend the book

To get us started there is a map, (like the London Underground) attached to the back of this newsletter, to help you to think of alternative texts and authors that you and your child might like to explore. The map shows a popular author on each line, and along each line are lots of examples of similar-style texts that are likely to appeal to readers of that author.

Please send your recommendations to the school office (there is a template attached if you would like to use it) and we will share one or two each week in the newsletter and it will then go onto our school website so that you can look back at all the recommendations.



Each term, we will purchase some of the recommended reads for the school library and we look forward to hearing all about the books you have been enjoying!



## **Recommended Reads!**

My name is.....

The book I am recommending is .....

By .....

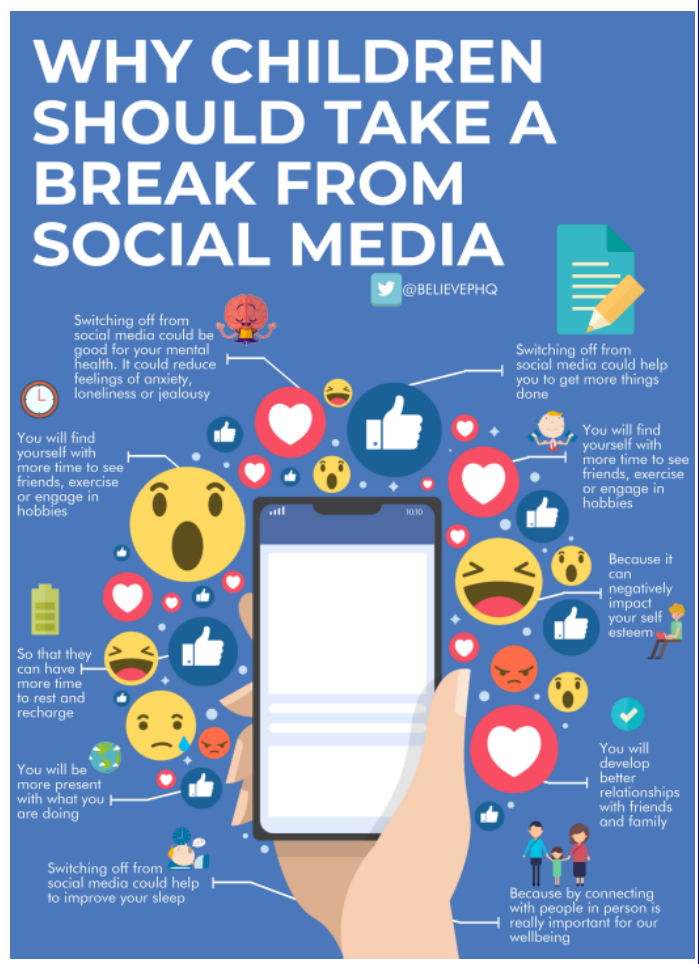
This book is suitable for age (please circle)

*Under 4s 4-5 6-7 8-9 10-11 12+ everybody*

I recommend this book because

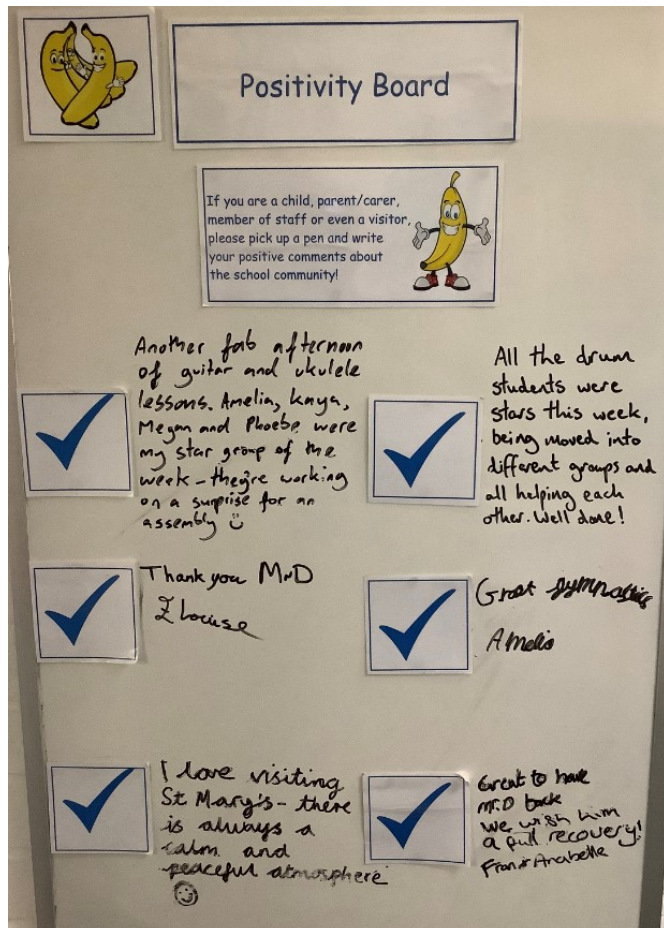
## Well Being Poster

This week's poster gives lots of reasons why children should take a break from social media!



## Positivity Board

This board enables parents, carers, staff, children and visitors to write positive comments, or thoughts, about their time in school or during events, that they would like to share with others. Please pop in any time to write down something that you would like to share. In the newsletter every week, there will be a picture to share and celebrate the positivity within our school.



### Dates for your diary

*All dates are available on school website, but please see below for Term 3*

#### **January**

28th - Willow Swimming  
28th - Chinese New Year Menu Change (attached)  
29th - 9:20am Collective Worship - church  
30th - Willow Forest School  
30th - Church Street Community Café 2:30-4:30

#### **February**

4th - Willow Swimming  
6th - Lilac Forest School  
6th - Full Governors Board meeting  
6th - Church Street Community Café 2:30-4:30  
11th - Willow Swimming  
11th - Lilac - RSE Parents' Meeting  
12th - International Day 2:45pm Assembly to share learning with parents  
13th - Lilac Bake Sale  
14th - Lilac Bake Sale  
14th - Last Day of Term 3

### Benny

Benny has been working hard this week helping the children learn social skills!

To keep things equal, he has also received some training himself, from the children and here he is, taking a well earned rest!



A rota has been drawn up for children to walk with Benny and we will ask if you would ensure that wellies are in school on these days. Thank you.

## St Mary's



### Dates for your Diary

13th/14th February - Lilac Bake sale  
28th February - School Disco 3.30pm - 5pm  
2nd/3rd April - Cherry Bake Sale  
16th/17th July - Maple Bake Sale

### Rocking Horse and St Mary the Virgin Hartfield

As you will be aware, there is a clothing bank on the school site for collection of unwanted clothing, shoes, accessories and Bric-a-Brac for the Rocking Horse Children's Charity. For all of the **clothing** you donate to this bank, additional funding is also gained by the school.

### Co-op Local Community Fund - Hartfield school PTFA

Until 24th October 2020, our school PTFA has been chosen to be one of Co-op's local community fund recipients (meaning 1% of the value of own brand goods and all money from single use shopping bags will be donated to the school). Please sign up, spread the word and encourage support!

### Jumble Sale

**Saturday 25th Jan**

**11am - 12noon** is

our annual jumble

sale, please can you bring all donated items of toys, books, DVD, clothes and bric a brac to school on Friday 24th January. If you have a child at Mr D's club and can spare even 30 minutes to help bring the jumble up and put out on the tables, that would be great.

We still need cake donations, and some helpers on the day between 11am and 12noon.

Any help would be greatly appreciated, please contact your class rep or Frances

[fm.brunsdon@gmail.com](mailto:fm.brunsdon@gmail.com). Thank you. 😊





**Maple Class** had an extremely exciting field trip last week. Inspired by our topic, Off We Go!, we visited Forest Row Fire Station. We



were welcomed by two wonderfully hospitable firemen who showed us the outfits they wear and told us how quickly they had to put them on. The children had a chance to experiment with the hoses and to climb into the fire engine. They were also able to look at the special camera the firemen use to detect body heat, when the visibility is really poor in murky water or in burning buildings. One highlight was hearing about an emergency the firemen had been called out to the night before, involving a burning car!



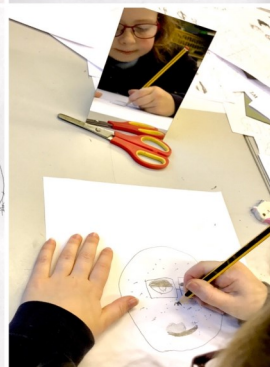
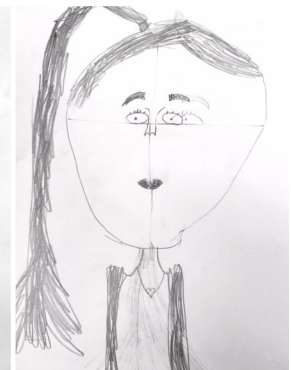
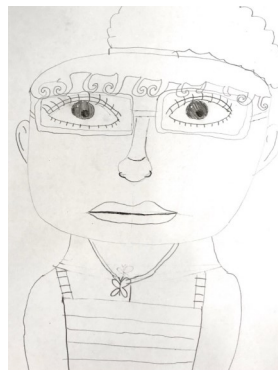
Our trip back to school was equally exciting, as we took the 291 bus from Forest Row to Hartfield, riding on the top deck of a double decker. The children were eager to share details of other bus journeys they had taken and it has generated lots of interesting discussions and writing opportunities.

**IMPACT & KNOWLEDGE GAINED:** The trip allowed the children to see different types of transport at work and what they are used for. It gave the children a greater understanding behind the designs of different transport how they help people at work and in their daily life.



## **Artytime**

Last week in Artytime the children learnt about portrait drawing and drew pencil portraits from life and photographs as well as self portraits. A big thanks to Abbey (Bethan's mum) for sitting for us, can you spot her in the drawings?



# Gymnastics Workshops



It was great to have Abi and Lydia from Fun Abounds come in and run a gymnastics workshop with each class on Thursday! They taught the children a bit about each of the gymnastics disciplines and taught them some of the stretches and exercises involved with each one. They showed the children some amazing clips of athletes at various Olympics events, which were really inspiring for all to watch. What an fantastic way to get involved with a sport that many maybe haven't experienced before!

*We have been asked for more information about who provided these sessions - please see below!*

**FUN ABOUNDS  
TRAMPOLINE  
CENTRE**

**Trampolining  
Classes**

**Gymnastics  
Classes**

**Birthday  
Parties**

**All  
ages!**

**All  
abilities!**

**All  
week long!**

**Visit our website for more information!**  
[www.funabounds.co.uk](http://www.funabounds.co.uk)  
01825 768479  
21 Bell Ln,  
Uckfield, TN22 1QL  
Fun Abounds Trampoline centre is run by the registered charity no: 1152878

St Mary the Virgin Church of England Primary School, Hartfield, East Sussex, TN7 4AA

Tel: 01892 770221 Email: [office@st-maryhartfield.e-sussex.sch.uk](mailto:office@st-maryhartfield.e-sussex.sch.uk) Website: [www.pioneerfederation.co.uk](http://www.pioneerfederation.co.uk)



## Art Day!

On Friday 24<sup>th</sup> January, St Mary's enjoyed a whole day of art. The children had four different sessions of art teaching them different art skills. They learnt mono-printing, 3-D art and splatter painting, how to draw a portrait of a friend, and watercolours. This was a great opportunity for the children to immerse themselves in one subject for the whole day. A local artist Sue Holpin led the session for portraiture and the parents had the opportunity to buy her art. It was fantastic that the children were able to learn new things from professional artists and express themselves in different ways. Thank you to all the staff who volunteered to lead the sessions; Miss Munn, Mrs Waterman and Mrs Carpenter!

**IMPACT & KNOWLEDGE GAINED:** The impact on the children's learning was that they consolidated and gained art skills in areas that they had not experimented with before. The day allowed KS1 children to develop a wide range of art and design techniques in using colour, pattern, texture, line, shape, form and space and gave our KS2 pupils the opportunity to improve their mastery of art and design techniques, including drawing and painting.



**Parent Forum**  
**St Mary the Virgin CEP School, Hartfield**  
**Monday 20<sup>th</sup> January 2020**



Notes:

**Website**

Our school website has been updated over the last few months with the aim of making it increasingly accessible and informative.

When you first access the website, you come to the Pioneer Federation site which holds information that is common to all three Federation Schools.

From here you can access the individual schools and on the SMV site we have aimed to identify key features of what parents may like to know in an easily accessible format. With all things, the website can always improve further so please let us know your views.

One area raised: it was difficult to locate the Nativity songs to practice at home – this year we will look at sending an email home with a hyperlink to make this more direct.

**Newsletters**

Following feedback received at the last Parent Forum, we have looked at changing the Newsletter format. Each week there will now be a 'top tips' box on the front page which will include all dates/basic details of events/activities for the coming week. There were comments made about the length of the Newsletter, which we will try to reduce but we feel it is important to continue to share school news and hopefully the top tips will help guide you to where you want to be!

**ParentMail**

This is now accessible! All being well you will each have received this Newsletter via the ParentMail system. Please chat to each other and let the school office know if anyone did not receive this email.

**Future Parent Forums**

The timings for the upcoming Parent Forums are going to alternate between morning and afternoon sessions towards ensuring more parents are able to attend.

Subject leaders from across the Federation are going to be invited to speak with parents in more detail about the curriculum and how it is planned – the behind the scenes thinking that links the development of learning across the age ranges and activities – from lesson planning to related school trips.

Dates and Topics will be advertised in the school Newsletter closer to the time.





## St Mary the Virgin Church

### Church Street Café

Church Street Community Café was launched last Thursday. The church looked fabulous with bunting, matching cloths, flowers and great homemade cakes. It was great to see Miss Hare and Mr Proctor enjoying a piece of home made cake and coffee. We would love to see you either before pick up or after pick up. There are activities for the children, lots of cake and a healthy eating bowl.

Come and catch up with friends and enjoy being part of the Hartfield Community. All donations are being split between the upkeep of St Mary's and local charities. Our main aim is to bring all ages of our community together. Thank you to those of you who came last week. Please find below information with all the dates up until August. Hope to see you soon. Reverend Julie



We look forward to seeing you there

Fantastic it's...

KS1 Free  
KS2 £2.05

28/01/20

# Chinese New Year

Choose a Main Meal...

Sweet & Sour Chicken with Rice  
Chinese Veggie Noodles  
Jacket Potato with Cheese or Baked Beans

On the Side...

Wok Tossed Vegetables  
Sweetcorn

For Dessert...

Fruit & Yoghurt Pot



Please speak to reception to sign up today!

Don't forget! If your child is in Reception, Years 1 or 2, then you can get their packed lunch or hot meal free of charge!

  
Chartwells  
EAT LEARN LIVE

## **East Sussex Parent Carer Forum**

The newly formed East Sussex Parent Carer Forum is now providing the voice at strategic level for the parent carers of East Sussex.

The Department for Education funds parent carer forums, via local authorities, to ensure parent carer voices are heard. In November 2019, two East Sussex support groups, iContact and ImPact were successful in their “expression of interest” to jointly form the East Sussex Parent Carer Forum.



This is an immense achievement and down to the hard work of a small group of parents who are passionate about representing the views of **ALL** parent carers in East Sussex.

The role of the parent carer forum is to voice the views of parent carers in East Sussex. This is about all children’s disabilities and all special educational needs. To do this, we need you to feedback your experiences, respond to surveys and tell us what works well and what your greatest concerns are.

There are many roles parent carers can get involved in. There are many focus groups helping to shape the services in East Sussex that parent carers can be part of. Parent carers will be trained and supported to sit on panels at strategic level, representing the views of wider parent carers in East Sussex and feeding back to the parent carer forum. There are many support groups in East Sussex that you can join and feedback into, via your group.

As with any organisation, key skills can really make a difference and before any of us were parent carers we all had skills that can assist with the journey ahead of us now. By pooling our skillsets, we can ensure the voices of parent carers, based on the needs of their families, are heard.

Parent Carer Forums are not places to voice your own child’s needs, they are places to come together to represent all of us, no matter the needs of our children / young people, or whichever education/ health/ social care setting they are in. If this sounds of interest to you, then feel free to sign up and let’s get our collective voices heard.

So, if you have the passion to get parent carers views represented in East Sussex then please go to our website: <https://www.espcf.org.uk/>