



St Mary the Virgin Church of England Primary School

Hartfield East Sussex TN7 4AA

Executive Headteacher: Mr James Procter

Head of School: Miss Becca Hare

Email: office@st-maryhartfield.e-sussex.sch.uk



Term 4 Week 3

Friday 13th March

Attendance

Whole school: week: **97.8%**
year: **96.7%**

Maple: **98.6%** Cherry: **99.2%**

Willow: **96.9%** Lilac: **96.9%**

Red 95 to 96.4% - **Amber**

Green 100% - **Gold**



British Citizen Award

This week's British Citizen award goes to Delia – for being really helpful during parents' evening! You are a real credit to your school.

Well done, Delia!



Head Teacher's Awards

Louis: for amazing independent problem solving and growth mind set in maths.

What a winner!

Ashleigh: for amazing progress in mature use of vocabulary, layout and content. Well done Ashleigh!



Sports Award

Mr D's Sports Stars of the week:

Isla: for excellent focus and improvement, demonstrating great control, during tennis!

Thomas: for great all round performance and attitude to his learning!

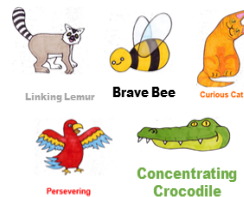
Elodie: for great attitude and improvement in technique during Tennis!

Verity: for excellent all round performance, demonstrating much improved skill and control in Tennis!



Learning Powers Certificate

On **Friday 20th March 2020**, at our Celebration Assembly at **9:30am**, the following children will celebrate their achievements:



Maple: Ruby-Mae **Cherry:** Harry

Willow: Jacob **Lilac:** Ahlia

Please come along if you are free!

Top Tips for next Week:

- Letters home:** Medical Tracker; Cherry, Maypole Dancing
- Tuesday 17th March:** Lilac Forest School
- Thursday 19th March:** Willow Forest School
- Thursday 19th March:** 2:30 -4:30pm Church Street Community Café

Reading Reward Scheme



Thank you for your ongoing support in totting up the minutes read at home, and the additional comments you make.

Reading Records are checked weekly in school by the class teacher or teaching assistant and minutes are counted for the class total.

This week's results for our Reward Scheme:

Maple: 928 minutes Cherry: 686 minutes

Willow: 875 minutes **Lilac: 1184 minutes**

Well done, Lilac, and thank you for your continued support.

If you need the newsletter, or any other school letter, to be in a different format, please speak with Mrs Funnell in the school office.

If you need help or support with access to any information, please also contact Mrs Funnell.

Dates for your diary

All dates are available on school website, but please see below for Term 4

March

16th: Year 6 After School SATs Club
17th: Lilac Forest School (all day)
17th: Willow Swimming
18th: Lilac RSE Session 4 (note change of day)
18th: Lilac local area survey (Hartfield), pm
19th: Willow Forest School
19th: Church Street Community Café - 2.30-4:30pm
20th: Willow to Seven Sisters
23rd: Year 6 After School SATs Club
24th: Cherry to Paradise Park
24th: Willow Swimming
24th: Lilac RSE Session 5
25th: Full Governors Board Meeting at East Hoathly
26th: Lilac Forest School
27th: Whole School Orienteering
30th: Parent Forum - 2.45pm
30th: Year 6 After School SATs Club
31st: Anti Bullying Award visit (volunteers please)
31st: Willow Swimming

April

2nd: Cherry Bake Sale
2nd: Church Street Community Café - 2.30-4:30pm
3rd: Easter Service - 2:30pm at Church. All welcome
3rd: Cherry Bake Sale
3rd: Last Day Term 4

School Clubs

From the end of Term 4, tech club and football will stop.

Our plan is to introduce a Keep Fit Club, which will run after school on a Thursday.

This will mean we will now have a club available after a school every day, with no clashes to confuse choice.

Many thanks



St Mary's



Dates for your Diary

2nd/3rd April - Cherry Bake Sale

16th/17th July - Maple Bake Sale

Rocking Horse and St Mary the Virgin Hartfield

As you will be aware, there is a clothing bank on the school site for collection of unwanted clothing, shoes, accessories and Bric-a-Brac for the Rocking Horse Children's Charity.

For all of the **clothing** you donate to this bank, additional funding is also gained by the school.

Co-op Local Community Fund - Hartfield school

PTFA

Hartfield School PTFA have been chosen to be one of Co-op's local community Fund recipients for the next year until 24th October 2020

Any money received will be spent on new PE equipment.

Co-op members can choose us as their local cause and every time a member buys their own brand products 1% of the value will be donated to local causes, along with all money from the sales of single use shopping bags.

Our nearest co-op stores are in Forest Row or Lingfield and you can sign up for co-op membership at www.membership.coop.co.uk/new-registration

Once you are a member, you can then select Hartfield School PTFA as your local cause.

Please spread the word and encourage your family and friends to support us too.

The co-op logo, and banners, can be found at: www.causes.coop.co.uk/promotional-guide#downloads

PTFA Supermarket Fundraising

Forest Row and Crowborough Tesco - please continue to put your blue tokens in our slot **(both run until the end of March)**



Sports Relief

Over the last week, we have been completing challenges to raise money for Sports Relief.



On Tuesday, we did a hole school 10 minute challenge and on

Wednesday we held a four square tournament!

Thursday consisted of a skipping tournament and finally, on Friday, we did a hula hoop tournament.



Hope, Emilia and Bethan also held a Jumble sale that

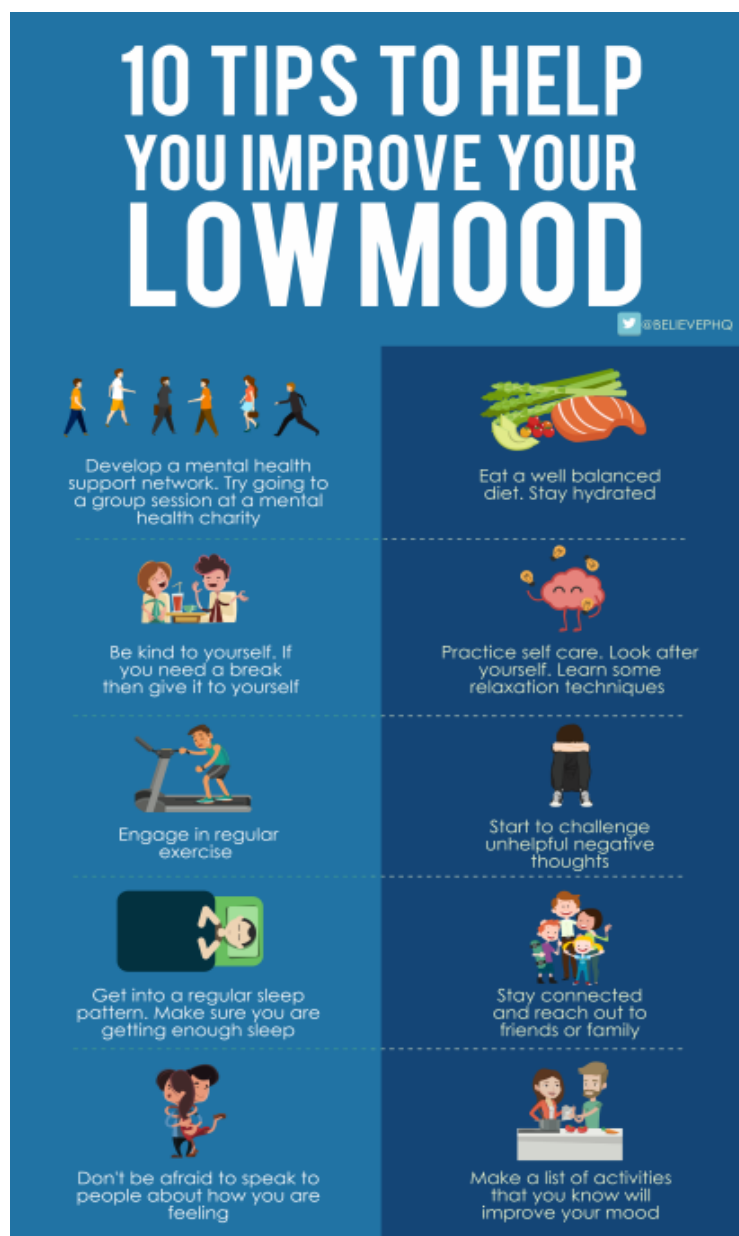
included toys, clothes and baked goods. The total raised so far is £75 - well done everyone!

(Reported by Emilia, Year 5)



Well Being Poster

This week's poster: 10 Tips to Improve Low Mood!

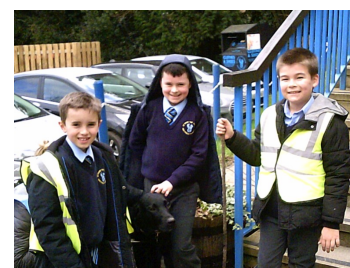
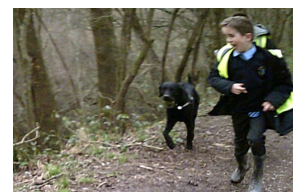


Benny

This week as well as encouraging exercise and fresh air, Benny has been the source of writing with Kishi reporting:

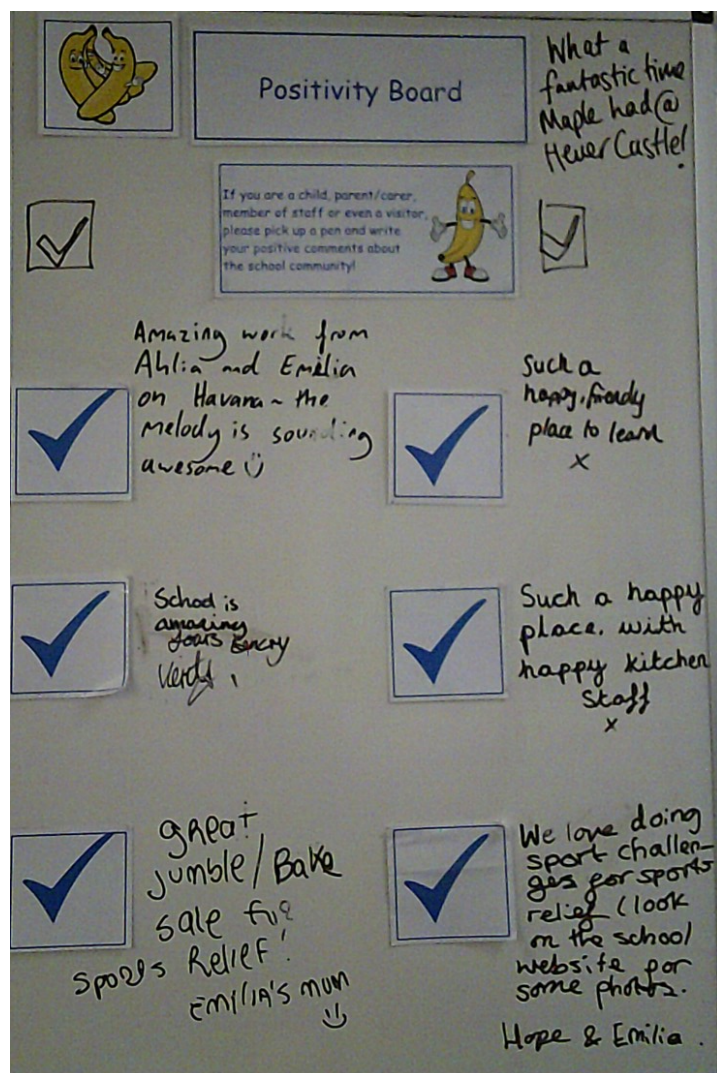


'It's really fun walking Benny (the school dog) because he's very silly and his favourite thing to chase is a stick or a tennis ball. We also get to walk him on the lead with Miss Hare! We walked down the forest school trail. Rhys hypnotised Benny by saying 'Benny return. Benny leave. Benny come here!' It was really funny :) I got to take photos on the journey. I even took one of Benny.'



Positivity Board:

This board enables parents, carers, staff, children and visitors to write positive comments, or thoughts, about their time in school or during events, that they would like to share with others. Please pop in any time to write down something that you would like to share. In the newsletter every week, there will be a picture to share and celebrate the positivity within our school.



Recommended Reads

My name is: *Ned*

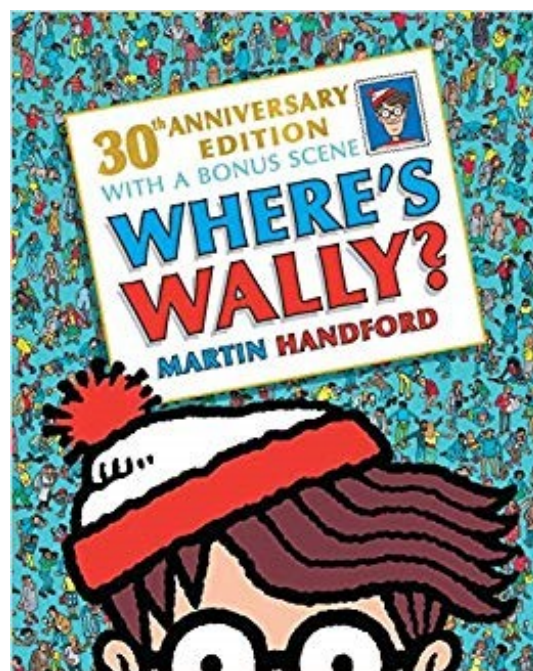
The book I am recommending is:
'Where's Wally?'
by Martin Handford

This book is suitable for age(s):

4-5 6-7 8-9 10-11
12+

I recommend this book because:

You have to find Wally and his travellers. You can do it with your friends and family and it is really fun.



Anti-Bullying and Parent Forum: Monday 30th March 2:45pm

As you will be aware, we are currently working towards our Bronze Anti-Bullying Award and on the 31st March, we have evaluators visiting to see just how Anti-Bullying is a priority at St Mary's. Part of this has meant updating our Anti-Bullying Policy - please see attached and also on the school website. Also attached is the child friendly version created with help from the Anti-bullying Ambassadors. Please share with your children.

To prepare for the evaluation, our next parent forum will be focused around Anti-Bullying strategies, what parents should do if they are worried and what we do as a school to ensure all vulnerable groups feel safe and happy.



Art for All

Unfortunately, due to the escalation in the spread of Coronavirus, Art for All is **being postponed**. Originally scheduled for Saturday 28th March, the event will be rearranged for later this year and we'll let you know the new date as soon as possible. If you have any queries please contact Alison Berry: alisonberry28@yahoo.com or call 01892 770714 / 07763 188538.

Music Assembly

We were fortunate to have two visitors, Nicoline and Roseanna, treat us to some wonderful live Harp and Violin playing on Thursday!

They taught us loads about the instruments, the type of music they play and they played loads of fun games with us that had us thinking about tempo, rhythm and beats of the music. Thanks Nicoline and Roseanna for an inspiring assembly!



Wildlife explorers

Wildlife Explorers put on a play in assembly this week: to show how Fairtrade helps cocoa farmers and the rainforest.

They have learned that:

Fairtrade cocoa farmers are paid a **Fairtrade Minimum Price**

On top of the minimum price, farmer organisations also receive a **Fairtrade Premium**, which helps to provide toilets, clean water and schools for their communities.

Fairtrade farmers support the surrounding rainforest, plants and animals, which means nature helps healthy cocoa trees to grow.



Cherry Class Forest School: Thursday 5th March 2020

The rain fell harder than it has all winter, but we decided that we needed to brave it and go and have a look at the effects of the flooding.

The rain had made huge puddles under the railway bridge. The children had a great time splashing in them and discussing their depth. We took a look at the river Medway. The river

had swollen so much that it was only a couple of centimetres under the bridge! Some water had flooded onto the field. The children talked about how the river may rise overnight as it flows down off the fields.



By the time we had returned to the bridge 20 minutes later, the water had risen even more!

The children showed the IMPACT of Forest School with their scientific questioning and use of maths language to describe the depth of the water and the length of the puddles.

What an amazing afternoon! Well done Cherry class for a wet weather adventure.

After School Club: Forest School

Week 1.

With a couple of brilliant small people, we set off after a busy day at school to tackle the muddy path to the woods. We muddied our boots along the way and had great fun wading in puddles to clean them. The rain came and went again as our hoods went up and down.

The willow was everywhere and we chatted about cats fur trees, catty willow, catty puss tails and calling the trees Ruby and Brian... because they might have other names and if they didn't, then we should help them choose them!

I finally found the elusive hazel flower. A tiny delight, which is tricky to spot, but I felt like a winner when I found a glimpse of ruby red on the tips of the buds.

Having arrived in the woods and demolishing a packet of biscuits, the children set about drilling homes in name disks with brilliant independence. They then created whatever they wanted and threaded them into necklaces. (We've hidden them in a sneaky place for when we return next week.)

Then it was all about the stream...crossing it, testing it's depth, squelching sticks, and generally having a jolly good poke around in the mud.

Thanks for a lovely time. I can't wait until next week!

check out what the children have been up to on the blog on the website: <https://www.sawpitwoods.co.uk/blog>

Miss Munn



Recommended Reads - We Love Reading!

At St Mary the Virgin CEP school, we believe that reading should be enjoyed by everybody and that children (and adults) should have opportunities to lose themselves in a great book.

In order to expand our reading experiences, we are asking staff, children, parents and friends of the school to send in 'recommended reads' for us to explore.

We would like to know the following information:

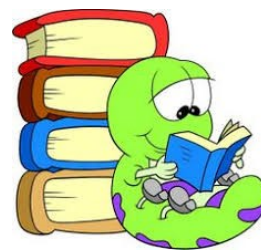
- the name of the book
- the author (and illustrator if applicable)
- recommended age group
- why you recommend the book

To get us started, there is a map, (like the London Underground) attached to the back of this newsletter to help you to think of alternative texts and authors that you and your child might like to explore. The map shows a popular author on each line, and along each line are lots of examples of similar-style texts that are likely to appeal to readers of that author.

Please send your recommendations to the school office (there is a template attached if you would like to use it) and we will share one or two each week in the newsletter and it will then go onto our school website so that you can look back at all the recommendations.



Each term, we will purchase some of the recommended reads for the school library and we look forward to hearing all about the books you have been enjoying!



Recommended Reads!

My name is.....

The book I am recommending is

By

This book is suitable for age (please circle)

Under 4s 4-5 6-7 8-9 10-11 12+ everybody

I recommend this book because



St Mary the Virgin Church

Church Street Café

Church Street Community Café has now been launched! We would love to see you either before or after pick up. There are activities for the children, lots of cake and a healthy eating bowl.

Come and catch up with friends and enjoy being part of the Hartfield Community. All donations are being split between the upkeep of St Mary's and local charities. Our main aim is to bring all ages of our community together. Thank you to those of you who have already supported us. Please find below information with all the dates up until August. Hope to see you soon. Reverend Julie



We look forward to seeing you there.

For Information:

Come and Celebrate
75 Years of Peace

Everyone
Welcome

Entertain-
ments

BBQ
at
The Anchor

The Village
Beacon
Will Be Lit

**HARTFIELD
VE - DAY
75**

8th May 2020

Parish Children's Party in Church Street



More information can be
found on local Facebook
pages.

Time : 2.15pm to 7pm For further details contact: colinburnettdick@yahoo.co.uk 01892 770 088

For Awareness:



EASTER APPEAL



No boxed Easter eggs
Please, due to storage issues



Yes, Crème Eggs
or Mini Eggs



- Tinned Fruit
- Tinned Custard
- Jam
- Sweetcorn
- Ham
- Tinned Spaghetti
- Pasta Sauce
- Tinned Tomatoes
- Pringles
- Tuna

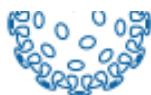
Please, Just these food items until after Easter
Toiletries and Cleaning items are still needed

HAPPY EASTER

from all at East Grinstead Food Bank



Public Health
England



Advice on the coronavirus for places of education

How serious is the coronavirus?

- it can cause flu-like symptoms, including fever, cough & difficulty breathing
- the infection is not serious for most people, including children
- there is currently no vaccine
- most people get better with enough rest, water to drink and medicine for pain

How likely are you to catch the virus?

- you can only catch it if you have been close to a person who has the virus
- the chance of being in contact with the virus is currently low in the UK
- if you have travelled to areas where many people are infected, your chance of catching the virus is higher, i.e. China and any affected areas

How can you stop coronaviruses spreading?

If you need to cough or sneeze



Catch it
with a tissue



Bin it



Kill it
by washing
your hands with
soap & water or
hand sanitiser

You should wash hands with soap & water or hand sanitiser



After breaks
& sport
activities



Before
cooking
& eating



SCHOOL
ETC.
On arrival at
any childcare
or educational
setting



After using
the toilet



Before
leaving
home



Try not to touch your
eyes, nose, and mouth
with unwashed hands



Do not share items that come
into contact with your mouth
such as cups & bottles



If unwell do not share
items such as bedding,
dishes, pencils & towels



Stop germs spreading with our e-Bug resources on hand and respiratory hygiene lesson plans for KS1, 2 and 3: campaignresources.phe.gov.uk/schools

What should you do if you feel unwell?

Keep away from others and stay at home to stop the infection spreading. Avoid public transport if you think you have symptoms of coronavirus. If you become unwell at a place of education, tell a member of staff and let them know if you have travelled to any other countries in the last 14 days.

If your staff member or parent thinks you have symptoms of coronavirus, they should call **NHS 111** for advice. Follow the UK Government advice for childcare or educational settings [gov.uk/government/publications/guidance-to-educational-settings-about-covid-19](https://www.gov.uk/government/publications/guidance-to-educational-settings-about-covid-19). Parents can visit [NHS.UK](https://www.nhs.uk) to find out more information. Teachers and support staff should follow the UK Government advice.

Staff, students and pupils who have returned from Wuhan and Hubei Province in China should self isolate, and NOT attend education or work for 14 days. See [NHS.UK](https://www.nhs.uk) for advice on coronavirus.

If there is an emergency, call 999 immediately

