



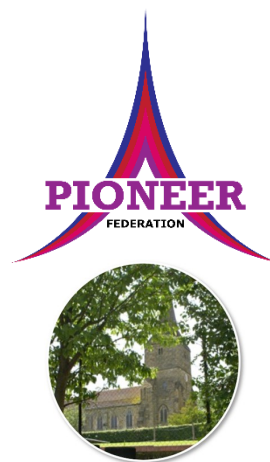
St Mary the Virgin Church of England Primary School

Hartfield East Sussex TN7 4AA

Executive Headteacher: Mr James Procter

Head of School: Miss Becca Hare

Email: office@st-maryhartfield.e-sussex.sch.uk

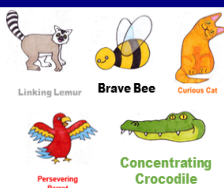


Term 1 Week 2

Friday 18th September

Learning Powers Certificate

In our Celebration Assembly today, the following children celebrated their achievements:



Maple: Charlie **Cherry:** Harley
Willow: Eva **Lilac:** Thomas W

Well done to all!

Attendance

Whole school: week: **87.5%**
year: **92.2%**

Maple: **92.6%** **Cherry:** **75.9%**
Willow: **92.7%** **Lilac:** **94%**

Less than 94.9% - Red **95 to 96.4% - Amber**
96.5 to 99.9% - Green **100% - Gold**



Top Tips

- **After School Clubs:** Dates/information later in the Newsletter
- **Letters/emails home:** Willow, Cherry and Maple Bubble Information.
- **Forest School:** Starts next week. We need your consent forms please.
- **Data Forms:** Please return your forms by Monday 21st September
- **PSHE changes:** Sent out last term and on the website; any feedback to the Office please.
- **Parents Forum:** Please let office know if you want to attend.



British Citizen Award

Ryah-Rose – helping a friend out when they had a bump on the playground and being really kind and caring!

Well done, Ryah-Rose!



Sports Award

Mr D's Sports Stars of the week:

Ryah-Rose: for great listening, effort and perseverance during running drill!

Lukas: for total focus, great effort and excellent progress throughout the lesson!

Lucas: for fantastic attitude, great fun and entertaining everyone during PE, whilst doing his very best

Well done to you all!



Reading Reward Scheme

Thank you for your ongoing support in totting up the minutes read at home, and the additional comments you make.

Reading Records are checked weekly in school by the class teacher or teaching assistant and minutes are counted for the class total.

This week's results for our Reward Scheme:

Cherry: 489 minutes

Willow: 798 minutes **Lilac:** 461 minutes

Well done, Willow!



If you need the newsletter, or any other school letter, to be in a different format, please speak with Mrs Funnell in the school office.

If you need help or support with access to any information, please also contact Mrs Funnell.

Dates for your diary

Please see below for Term 1

September

21st: Breakfast Club begins

21st: ArtyTime begins after school

22nd: After School Forest School Clubs begins

24th: Mac-Fit Keep Fit begins after school

24th: Maple Forest School

28th: Parent Forum (PSHE)

October

1st: Cherry Forest School

7th: Harvest Festival in school

8th: Willow Forest School

14th: Wellbeing Day

15th: Lilac Forest School

20th: Full Governors Board Meeting

(via google-meet)

23rd: Last day of Term 1

November

2nd: First day of Term 2

St Mary's



Rocking Horse and St Mary the Virgin Hartfield

As you will be aware, there is a clothing bank on the school site for collection of unwanted clothing, shoes, accessories and Bric-a-Brac for the Rocking Horse Children's Charity.

For all of the **clothing** you donate to this bank, additional funding is also gained by the school.

Co-op Local Community Fund - Hartfield school

PTFA

Hartfield School PTFA have been chosen to be one of Co-op's local community Fund recipients until 24th October 2020

Any money received will be spent on new PE equipment.

Co-op members can choose us as their local cause and every time a member buys their own brand products 1% of the value will be donated to local causes, along with all money from the sales of single use shopping bags.

Our nearest co-op stores are in Forest Row or Lingfield and you can sign up for co-op membership at www.membership.coop.co.uk/new-registration

Once you are a member, you can then select Hartfield School PTFA as your local cause.

Please spread the word and encourage your family and friends to support us too.

The co-op logo, and banners, can be found at:

www.causes.coop.co.uk/promotional-guide#downloads

AGM: This will be held 'virtually'. If you would like to attend, please let us know.

IDEAS: With restrictions on our usual activities, if you have and fund raising ideas, please let us know!

Breakfast Club

Breakfast club will commence with Miss Jane on Monday 21st September.



We need to know at least

24hours in advance if your child(ren) will be attending, paid in advance.



Breakfast Club costs £4 per session, paid through ParentPay. Contact the Office to book.

After School Clubs

Please see above for start dates.

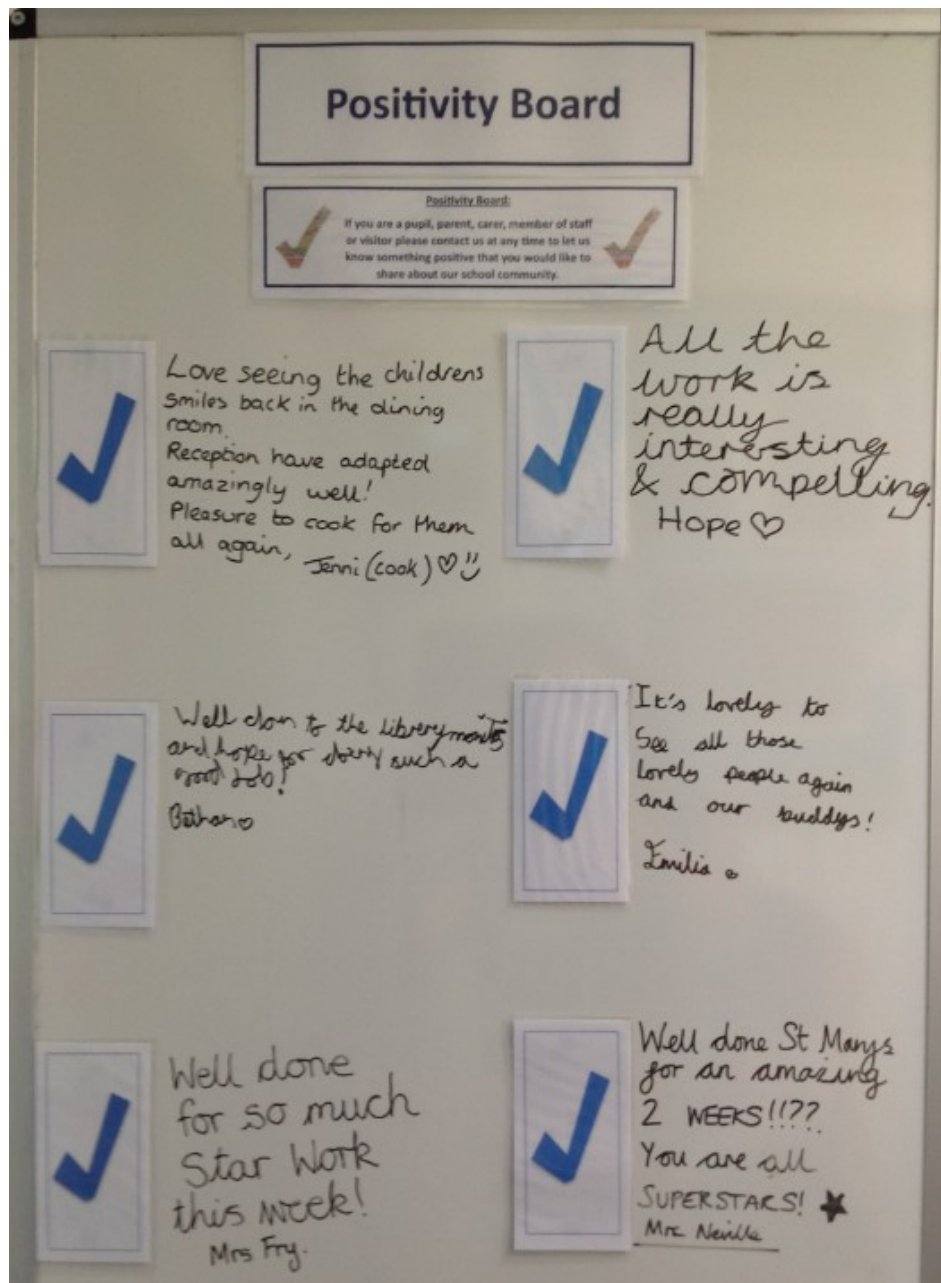
If your child(ren) wish(es) to join a club this term, there are still spaces on Thursdays with Tami Carey of Mac-Fit (who will be running a Keep Fit club), and on Tuesdays with Miss Munn who is running an afterschool Forest School Club.

All information needed to register is on the website. Please be aware if you have not booked, your child will not be able to stay.

As we continue to look for new clubs to run after school, please let the office know if you are aware of any that we can look into.

Many thanks





Positivity Board

This board enables us to write positive comments, or thoughts, from parents, carers, staff, children and visitors that they would like to share with others about the school, their classes, the children or events.

Please contact us at any time to let us know something that you would like to share. In the newsletter every week, there will be a picture to share and celebrate the positivity within our school.

Maple Class

This week, we have been reading the story Farmer Duck. We have made our own puppets and told the story to each other. The children have been busily exploring the classroom and resources through their independent learning inside and outside the classroom. They have been familiarising themselves with the

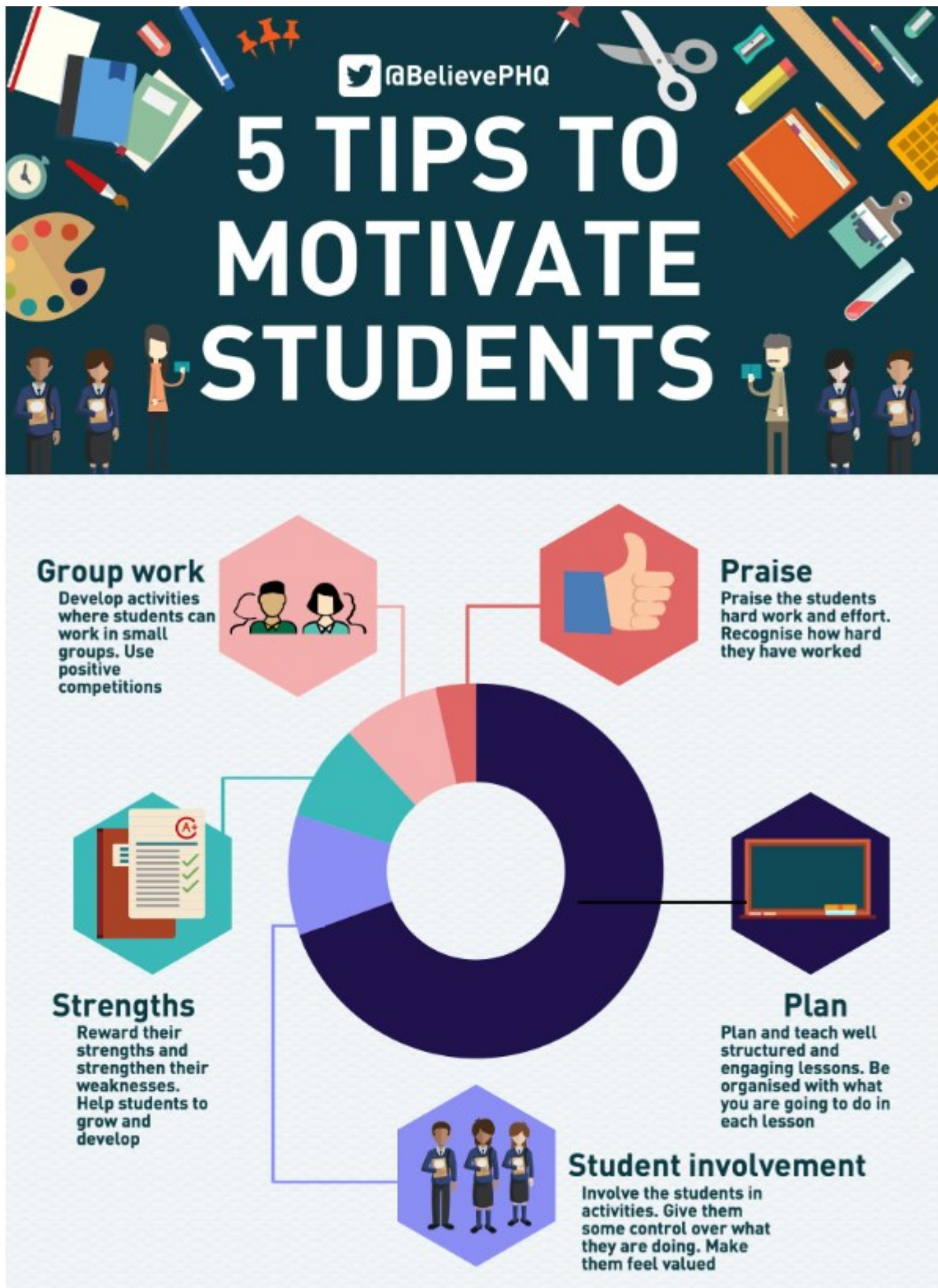


school and routines and have completed their first week of full time school! What an achievement!



Well Being Poster

Following our 'eating to increase our brain power' from last week, this week's poster looks at ideas for Motivation!



Well Being



Over the next few months,
we are working towards the

WELLBEING

AWARD FOR SCHOOLS

This is a whole-school activity to help improve the
emotional wellbeing and mental health of everyone.



To find out more
or to get involved, contact your
Wellbeing Award Coordinator:

Miss Banks



Dear parents,

At St Mary's, we are currently working to achieve a Wellbeing Award.

In order to evaluate our current provision, we need your input. Your views are important in helping us understand what we are doing well and how we can do even better.



Please follow the link below to complete the survey - it should only take a couple of minutes. All responses and suggestions will be carefully considered and used to plan a range of school improvements. If you would prefer a hard copy of the evaluation, please ask Mrs Funnell.

<https://app.awardplace.co.uk/stakeholder-evaluations/user-survey/5f5b8b6c05de3>

Thank you,

Miss Banks

Opportunities

SUPPORTING an ANXIOUS child



on-line training

Audience: Parents, Carers, Professionals

Parents: £8.50

Professionals: £12.50

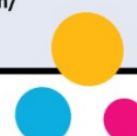
Date: 6th October 2020

Time: 8pm – 9.30pm

Venue: Vimeo Live Stream

This empowering talk, led by Founder of the Child Therapy Service, Tracy Chadwick – will unpick why some children struggle with anxiety and know what to put in place, to support them.

<http://childtherapyservicecic.eventbrite.com/>



Opportunities

Managing Demand Avoidance



on-line training

Audience: Parents, Carers, Professionals

Parents: £8.50

Professionals: £12.50

Date: 20th October 2020

Time: 8pm – 9.30pm

Venue: Vimeo Live Stream

Pulling together strategies used within special education settings, this expert talk explores different styles of managing demand avoidance in young children.

<http://childtherapyservicecic.eventbrite.com/>



Recommended Reads - We Love Reading!

At St Mary the Virgin CEP school, we believe that reading should be enjoyed by everybody and that children (and adults) should have opportunities to lose themselves in a great book.

In order to expand our reading experiences, we are asking staff, children, parents and friends of the school to send in 'recommended reads' for us to explore.

We would like to know the following information:

- the name of the book
- the author (and illustrator if applicable)
- recommended age group
- why you recommend the book



Please send your recommendations to the school office (there is a template below if you would like to use it) and we will share those received each week in the newsletter and it will then go onto our school website so that you can look back at all the recommendations.

Each term, we will purchase some of the recommended reads for the school library and we look forward to hearing all about the books you have been enjoying!



Recommended Reads!

My name is.....

The book I am recommending is

By

This book is suitable for age (please circle)

Under 4s 4-5 6-7 8-9 10-11 12+ everybody

I recommend this book because