



# St Mary the Virgin Church of England Primary School

Hartfield East Sussex TN7 4AA

Executive Headteacher: Mr James Procter

Head of School: Miss Becca Hare

Email: office@st-maryhartfield.e-sussex.sch.uk



Term 5 Week 5

Friday 21st May

## British Citizen

This week's British Citizen award goes to Aidan for being a really kind friend and looking out for other children on the playground to make sure they have a friend to play with.



Well done, Aidan!

## Attendance

Whole school: week: 97.5%  
year: 97%

Maple: 93.3% Cherry: 96.7%

Willow: 98.5% Lilac: 99.6%

Less than 94.9% - Red 95 to 96.4% - Amber  
96.5 to 99.9% - Green 100% - Gold



## Headteacher Awards

This week we have three Headteacher awards:



**Phoebe** for amazing progress in writing - particularly thinking of creative and varied sentence starters.



**Zachary** for incredible progress in writing using a range of sentence types to create a really exciting letter.



**Joe** for excellent work in maths including division by 10 and 100 into decimals.

Well done Phoebe, Zachary and Joe!

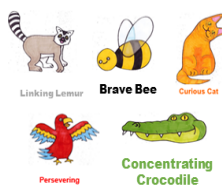
## Top Tips

- Letters home:** Whole School: May Fair. Lilac Class: Isle of Wight confirmation and meeting date. Year 6: Health Screening information. Maple Class: Health Screening information and Vision Screening.
- Parent Consultations:** If you have still not had a Parent Consultation and have no date fixed, please contact the office.
- Face Covering:** Please remember to wear your face covering when collecting and dropping your children at school



## Learning Powers Certificate

In our Celebration Assembly today, the following children celebrated their achievements:



Maple: Cece Cherry: Scarlett

Willow: Joe Lilac: Fleur

Well done to all!

## Reading Reward Scheme

Thank you for your ongoing support in totting up the minutes read at home, and for the additional comments you make in the reading records.

Reading Records are checked weekly in school by the class teacher or teaching assistant and minutes are counted for the class total.

This week's results for our Reward Scheme:

Maple: 684 minutes

Cherry: 1,946 minutes

Willow: 1,181 minutes

Lilac: 4,005 minutes

Well done, Lilac!



If you need the newsletter, or any other school letter, to be in a different format, please speak with Mrs Funnell in the school office.

If you need help or support with access to any information, please also contact Mrs Funnell.

### Sports Award

This week, the awards go to:

**Jacob:** for excellent fielding skills, especially throwing and catching in Cricket.

**Isla:** for fantastic reflexes, great hand to eye co-ordination and brilliant catching in cricket.

**Emily:** for excellent listening and participation during athletics.

**Noah:** for great listening, following instructions and participation in PE.

**Well done to you all!**



### Dates for your Diary

#### May

25th: Willow Class Swimming

26th: Maple Class Groombridge Place

28th: May Fair

28th: Last Day of Term

#### June

7th: First Day Term 6

9th: Lilac Class meeting 3:30pm

10th: Health Screening YR and Y6

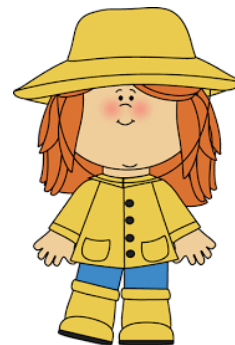


### The English Weather

Whilst we are well into Spring and a month today is Mid Summer's Day, we are constantly at the mercy of our ever changing English weather. This week has ranged from bright sunshine to hailstones, chilly to quite warm!



With this in mind, please would you ensure your children come to school with warm clothing and a rain coat and when the sun shines in earnest, pre-applied sun lotion, a hat and water bottle.



### St Mary's



Our lovely PTFA continue their work behind the scenes so don't forget to have the School on your **Amazon Smile** account, be signed up to 'Easy Fund Raising', add any **clothes** to our collection bin, or to pop us onto any re-orders for **Stikins** labels!

The PTFA is always open to new volunteers so if you have a bit of spare time and would be happy to join them, please get in touch.



### Unwanted Bedding Plants

If you are splitting any plants or clearing any flower beds, we are planning to develop the colour at the front of school so any unwanted foliage will be appreciated!



### School Value and weekly reflection

Each term, we focus on a Christian Value with weekly reflection in assembly and in Class.

We would like to develop this further by asking you to discuss the reflection of the week with your child(ren) at home.

This term we are looking at Friendship.



## Friendship

#### **Week 5:**

Mobile phones can be great to communicate with our friends. They can also be a distraction or a negative way to say unkind things.

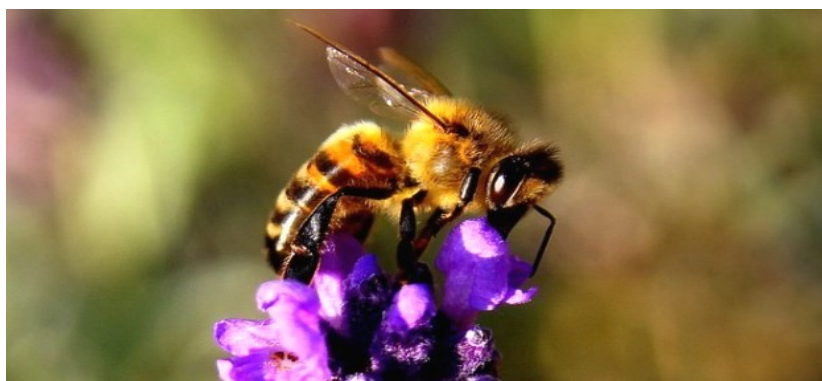
As a class, make a list of good and bad things about having a mobile phone.

## Wildlife Explorers

This week, the Wildlife Explorers learned that in order to feed the world's growing population, we need more food, which must be diverse, balanced and of good quality to ensure the progress and well-being of humankind.

Bees are renowned for their role in providing high-quality food (honey, royal jelly and pollen) and other products used in healthcare and other sectors (beeswax, propolis, honey bee venom). But the work of bees entails much more!

The greatest contribution of bees and other pollinators is the pollination of nearly three quarters of the plants that produce 90% of the world's food. A third of the world's food production depends on bees, i.e. every third spoonful of food depends on pollination.



There are almost 20,000 different species of bees in the world. They live in colonies and in each colony there are three types of bees, the queen bee, the worker bee and the drone. The worker and the queen bee are both females, but only the queen bee can reproduce. All drones are male. Worker bees' tasks are to clean the hive, take care of the offspring and collect pollen and nectar to feed the whole colony. The drones' task is to mate with the queen and the queen's job is to lay eggs.

The explorers also found out about the Honey Bee Waggle Dance. The **waggle dance** tells the watching bees two things about a flower patch's location: the distance and the direction away from the hive. The **dancing** bee **waggles** back and forth as she moves forward in a straight line, then circles around to repeat the **dance**. The time taken reveals how far away food is and the angle of the dance shows the direction of food.

The Big Question the Explorers wanted to know was: "How do the other bees know what the dance means?"

However, this is a question that scientists are still investigating so as with all our knowledge when we learn something new, there are even more questions to ask!



## Benny



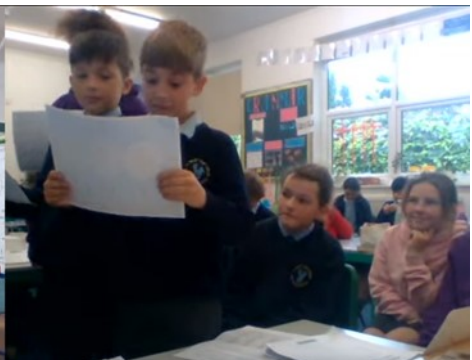
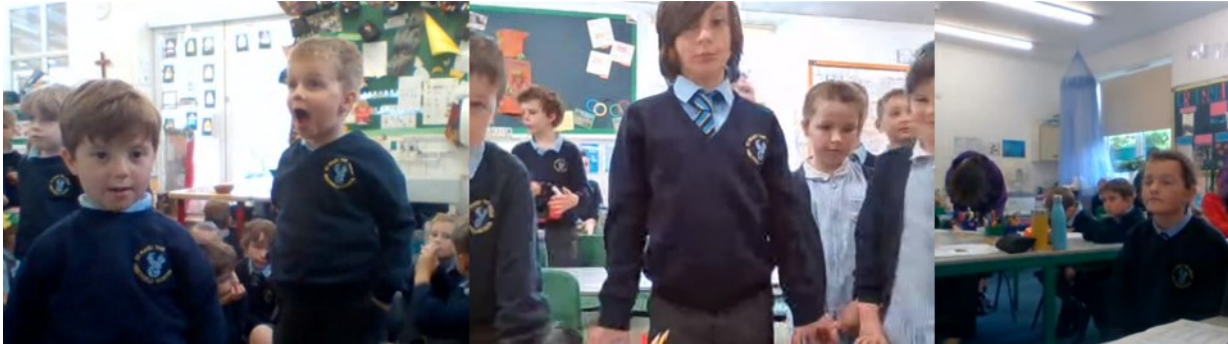
Benny has been kept busy this week, modelling for a beautiful Lego sculpture!

St Mary the Virgin Church of England Primary School, Hartfield, East Sussex, TN7 4AA

Tel: 01892 770221 Email: [office@st-maryhartfield.e-sussex.sch.uk](mailto:office@st-maryhartfield.e-sussex.sch.uk) Website: [www.pioneerfederation.co.uk](http://www.pioneerfederation.co.uk)

## Celebration Assembly

Every Friday morning we have our virtual Celebration assembly as a whole school! It's a brilliant opportunity to see the whole school together and lovely to see the children waving to their friends in other classes. We celebrate those who have been on Blue or the Star during the week, as well as giving out Learner of the Week, Sports Star, British Citizen and awarding the Reading Cup and Attendance Ted to the winning class. We finish each assembly with cheering a big happy birthday to those who have celebrated birthdays in the week - it's the best way to start a Friday morning.

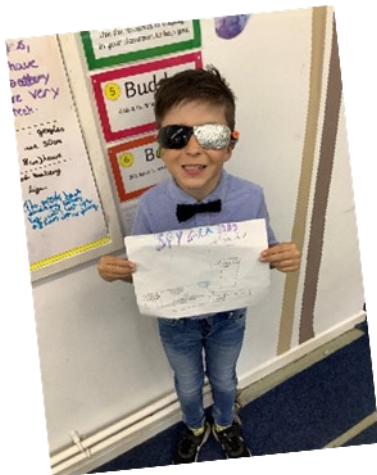


## Lilac Class' Spy Day!

Thursday 20<sup>th</sup> May 2021



This week, Lilac Class finished off their topic, 'Codebreakers' with our very own Spy Day! We all came dressed in our best spy gear and brought in our home projects to present to the rest of the class. We had designed and written about our own spy gadgets in Literacy and brought them to life this week – well, as best we could, some of our ideas would take a lot more money and resources to actually build! Some of the gadgets we saw were spyglasses, spy pens, laser books, freeze-ray chocolate, USB credit cards and spike shoes. During the day, we learnt about the work of Alan Turing and others at Bletchley Park throughout World War 2 and even had a go at our own code breaking. We wrote descriptively about life at Bletchley Park based on some illustrations by an artist called Alex Leigh Whitworth and everyone created their very own secret spy names. I wonder if any of these amazing spies-in-training will end up working for Mi6 one day?



St Mary the Virgin Church of England Primary School, Hartfield, East Sussex, TN7 4AA

Tel: 01892 770221 Email: [office@st-maryhartfield.e-sussex.sch.uk](mailto:office@st-maryhartfield.e-sussex.sch.uk) Website: [www.pioneerfederation.co.uk](http://www.pioneerfederation.co.uk)

## Positivity Board

This board enables us to write positive comments, or thoughts, from parents, carers, staff, children and visitors that they would like to share with others about the school, their classes, the children or events.

Please contact us at any time to let us know something that you would like to share. In the newsletter every week, there will be a picture to share and celebrate the positivity within our school.



## **Well Being Poster**

Following an email received from 'info@projectgenz.co.uk', this week we look at maintaining a healthy relationship with money.

# **Top 5 money tips for parents!**

## **1. Create good savings habits**

Each time your child receives pocket money or birthday money, encourage them to save 10%. This is a great habit that can begin a life long habit of saving.

## **2. Set savings goals**

Set a savings goal together. Find something your child wants and show them how easy it is to break the savings goal down. Encourage them to save for things and feel 'awesome' when they achieve their goal. This also helps to build confidence and self-esteem.

## **3. Learn the difference between wants & needs**

Children sometimes find it hard to understand that there is a difference between things they want and things that they actually need. Explaining the difference will help them to build a healthy habit and strengthen decision making - it will also help to avoid instant gratification.

## **4. You are never too young to earn!**

Teaching children to earn money at a young age is an excellent way to build enterprise skills and confidence.

## **5. Learn the gift of giving**

It is not all about spending on and saving for, self! Teach your children to enjoy the gift of giving to help other people. Find a cause or a local charity to donate to and discuss how it feels to give; this helps to encourage children build a social connection and increase self esteem.

**From the Starfish Malawi Newsletter:**

Thank you for your continued support of Starfish Malawi. Without your donations and prayers, our work would not be possible. We thank God every day for what He is doing in Malawi and here with us in the UK.

Starfish Malawi does not have building and construction as a core goal, but, in order to help and assist those communities in which it works, there are many times when a project needs to have a structure built before the work can develop and benefit the community.

**Thugulu School** is linked with Ightham Primary School in Kent. In 2018 through a combined fundraising effort between the School, St. Peter's Church and the local Ightham community, the £7,500 required for the building of two new classrooms was raised. The school has 865 children and the new block has made a real difference to the education of the children



**Education in Chapsinja**

In 2009 in partnership with Crowborough Christian Men's Discussion Group based at All Saints Church Crowborough and Hope Missions, Starfish began to facilitate education in this small village a few miles outside Lilongwe the capital of Malawi. First a nursery was built followed by one double classroom block per year until four were constructed offering primary education Chapsinja and surrounding villages.

This school is a lifeline for the village and provides 700 children with quality education, giving them the benefit of a brighter future.

**Trinity School, Moyo.** Local chiefs agreed to give a plot of land at Moyo and UK charity Mission Direct stepped in to be the funding partner for a project aimed at providing a primary school to be built to enable children from four local villages to no longer walk four miles to school.



The project is in its early stages and with one double classroom block and latrines completed, the school opened in March 2021. The next classroom block is planned for 2022 and thereafter, each year another classroom block so that in time there will be a complete primary school.



**Hope Clinic** As a result of a comment by the clinical officer in the Glad Tidings children's clinic, during the UK team visit in 2018, the clinic became a reality! The team was told that one of the desires that the officer had was to be able to treat the adults with medical care as well as their children.

However, at that time he was only licensed to treat the children. Following that conversation, Starfish reviewed the situation of healthcare for adults in the Ngolowindo area and found out that people in the rural have had to walk 12.6 kms to the nearest free medical clinic and back, when they are unwell! The Hope Clinic was constructed which enables any adult who needs care, to be treated locally, as the clinic is situated close to four villages where an estimated 13,000 people live. It is providing healthcare to 450 people a day.



**Bowl Water Fundraising** walk around the amazing Bowl Water is nearly here! **Saturday 19th June** is the date to save in your diaries. We really look forward to seeing you at the event. We currently have 62 walkers and would love to have many more. Please encourage your friends to register, which is really simple, by visiting our webpage at [Bowl Water Sponsored Walk — Starfish Malawi](#) and completing the registration form after which Nikkie will send you all you need to know.