



# St Mary the Virgin Church of England CE Primary School

Hartfield East Sussex TN7 4AA

Executive Headteacher: Mr James Procter

Co-Heads of School: Mrs Becca Bastin and Mrs Abbie Hill

Email: [office@st-maryhartfield.e-sussex.sch.uk](mailto:office@st-maryhartfield.e-sussex.sch.uk)



Term 1 Week 4

Friday 30th September

## School Value and weekly reflection

Each term, we focus on a Christian Value with weekly reflection in assembly and in class.

We would like to develop this further by asking you to discuss the reflection of the week with your child(ren) at home.

This term, we are looking at Generosity, mingled with our school values and this week we are looking at:



**Generosity**

Think about how generous you are with your time and talents. How are you sowing seeds for the future? Write your ideas on an apple diagram to create your own family apple tree!

## Attendance

The Pioneer Federation goal is an average attendance rate of 97%, recognising that each school day provides opportunities for learning, as well as social and emotional development. It is noticeable when students miss school as it impacts on their progress.



**Please support us and your child by ensuring their attendance is a priority.**

**Whole school: week: 91.6%  
year: 95.4%**

<b>Maple: 83.3%</b>	<b>Cherry: 95.4%</b>
<b>Willow: 91.7%</b>	<b>Lilac: 91.5%</b>
<b>Less than 94.9% - Red</b>	<b>95 to 96.4% - Amber</b>
<b>96.5 to 99.9% - Green</b>	<b>100% - Gold</b>

**Well done to Cherry Class!**

## Top Tips

**Letters and emails home:**

**Whole School**

◇ Inter-House Cross Country

**Harvest Festival:**

Please remember it is our Harvest Festival next **Wednesday, 5th October**. We would love to see you at church from 9:15am if you are able to celebrate with us.

**Tempest Photography:**

The school photographer is on school on Tuesday 4th October to take individual and sibling photos. These can only be taken if the form has been returned so please check bags and let Mrs Funnell know if you need a new one!

**MacMillan Coffee Morning:**

Thank you to Lilac Class and everyone who supported our MacMillan Coffee Morning. We raised an outstanding **£200.13!**



## Reading Reward Scheme

Our Whole School Reading Reward Scheme will continue with your ongoing support required to tot up the minutes read at home. Please add additional comments in the reading records if required. Reading Records are checked each week and minutes counted for the House total.



This week's results:

<b>Rother:</b>	<b>306 minutes</b>
<b>Teise:</b>	<b>514minutes</b>
<b>Cuckmere:</b>	<b>613 minutes</b>
<b>Medway:</b>	<b>619 minutes</b>

**Well done, Medway!**

If you need the newsletter, or any other school letter, to be in a different format, please speak with Mrs Funnell in the school office.

If you need help or support with access to any information, please also contact Mrs Funnell.



## St Mary's Star Skills

"Skills for learning, skills for life"



Each week, one pupil from each class is identified for their 'star skills' development. Staff and other pupils share the skills they have noticed through the week, which are then recognised in Celebration Assembly each Friday.

With so many Star Skills developing, we choose one each week to highlight in the Newsletter.

**Joe:** has shown amazing **Creativity** this week, with an absolutely fantastic spy gadget design, choosing brilliant vocabulary to help describe it.

**Amelia:** has demonstrated excellent **Teamwork**, working as a team to dry up in Breakfast Club, organising laptops and helping to set up for sessions.

**Liv:** has displayed amazing **Problem Solving**, always showing a desire to have a go at any task, no matter how tricky!

**Ruby:** has shown fabulous **Listening Skills**, being really careful as she listened when trying to guess who was speaking in our Apple Pie game.

**Well done to you all!**

Next week, we will be looking at how Alfred, Isaac, Joshua and Luca develop their skills.

### Opportunity



Head Coach: Jon Prenelle  
07495 368571

[kentandsussextennis@outlook.com](mailto:kentandsussextennis@outlook.com)

contact head coach, Jon Prenelle:

Email: [kentandsussextennis@outlook.com](mailto:kentandsussextennis@outlook.com)

Call: 07495 368571

Our tennis club this term has become very 'bespoke' with four members enjoying high levels of tutoring after school on Wednesdays. If you would like to join this group and develop your skills in tennis, please

## September

### October

4th: Tempest Photography

5th: Harvest Festival Service in Church  
9:15am - 10:00am

6th: Lilac Class Forest School

6th: Community Café 2:00pm - 4:00pm

9th: Celebration Assembly 9:15am - 9:30am

11th: Dogs Trust Workshops

12th: Willow Class Trip - Herstmonceux

12th: Cross Country, Beacon Academy  
- selected 5/6 students

12th: Open Morning - Prospective Parents  
10:00am - 11:00am

13th: Maple Class Forest School

14th: Celebration Assembly 9:15am - 9:30am

20th: Community Café 2:00pm - 4:00pm

21st: Celebration Assembly 9:15am - 9:30am

21st: Last Day of Term 1

31st: First day Term 2

### November

3rd: Maple Class Forest School

3rd: Community Café 2:00pm - 4:00pm

4th: Celebration Assembly 9:15am - 9:30am

4th: Flu Vaccine

### Pre-planning for Christmas:

### December

7th: Nativity Performance

16th: End of Term Service - 2:30pm

### Sports Award

This week, sports awards go to

**Finlay:** who has worked extremely hard and shown great perseverance in his running.

**Abigail:** who has given great effort and focus during Cross Country practice.

**Elsie:** who has shown fabulous attitude and great effort during Cross Country practice.

**William:** who has listened brilliantly, followed instructions and given great effort during Cross Country practice.





## Weekly Peek

Each week we are going to take a closer look into one of our classrooms to see what they have been up to.

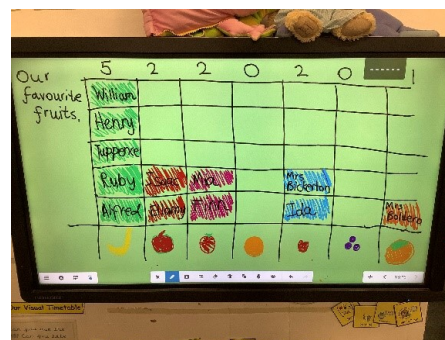
This week, we 'take a peek' into Maple Class:

Maple Class has had a very busy week. We have been reading 'Rosie's Walk', and creating speech bubbles for our story map.



We have also been painting chickens, using forks!

In maths, we have been learning to recognise the number 3. We have also been creating bar graphs, that help us to learn more about each other.



We have been gaining confidence with the first set of Phase 2 sounds and working on our pencil grips.

It has been so fun playing and getting to know each other:

Building hotels,



riding our 'taxi' bikes,



and cooking family meals.



Exploring outside of the classroom, we've loved playing 'Duck, Duck, Goose' and 'What is the Time, Mr Wolf?'





## MacMillan Coffee Morning

On Wednesday 28th September, pupils from Lilac class held a coffee morning to raise money for the Macmillan Cancer Support charity.

They wrote letters inviting people from across Hartfield, spent their lunchtimes popping them into envelopes and then our lovely Megan (with help from Eva) spent her weekend posting them through letterboxes.

It was so fantastic to see so many people come and join us for coffee, tea and cake. Our pupils made brilliant baristas and engaged so beautifully with our guests.

This term, we have been asking ourselves, 'How and why should we give our time to others?' and this event was a perfect example of why.

Mrs Funnell said that many commented on how polite and helpful the children were and what a pleasant morning it was.

Lilac Class were superstars from start to finish, setting up the hall, chatting and serving our guests and then tidying away at the end. We are so proud of them.



A big thank you to everyone who donated something baked and also to Kerry & the PTFA for providing hot drinks and serving.

What a great way to spend a Wednesday and, even better, we raised a whopping **£200.13!**

## Wildlife Explorers

Last week the Wildlife Explorers learned which endangered animals are really at risk from extinction. Take a look at the notice board for information on what everyone can do about it.



This week members checked the United Nations sustainability goals. They discussed the flag which celebrates 7 years of many countries agreeing to support improvements in our natural world.

Understanding the United Nations goals is very important and our picture shows the club holding up the UN flag.

## Vacancy

We are looking for (a) dedicated Site Manager(s) to help keep our East Hoathly, Chiddingly, St Mary's and Park Mead premises looking their best. (East Hoathly, Chiddingly and St Mary's sites from September 2022 and our Park Mead site from January 2023)

Applicants are welcome to apply for one or more of our schools, approximately 12.5 hrs per week for each school, therefore hours could be part-time or full-time.

For more details please visit the [information tab](#) on our website.



**Parenting Guide | East Sussex**  
**What's On – Oct, Nov and Dec 2022**

Each 'long term', East Sussex Local Authority, through 'Open for Parents', provide online support to parents.

Open for Parents have a Facebook Page, a Website and offer a variety of Webinars across the term.

Find handy hints on variety of topics by visiting:  
<https://pioneerfederation.co.uk/stmarys/wp-content/uploads/2022/09/Countywide-Parenting-Guide-OCT-NOV-DEC-2022.pdf>



## Harvest Festival

Our Harvest Celebration this year is on **Wednesday 5th October, 9:15am** at St Mary the Virgin Church.

As last year, we will be joining with St Mary's Church to send donations to [Crawley Open House](#) and have been in touch with the charity to find out what items they need most.

If you are able, please could you send your child(ren) in on the morning of Wednesday 5<sup>th</sup> October with something from the list below. The children will bring these up to the front of church during the service. There will also be a collection plate available for any families who feel they are able to make a monetary donation to the charity.



### Crawley Open House's shopping list:



- Long-life milk
- Toilet roll
- Sugar
- Preserves, biscuits, chocolate & sweets
- Tea and coffee
- Tinned potatoes, vegetables, beans & spaghetti
- Custard and rice pudding
- New socks & underwear for men and women
- Dog food and treats



There are so many reasons for us to give thanks to God for the blessings we receive, and we would like to thank you for your continued support .

We look forward to seeing as many of you who able to attend our Harvest Festival service.

## PTFA

Our lovely PTFA continue their work behind the scenes so don't forget to have the School on your **Amazon Smile** account, be signed up to '**Easy Fund Raising**', add any **clothes** to our collection bin, or to pop us onto any re-orders for **Stikins** labels!

The PTFA is always open to **new volunteers** so if you have a bit of spare time and would be happy to join them, please get in touch. Currently searching for a new **TREASURER!**

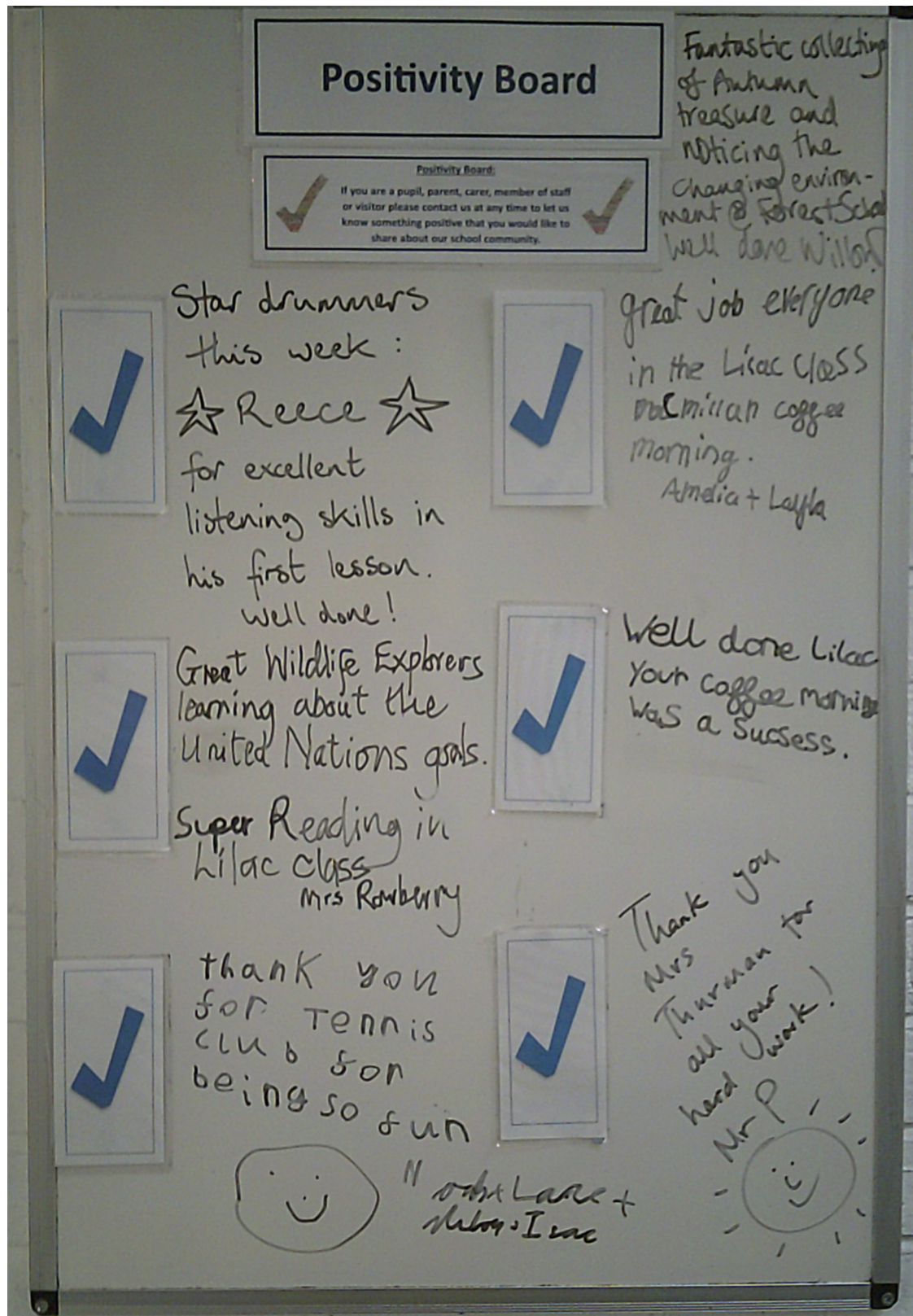
St Mary's



## Positivity Board

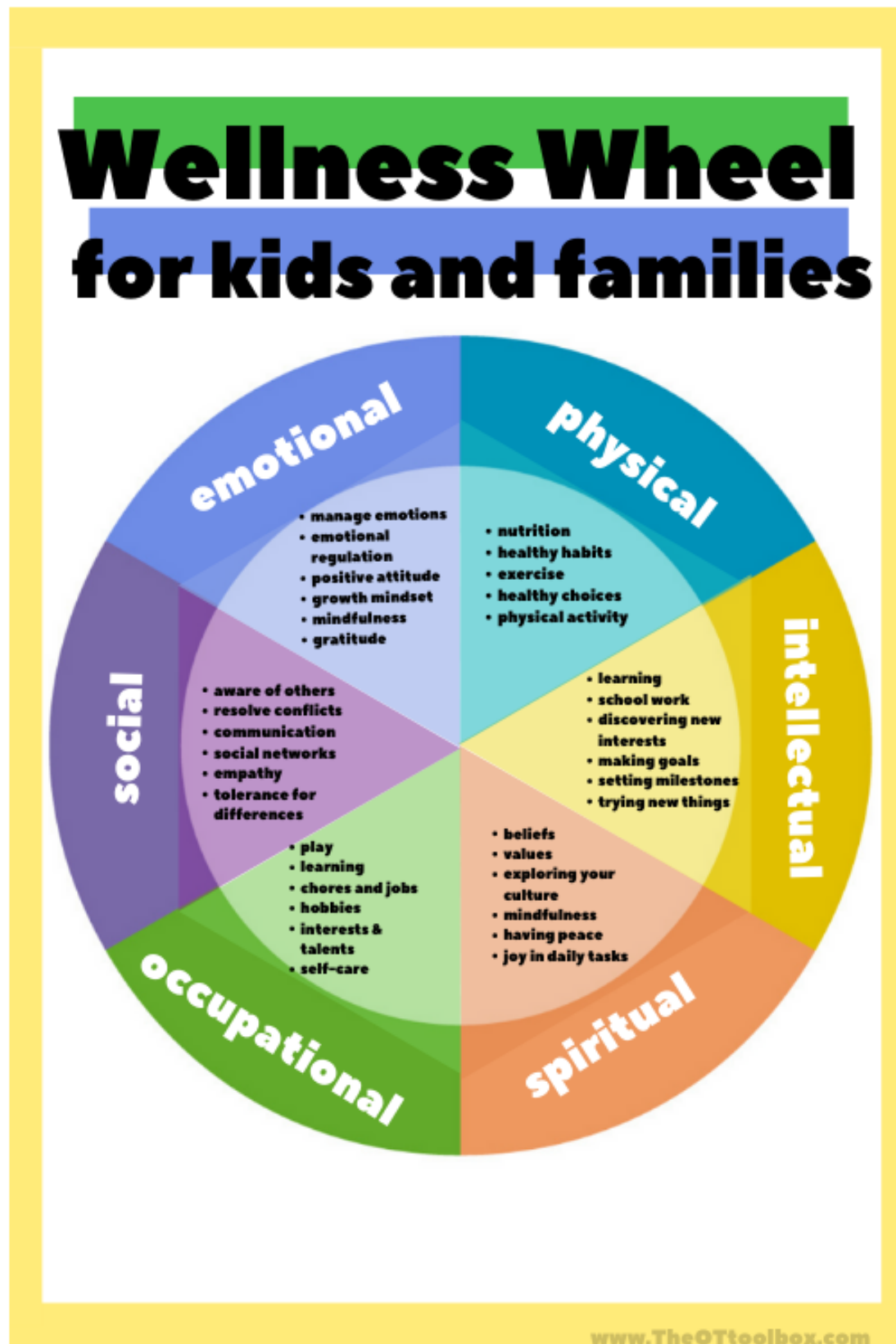
This board enables us to write positive comments, or thoughts, from parents, carers, staff, children and visitors that they would like to share with others about the school, their classes, the children or events.

Please contact us at any time to let us know something that you would like to share. In the newsletter every week, there will be a picture to share and celebrate the positivity within our school.



## Wellbeing Poster

This week's wellbeing poster is taken from the [OT Toolbox.com](http://OTToolbox.com). And gives a graphic description of all of the wellness concepts that make up the components of a well-balanced lifestyle.





### Opportunity

**1ST & 3RD SUNDAYS, 9.30AM**



From ages 3-6  
& 7-11 years  
old

Dates of Sunday  
Discoverers this term

18th September  
2nd October  
16th October  
6th November  
20th November  
4th December  
18th December

Join us as we learn...



About a lost  
coin and lost  
son

About Jacob and  
his friendship  
with God



About the birth  
of Jesus!

### Opportunity

#### **CHURCH STREET COMMUNITY CAFÉ**

Please come and join us at our community café  
on the 1<sup>st</sup> and 3<sup>rd</sup> Thursdays of the month.  
Enjoy delicious homemade cake, coffee and tea.  
All ages welcome - Children's area for babies and  
toddlers and their carers.

An opportunity to meet old friends  
and make new ones.

We look forward to seeing you on



Thursday 6th October for our  
Macmillan Cancer Support 'World's  
Biggest Coffee Afternoon'

and on Thursday 20th October for our  
regular café.



Donations welcome for Macmillan Cancer  
Support on 6th October and towards the upkeep of St  
Mary's Church on 20th October. We now have a  
contactless debit/credit card payment station.  
Find us in St Mary's Church at the top of Church  
Street.

For more information contact

Joanne Griffin on 07941 856715 or email  
msjoannegriffin@gmail.com

### Opportunity



**BOOST  
NETBALL CLUB  
HEATHFIELD**

**Bee  
Netball**

Age: 5-9 Years

**SATURDAY**



**Date: Starting 1<sup>st</sup> October**



**Time: 9am-10am (5-7 yrs) & 10am-11am (7-9 yrs)**



**Location: Parkside Community Primary  
School**



**Contact: Niki Mostran,  
boostphysicaleducation@gmail.com**



St Mary the Virgin Church of England Primary School, Hartfield, East Sussex, TN7 4AA

Tel: 01892 770221 Email: [office@st-maryhartfield.e-sussex.sch.uk](mailto:office@st-maryhartfield.e-sussex.sch.uk) Website: [www.pioneerfederation.co.uk](http://www.pioneerfederation.co.uk)