



St Mary the Virgin Church of England CE Primary School

Hartfield East Sussex TN7 4AA

Executive Headteacher: Mr James Procter

Co-Heads of School: Mrs Becca Bastin and Mrs Abbie Hill

Email: office@st-maryhartfield.e-sussex.sch.uk



Term 2 Week 1

Friday 4th November

School Value and Weekly Reflection

Each term, we focus on a Christian Value with weekly reflection in assembly and in class.

We would like to develop this further by asking you to discuss the reflection of the week with your child(ren) at home.

This term, we are looking at Compassion and Peace.

Week One:



Compassion

I am only one, But still I am one.

I cannot do everything, but I can still do something;

And because I cannot do everything,

I will not refuse to do something that I can do.

Edward Everett Hale

Considering the above, think about a dream you have to make a difference to our world.

Attendance

The Pioneer Federation goal is an average attendance rate of 97%, recognising that each school day provides opportunities for learning, as well as social and emotional development. It is noticeable when students miss school as it impacts on their progress.



Please support us and your child by ensuring their attendance is a priority.

Whole school: week: **94.8%**

year: **95.5%**

Maple: 100%

Cherry: 92.4%

Willow: 95.4%

Lilac: 94.5%

Less than 94.9% - Red

95 to 96.4% - Amber

96.5 to 99.9% - Green

100% - Gold

Well done again to Maple Class, 100%!

Top Tips

Letters and emails home:

Whole School

- ◇ Remembrance 2022
- ◇ Parent Consultations
- ◇ Flu Vaccine reminder

Lilac Class

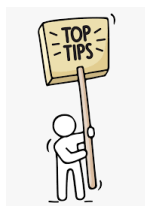
- ◇ Residential 2023
- ◇ T2 Homework and Spellings
- ◇ Y6 - Secondary Application reminder

Willow Class

- ◇ Lexia

School Clubs:

If you are interested in Football, Tennis, Keyboard, Singing, Strings, Drumming, Wildlife or Multi-Sports, there are places available in our school clubs.



Headteacher Award.

We have four Headteacher Awards this week:



Isla: for amazing consolidation of her RE learning in her final essay.



Bo: for amazing progress in understanding and independence in maths.



Marlie: for fantastic progress in writing—showing beautiful presentation, too.



Dylan: For amazing writing, using excellent vocabulary and brilliant handwriting.

If you need the newsletter, or any other school letter, to be in a different format, please speak with Mrs Funnell in the school office.

If you need help or support with access to any information, please also contact Mrs Funnell.



St Mary's Star Skills

"Skills for learning, skills for life"



Each week, one pupil from each class is identified for their 'star skills' development. Staff and other pupils share the skills they have noticed through the week, which are then recognised in Celebration Assembly on Fridays at 9:15am.

With so many Star Skills developing, we choose one each week to highlight in the Newsletter.

Eva: is constantly **Aiming High**, always pushing herself to the maximum and choosing 3 star work!

Dexter: has worked hard on his **Problem Solving**, challenging himself when multiplying by 100 and showing great tenacity when converting cm into m.

Wilf: has displayed truly impressive **Positivity**. He always works hard to stay positive and this week has really persevered in maths!

Finn: has shown fabulous **Listening Skills** this week, and can always tell you what sound he hears at the beginning of a word!

Well done to you all!

Next week, we will be looking at how Henry, Florence, Teagan and Harry (Yr 6) develop their skills.

October

November

5th: Open Morning - Prospective Parents
10:00am - 12noon

7th: Parent Questionnaires shared

8th: Parent Consultations 3:30pm - 6:00pm

9th: Service of Remembrance 9:30am

10th: Parent Consultations 3:30pm - 6:00pm

11th: Remembrance Day - 10:45am at the Memorial

11th: PTFA AGM - 3:15pm Larch Class

13th: Remembrance Service Church 10:45am

17th: Cherry Class Forest School (cancelled)

18th: Mufti Day - bottles for Tombola

19th: School Christmas Fair 12noon - 2:30pm

24th: Willow Class Forest School

December

1st: Lilac Class Forest School

7th: Nativity Performance

10:00am and 2:00pm

8th: Maple Class and Cherry Class Forest School

11th: Christingle Making

13th: Christingle Service in Church

14th: Christmas Dinner

16th: End of Term Service - 2:30pm

16th: Last Day Term 2

January

3rd: INSET Day

4th: 1st Day, Term 3

Sports Award

This week, sports awards go to

Brax: for excellent dribbling, close control and technique demonstrated during football!

Amelie: for much improved footwork and technique during sports hall jumps and races!

Florence: for great perseverance and control while dribbling the ball during football.

Henry: for excellent control demonstrated while aiming and throwing a beanbag!.

Well done to you all.



Reading Reward Scheme

Our Whole School Reading Reward Scheme will continue with your ongoing support required to tot up the minutes read at home. Please add additional comments in the reading records if required. Reading Records are checked each week and minutes counted for the House total.



This week's results:

Rother: 537 minutes

Teise: 1,283 minutes

Cuckmere: 530 minutes

Medway: 1,210 minutes

Well done, Teise!

PTFA News

St Mary's



The St Mary's Parent, Teacher and Friends Association work throughout each year to provide fun activities and events for the children (and adults), while raising money for the school, which in turn benefits the children again.

Annual General Meeting

The PTFA will be holding their AGM on Friday 11th November, 3.15pm in Larch Classroom. Everyone is welcome to this event to find out what they have been up to, what they have raised and how this has been spent over the last year. They will also give projections and plans for the coming year and vote in new Members and committee posts.

Again, it would be lovely if you could join them at this event.



Bingo Balls

Last year the PTFA started a new venture, their bingo ball game which proved so popular they are going to run it again this year.



How it works:

There are 90 balls and those who join are given a number for the year. Each month a ball is drawn in celebration assembly and the person with the corresponding number wins £50!

To take part:

An email needs to be sent to the ptfa (ptfahartfield@gmail.com) giving your name, contact number and connection with the school. To comply with GDPR, the email also needs to say:

I would like to purchase 1 bingo ball for the duration of the games and I have transferred the payment of £24 to the PTFA bank account. For the purposes of GDPR, I am happy for the PTFA and school to keep my details on file for the purpose of easily identifying the winner for the duration of the game.

Please send all payments to the PTFA bank account quoting 'bingo' as the reference.

CAF Bank HARTFIELD SCHOOL PTFA
Sort Code: 40-52-40 Account: 00060500

St Marys Christmas Fair



After being unable to run the Christmas Fair since 2019, the PTFA are very excited to be organising it once again.

The fair will be held on **Saturday 19th November**, between **12:00 noon and 2.30pm**.

Please put it in your diaries!

If you, or anyone you know, would like a stall it will cost £15 plus a donation to raffle.

Please get in touch with the PTFA to reserve a space.

Celebrations from Home

Zenny worked on an amazing construction of Tower Bridge, with a boat sailing underneath. Fabulous creativity, Zenny!



Celebrations from Home

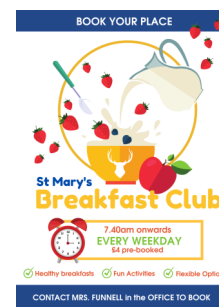
Joshua has been persevering with Karate Club and has been awarded his green belt! He was very pleased with himself and worked well to achieve this. Congratulations, Joshua!



School Clubs

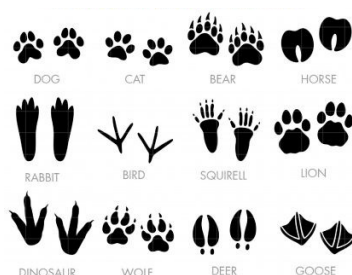
Breakfast Club runs from 7:40am to the beginning of school each day.

Places need to be pre-booked through the office so please call: **01892 770221**



Red Butler Music come in on Monday and Tuesday. If you are already signed up, they will contact you. If you would like to sign up (strings or drums), please call them: **01273 805666**

Mr D's Mixed Football Club (R-6) 3:30pm - 4:30pm. Please email the office to book: office@st-maryhartfield.e-sussex.sch.uk



Wildlife Explorers will continue on Tuesday lunch time for Y1 - Y6. We need to ensure that a clear register is provided to Mr and Mrs Rowberry so if you would like to arrange attendance please email the school office.

After school **Tennis Club** on Wednesdays 3.20pm - 4.20pm each week. Please contact the school office if you would like to join.



We have one space on Wednesdays during school time, for children to sign up to either **singing** or **keyboard** lessons.

Cost £10 per week, with Miss Rowberry

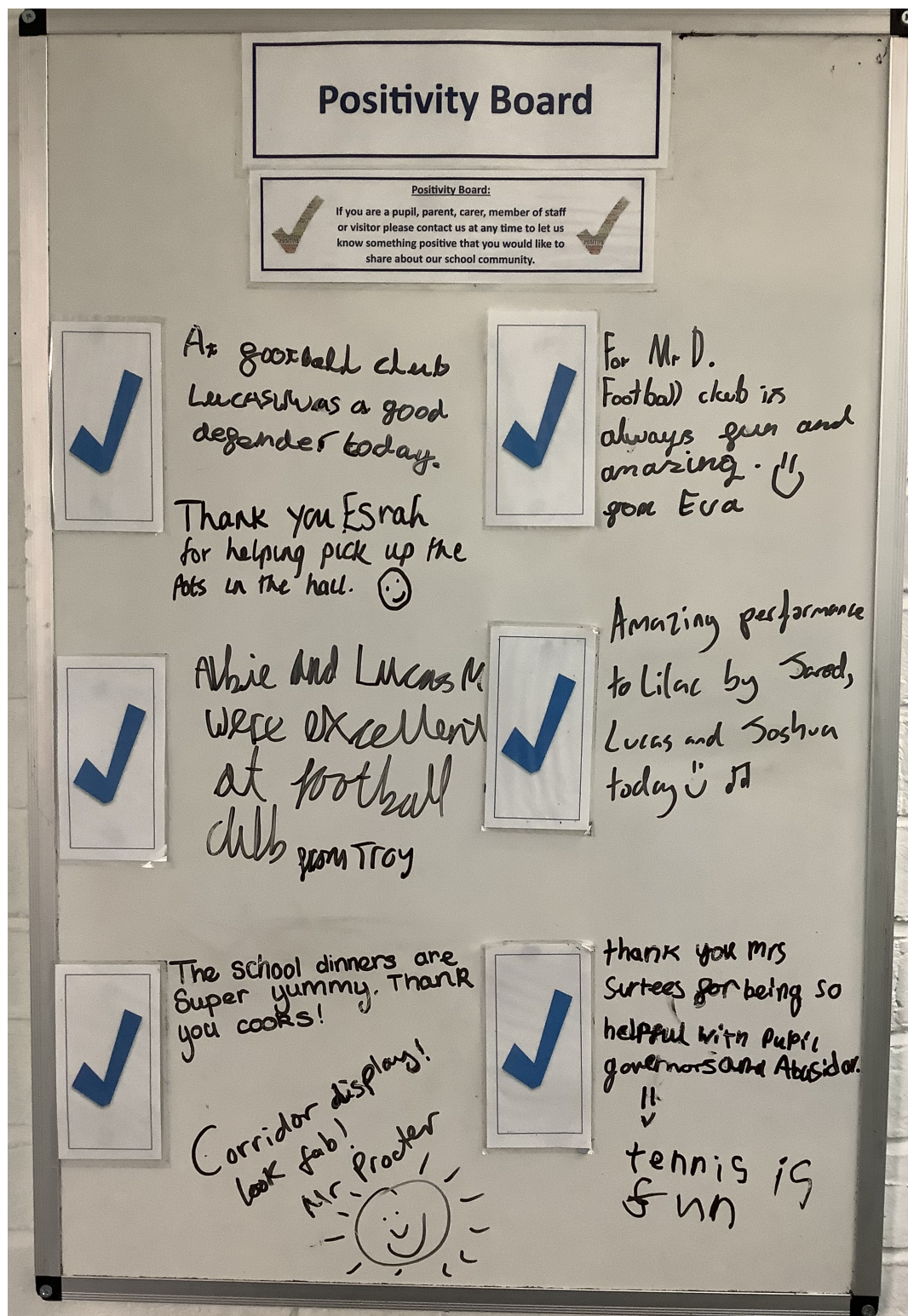
Mr D's Multi Sports Club (R to Y6) has returned on Fridays. Please email the office to book: office@st-maryhartfield.e-sussex.sch.uk



Positivity Board

This board enables us to write positive comments, or thoughts, from parents, carers, staff, children and visitors that they would like to share with others about the school, their classes, the children or events.

Please contact us at any time to let us know something that you would like to share. In the newsletter every week, there will be a picture to share and celebrate the positivity within our school.



Wellbeing Poster

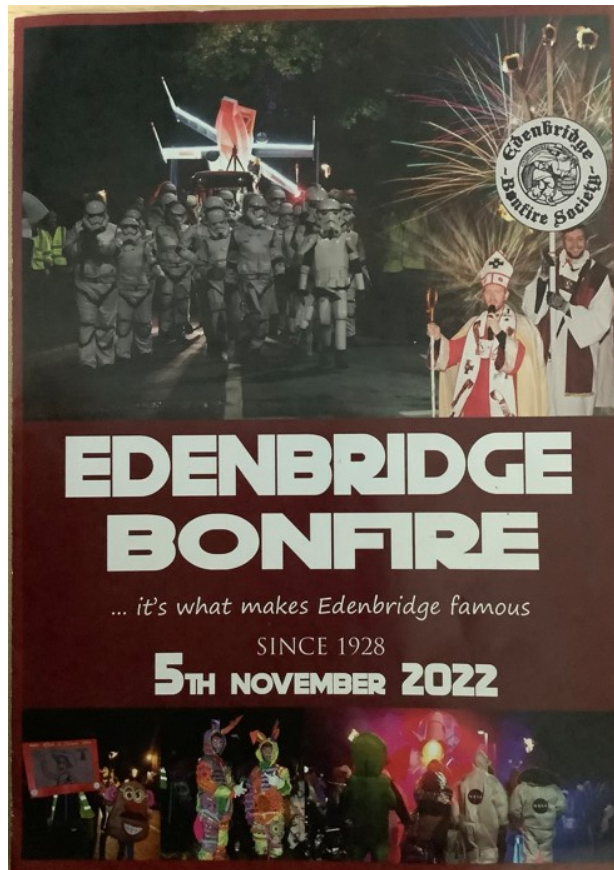
With Bonfire Night upon us, this week's wellbeing poster is a copy of a firework safety poster from [Plan Bee](#)



If you are attending a display or having a party, have fun, keep safe.



Opportunity

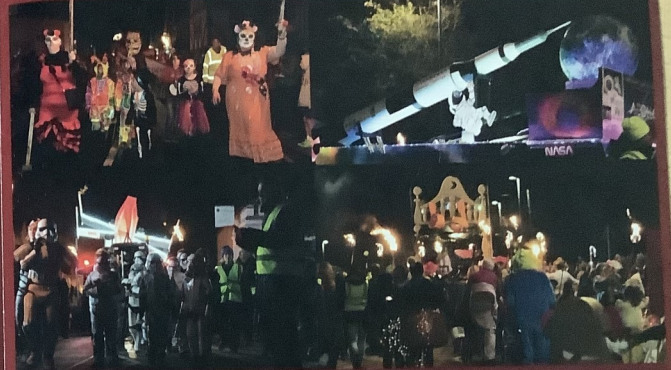


PROCESSION

*A unique way of celebrating bonfire!
Still going strong since our first parade in 1928*

The evening starts at 6.30pm with a torch lit procession.

See the Bonfire Bishop, his choirboys, and our Bonfire Society effigies - Guy Fawkes, poor Anne Boleyn with her head tucked underneath her arm, and General Wolfe. Over 1,000 flaming torches illuminate a procession of fantastic floats, walking parties, visiting Bonfire Societies, and marching bands.



FIREWORKS

Tickets:

Advanced tickets available from the following locations in Edenbridge:

Lucie Mason Flowers, Eden Emporium, The Swan Inn

Adult £7, Child £4

Tickets available on the night from our ticket booths at

Coomb Field & Mont St Aignan Way

Adult £9, Child £5

Family ticket on the night £25 (2 adults, 2 Children) (Adult 16 or over) Under 5 is free

Payments can be made by cash or card

Card payments will be contactless and we will accept most credit and debit cards.



Edenbridge Bonfire Society is a not-for-profit organisation, run entirely by volunteers, and has been raising money for charities for over 90 years! All the money collected in the buckets on the night goes to local charities.



St Mary the Virgin Church of England Primary School, Hartfield, East Sussex, TN7 4AA

Tel: 01892 770221 Email: office@st-maryhartfield.e-sussex.sch.uk Website: www.pioneerfederation.co.uk