



# St Mary the Virgin Church of England CE Primary School

Hartfield East Sussex TN7 4AA

Executive Headteacher: Mr James Procter

Co-Heads of School: Mrs Becca Bastin and Mrs Abbie Hill

Email: [office@st-maryhartfield.e-sussex.sch.uk](mailto:office@st-maryhartfield.e-sussex.sch.uk)



Term 2 Week 4

Friday 25th November

## School Value and Weekly Reflection

Each term, we focus on a Christian Value with weekly reflection in assembly and in class.

We would like to develop this further by asking you to discuss the reflection of the week with your child(ren) at home.

This term, we are looking at Compassion and Peace.

Week Four:



Peace

This week, we have read 'The Peace Book' by Todd Parr and discussed what our favourite description of peace is. Each pupil then created their own illustration and 'Peace is' sentence which will be used to create St Mary's very own Peace Book.

What would your family Peace Book look like?

## Top Tips

Letters and emails home:

**Year 6**

◇ Health Screening

**Maple Class**

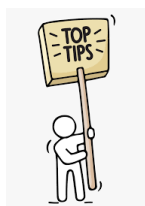
◇ Health Screening

**Cherry Class**

◇ Outside play donations

## School Nativity

The songs for our school nativity are now available on the [website](#). While we practice these within school, it would be great if you would also spend time listening and singing at home. Thank you.



## Attendance

The Pioneer Federation goal is an average attendance rate of 97%, recognising that each school day provides opportunities for learning, as well as social and emotional development. It is noticeable when students miss school as it impacts on their progress.



**Please support us and your child by ensuring their attendance is a priority.**

Whole school: week: **95.1%**

year: **96.3%**

**Maple: 98.2%**

**Cherry: 97.0%**

**Willow: 93.8%**

**Lilac: 97.1%**

**Less than 94.9% - Red**

**95 to 96.4% - Amber**

**96.5 to 99.9% - Green**

**100% - Gold**

**Well done, Maple Class!**

## Headteacher Award.

We have three Headteacher Awards to celebrate this week:



**Logan:** for amazing progress in independent writing in his Just So story. Great vocabulary!



**Ollie:** for super progress in writing of in-depth champion sentences



**Charlie:** for fantastic progress in writing, story planning and development.

**Well done to you all!**

If you need the newsletter, or any other school letter, to be in a different format, please speak with Mrs Funnell in the school office.

If you need help or support with access to any information, please also contact Mrs Funnell.



## St Mary's Star Skills

"Skills for learning, skills for life"



Each week, one pupil from each class is identified for their 'star skills' development. Staff and other pupils share their observations of the week, which are then recognised in Celebration Assembly on Fridays.

With so many Star Skills developing, we choose one each week to highlight in the Newsletter.

**Harry (Y5):** is developing amazing **Speaking Skills** and shared well with the class the project he had made with Mrs Carpenter.

**Immy:** has shown brilliant **Leadership skills**, being a very conscientious line leader and fabulous role model.

**Ollie:** is fabulous at **Aiming High!** He always goes above and beyond and has a well deserved Headteacher award this week!

**Bo:** has shown fantastic **Creativity** this week, making some beautiful new signs for our weather chart!

**Well done to you all!**

Next week, we will be looking at how Megan, Max, Lottie and Isaac develop their skills.

## December

1st: Lilac Class Forest School

1st: Community Café 2:00pm - 4:00pm

7th: Nativity Performance

10:00am and 2:00pm

8th: Maple Class and Cherry Class Forest School

9th: Health Screening - Maple Class and Y6

9th: Hartfield Live Nativity - 6pm The Croft

12th: Christingle Making

14th: Christingle Service in Church

14th: Full Governor Board Meeting

15th: Christmas Dinner

15th: Community Café 2:00pm - 4:00pm

16th: End of Term Service - 2:30pm

16th: Last Day Term 2

## January

3rd: INSET Day

4th: 1st Day, Term 3

5th: Maple Class - Forest School

5th: Community Café 2:00pm - 4:00pm

ADVENT



## Sports Award

This week, sports awards go to

**Ruby-Mae:** for much improved dribbling and control during football.

**Oliver O:** for excellent concentration and focus during football.

**Tuppence:** for great participation and following instruction during PE.

**Well done to you all.**



## Reading Reward Scheme

This week's results:

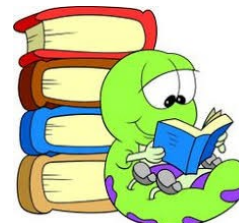
**Rother:** 1,112 minutes

**Teise:** 493 minutes

**Cuckmere:** 1,016 minutes

**Medway:** 647 minutes

**Well done, Rother!**



A special shout-out to House Captain Amelia for her 'Rother Readers' campaign which led them to victory this week.

**Well done, Amelia**



## Weekly Peek: Willow Class



In Science, we have been learning about Living Things and their Habitats. We used the internet to research a habitat in small groups. We then presented all of our learning on a life size habitat display. We were also ecologists and sorted living things into different groups.



In PSHE, we have been looking at why conflicts between friends and families may arise and have worked together to think of different solutions to solve these. On Monday, we discussed different conflict scenarios and worked as a group to think of ways the people involved could find a resolution. We really enjoyed working as a team and problem solving these tricky issues.

On Tuesday, Riley was able to talk Willow Class through the PowerPoint he has created on South Eastern Trains. He is very knowledgeable about them and we learnt many new facts! We were all impressed with how he had embedded the video links



into his work.



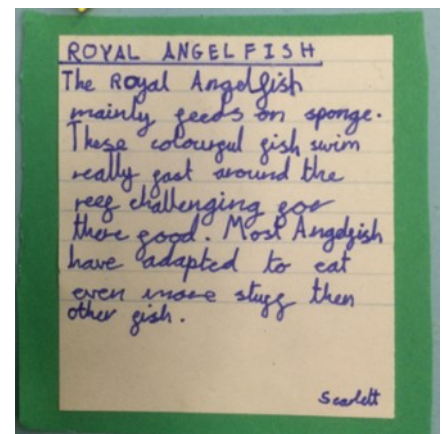
On Wednesday, our Welly Walk was cancelled because of the rain; so instead Rachel from High Weald Heroes showed us just how much history can be learnt through maps. Working in pairs, we were able to discover why the Romans came to Hartfield and what led the Anglo-Saxons here also. We found the



woods where Henry VIII went hunting and some of us were even able to find our own houses! We had a lot of fun creating different freeze frames that would show Hartfield through the ages. Here we are showing how the clay from Clay Woods was used to make gallipot medicine jars.



We have also fitted in some nativity rehearsals and have sung Save Our Sheep more times than perhaps we would like to count!





## **Forest School: Thursday 24th November**

Despite the wet and windy weather, Willow Class had a fantastic time in Forest School and once again enjoyed seeing the seasonal changes as autumn turns into winter. We focussed on history, geography and science curriculum links during our walk to the woods and the class talked about the railway line and went to show Miss Surtees where the old station was in Hartfield.



In science this term, Willow have been learning to:

- Recognise that living things can be grouped in a variety of ways
- Explore and use classification keys to help group, identify and name a variety of living things in their local and wider environment
- Recognise that environments can change and that this can sometimes pose dangers to living things.

Their Forest School experience supports the acquisition of these skills each and every session and the recent weather and the changing season has helped these skills today.



Each child had a stick for the journey and tried to collect as many different leaves, both shape, type and colour, to learn how to identify leaves and trees as they went.

They found some 'oak galls' created by gall wasps laying eggs. We had a look inside one gall and found a grub and then collected lots of oak galls, to dry out and try to make ink from them as they did in the middle ages.



The recent rain had made the meadows extremely muddy, making it potentially unsafe and too slippery underfoot, so Willow took another path to the woods and talked about the history of the railway line and the animals that might live along the Forest Way, after looking at the information sign on the track.

They had a look at the height of the river Medway to see the effect of the recent rains and how rivers and

flood plains react to weather.



In the woods, the children explored their own interests in the woods, exploring the site, the rope swings, digging in the wet ground and seeing how the flow of water could be diverted by them in the stream.

They balanced brilliantly on the slack line with sticks, build a den shelter with pegs and tarps and made some fantastic 'beezum' brushes from silver birch branches, as people did in the past.



## Wildlife Explorers

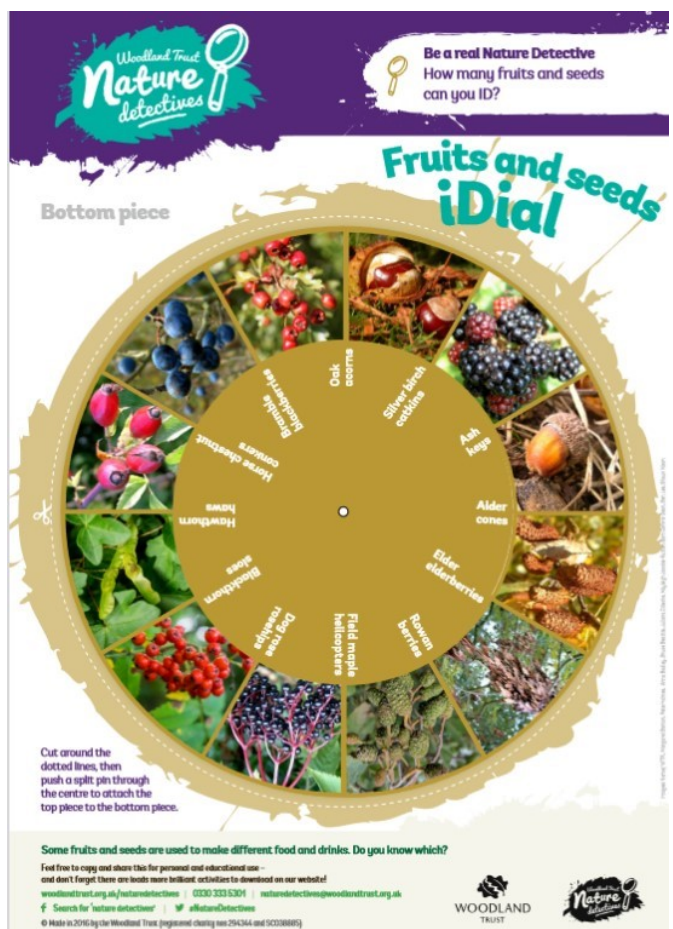
As Autumn brings the falling leaves and gold and red to those on the trees, the Wildlife Explorers looked at seeds and fruits.

They learnt that if something contains a seed it is a fruit, so the tomatoes, cucumber and bananas that club members cut open were all fruits as their seeds were easily seen.

The group also learned that some fruit, such as grapes have been altered by humans not to have seeds. In nature however, all fruit needs their seeds to be like tiny space ships, ready to grow into new plants when they land in a suitable place.

Our Explorers then cut open lots more fruits to look at the seeds and the room was filled with a wonderful smell of fruitiness!

Our last activity was to make a dial to enable us identify Autumn fruits, seeds and nuts at home which is a really useful tool now the leaves are falling as the wild fruits can be seen more easily.





### Pupil Governors

Many thanks to our Pupil Governors as they met last week to look at our School Vision Statement. They were all keen to contribute to the discussion and consider ways in which to make the statement reflect our school values and themselves as pupils.

They also chose which pupils were to receive the first LSF certificates of the academic year. It was wonderful to see such considerate and caring pupils being able to make their changes as Governors this school year.



### Parent Questionnaire Feedback

Thank you to all those parents who took the time to respond to the parent questionnaire. It's so useful to hear your suggestions and it helps us to improve.

Below are some follow-up points based on your feedback:

- On the school website, the curriculum maps for all year groups list what will be covered in each subject for each term. They detail the skills and knowledge we aim to teach the children in each subject and give further detail on which genres we will teach in Literacy and which areas of maths will be covered :

<https://pioneerfederation.co.uk/stmarys/curriculum-framework/>

- We report your child's progress and attainment to you every other term - Term 2, 4 and 6.
- Each term, each class sends home a newsletter detailing what they will learn in each subject and some suggestions for websites and questions for you to chat about with your child(ren).
- Thank you for all the club suggestions - we will look into them and be in touch when we find something.

If you have any questions or queries, please do not hesitate to speak to your child(ren)'s class teacher. They are available most days on the playground before and after school or you can contact the office to organise a meeting.



### PTFA Christmas Fair

A huge thanks to the PTFA, the volunteers who supported them and everyone attended or worked behind the scenes of the Christmas Fair which has raised in excess of **£1,500**. Amazing!

**Well done!** Thank You Thank You Thank You **Well done!**

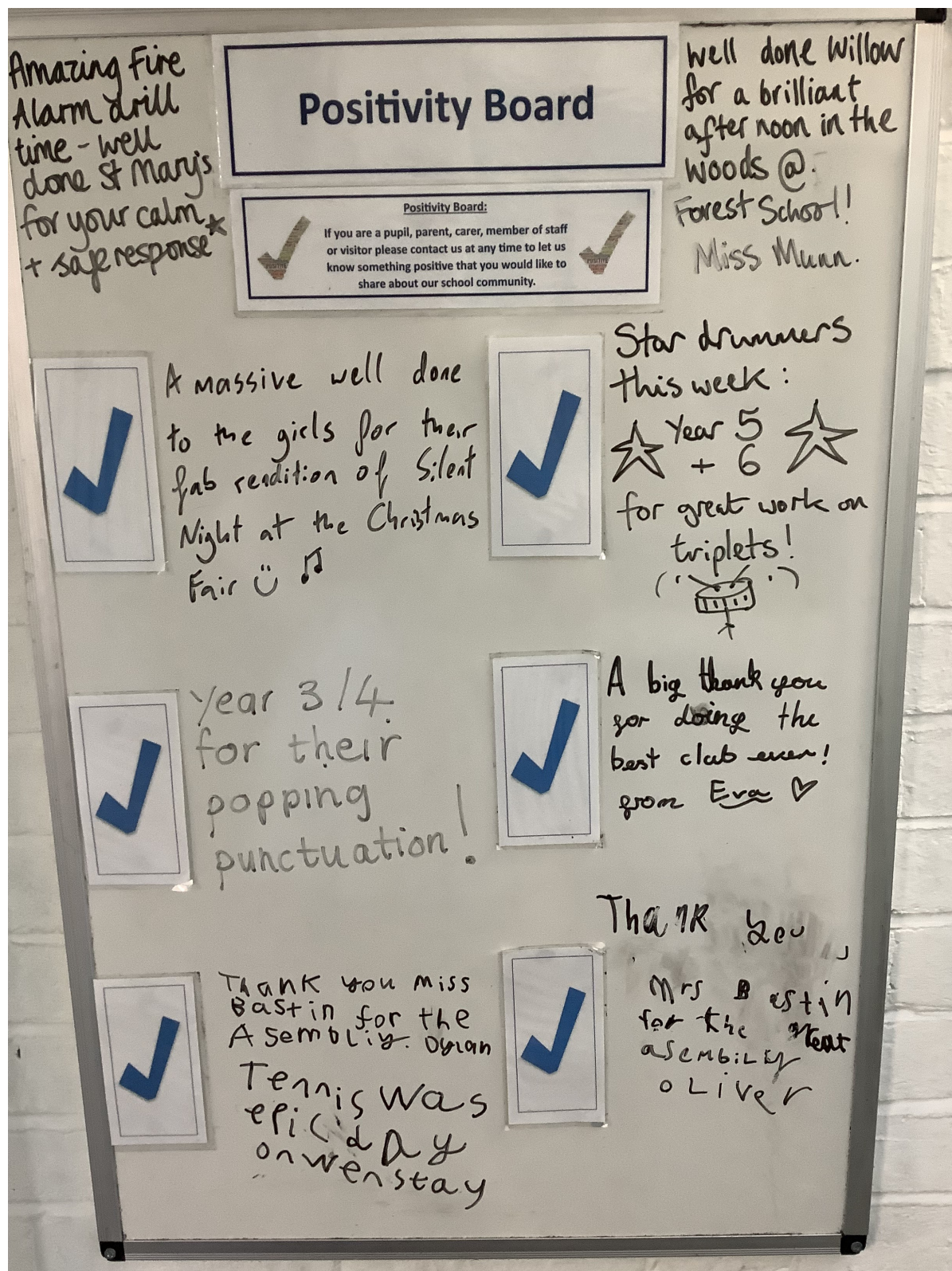
The PTFA have asked that if you still need to pay for your raffle tickets, Santa's grotto or 'new to you' school uniform, please do so.



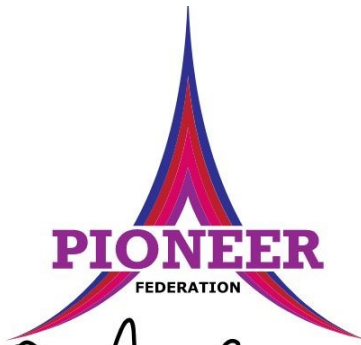
## Positivity Board

This board enables us to write positive comments, or thoughts, from parents, carers, staff, children and visitors that they would like to share with others about the school, their classes, the children or events.

Please contact us at any time to let us know something that you would like to share. In the newsletter every week, there will be a picture to share and celebrate the positivity within our school.





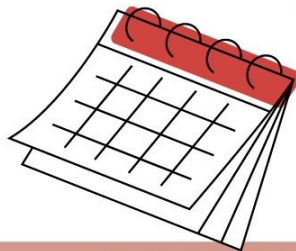


# Welcome

## PARENTS AND CARERS

### PARENT AND CARER COFFEE SESSIONS FOR MENTAL HEALTH AND WELLBEING.

Mrs Leahy (inclusion manager and SENCO) and Me and My Mind would like to invite you to join us for a drink and biscuit. Parents and carers from all Pioneer schools are welcome to all sessions!



**CONTACT**  
No booking required.  
Any questions, please email:  
Mrs Leahy  
[sleahy@pioneerfederation.co.uk](mailto:sleahy@pioneerfederation.co.uk)

### DATES FOR YOUR DIARY

- 11/10/22 - Park Mead - 2 to 3pm - Understanding anxiety
- 15/11/22 - Park Mead - 2 to 3pm - East Sussex School Health
- 17/11/22 - St Mary's - 9.05 to 10.05 - The Thrive Approach
- 1/12/22 - East Hoathly - 9.15 to 10.15 - The Thrive Approach
- 12/1/23 - St Marys - 9.05 to 10.05am - Open for Parents (Triple P)
- 24/1/23 - Park Mead - 2 to 3pm - Education Support, Behaviour and Attendance Service (ESBAS)
- 3/3/23 - Chiddingly - 2.15 to 3.15
- 21/3/23 - Park Mead - 9.15 to 10.15 - Education Support, Behaviour and Attendance Service (ESBAS)
- 25/4/23 - St Marys - 2 to 3pm - Open for Parents (Triple P)
- 16/5/23 - Park Mead - 9.15 to 10.15 - Adult Mental Health Week
- 15/6/23 - St Marys - 9.05 to 10.05am - Open for Parents (Triple P)
- 4/7/23 - Park Mead - 9.15 to 10.15 - Enjoying the summer holidays





## Wellbeing

Healthy Habits is a free 8 week programme encouraging families to eat well and get active together and is aimed at children aged 4 to 11 looking to achieve a healthy weight.



If you would like support to eat well and get more active as a family, come and join us for a free, fun 8 session programme. Our next groups start ready for the New Year with more opportunities to join throughout the school year!

Interested? Want to find out more?

**Give us a call, visit our website for further details:**

Tel: 0300 123 4062

Website: <https://www.eastsussexchildren.nhs.uk/healthy-habits/>

## St Mary's Christmas Lunch

The school will be indulging in our Christmas Lunch on Thursday 15th December. Forms will be sent out next week and payment will need to be made through ParentPay.







All age service

*December 11th 2022*

*at*

*St Mary's Church*

*9.30am*





St Mary's Church in Hartfield, warmly  
welcomes you to  
join  
St Mary's school  
for a

## Christingle Service

14<sup>th</sup> December 2022

From

9.30am – 10.30am





# Hartfield Live Nativity

Friday 9<sup>th</sup> December 2022  
Starts 6pm on The Croft



**Come along to Hartfield's very special and popular Live Nativity!**

- Join the crowd following Mary and Joseph through the village knocking on doors trying to find room at the inn.
- Angels, shepherds, wise men, "donkey", camels and carols.
- Procession ends in the church in a beautiful and heart warming nativity scene with baby Jesus.
- Refreshments in the church.

**If your child would like to join in as an angel or shepherd**  
contact Alison Berry 07763 188538, [ajberryartist@gmail.com](mailto:ajberryartist@gmail.com)

**Everyone welcome – a lovely way to start Christmas!**



St Mary's Church, Hartfield



**HARTS** .....Life is for Living  
Hartfield Arts and Theatre Society