



St Mary the Virgin Church of England CE Primary School

Hartfield East Sussex TN7 4AA

Executive Headteacher: Mr James Procter

Co-Heads of School: Mrs Becca Bastin and Mrs Abbie Hill

Email: office@st-maryhartfield.e-sussex.sch.uk



Term 2 Week 7

Friday 16th December

School Value and Weekly Reflection

Each term, we focus on a Christian Value with weekly reflection in assembly and in class.

We would like to develop this further by asking you to discuss the reflection of the week with your child(ren) at home.

This term, we are looking at Compassion and Peace.

Week Six:



Compassion

Having compassion can mean helping those less fortunate than us and recognising how we can help them.

As a family think about writing a wish for people less fortunate with an idea of how you can help them this Christmas time.

Our Prayer:

Hold each other close and find peace, strength and love over this holiday season.



Christmas Tree

Our thanks are once again extended to Mrs Emery and Sussex Trees in Lindfield for our beautiful Christmas tree.



Top Tips

Emails and letters sent home this week:

Whole School

- Christingle
- Guidance re Scarlet Fever and Group A Streptococcus
- Tennis Club (selected pupils)
- Snow arrangements
- Christmas Jumpers

Willow Class

- Swimming (selected pupils)

Cherry Class

- 'Treat' on Friday



Have a fabulous Christmas, enjoy the break and we look forward to seeing you in the New Year.

If you need the newsletter, or any other school letter, to be in a different format, please speak with Mrs Funnell in the school office.

If you need help or support with access to any information, please also contact Mrs Funnell.



St Mary's Star Skills

"Skills for learning, skills for life"



Each week, one pupil from each class is identified for their 'star skills' development. Staff and other pupils share their observations of the week, which are then recognised in Celebration Assembly on Fridays.

With so many Star Skills developing, we choose one each week to highlight in the Newsletter.

up in class more to share his amazing ideas.

Joseph: has shown amazing **Creativity** this week, designing his work on habits carefully and his presentation was fantastic!

Bella: has been **Aiming High** this week, working hard to write sentences independently.

Sami: has shown incredible **Listening Skills** this week, listening intently to his friends sharing their news of snow day, and was able to remember much of what they said!

Well done to you all!

The first week of next term, we will be looking at how Kate, Ruby-Mae, George and Ruby develop their skills.

Celebrations from Home

Mr Procter and Mrs Fry used their **growth mindset** to get through the 10mile Mince Pie race last weekend!

Well done to you both!



St Mary's



Our lovely PTFA continue their work behind the scenes so don't forget to have the School on your **Amazon Smile** account, be signed up to '**Easy Fund Raising**', add any **clothes** to our collection bin, or to pop us onto any re-orders for **Stikins** labels! The PTFA is always open to **new volunteers**!

December

16th: Last Day Term 2

January

3rd: INSET Day

4th: 1st Day, Term 3

5th: Maple Class - Forest School

5th: Community Café 2:00pm - 4:00pm

10th: Willow Class - Swimming

12th: Cherry Class - Forest School

17th: Willow Class - Swimming

18th: Willow Class - Welly Walk

19th: Willow Class - Forest School

19th: Community Café 2:00pm - 4:00pm

24th: Willow Class - Swimming

26th: Lilac Class - Forest School

28th: PTFA Jumble Sale

31st: Willow Class - Swimming

ADVENT



Opportunity

Open for Parents offer support with various online courses for parents. They say:

"Another new year and a fresh new start for us all. How is your child settling into their new term? What resolutions have you set yourself as a parent this year? Maybe you would like help with mealtimes or setting better bedtime routines? Whether it is support with screen time squabbles, getting your child to listen to you, building your teens survival skills and resilience or managing anxiety that you could use some tips on, the Parenting Team has got you covered! We are here to support you with our variety of online courses, each with specific tips on how you can deal with the most common behaviour problems; and best of all, these evidence-based methods have already been successful in supporting families worldwide through times of crisis. So, you don't have to do it alone; we'll get through this together. Parents and carers can access as much or as little as they like, and just small changes will make a big difference! The Parenting Team use Microsoft Teams which is free to download and accessible from phones, tablets, and laptops! Just simply choose the support you would like to access, email with which course you would like to attend to EH.0-19parentingteam@eastsussex.gov.uk Once you have joined the discussion you can choose to have your microphone and camera either on or off (whichever you are more comfortable with), but we do encourage you to try some face to face with the other parents as the more you engage, the more supported and confident you will feel! "The best inheritance a parent can give his children is a few minutes of his time each day."

For ease, we have popped their information on to the [school website](#) so please take a look as there may be something of interest for you!

Parenting Guide | East Sussex What's On – Jan, Feb, March 2023

Early Help 0-19
Respect | Partnership | Strength



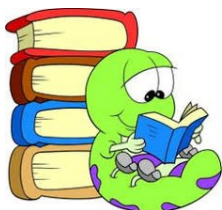
Reading Reward Scheme

Our Whole School Reading Reward Scheme will continue with your ongoing support required to tot up the minutes read at home. Please add additional comments in the reading records if required. Reading Records are checked each week and minutes counted for the House total.

This week's results:

Rother: 85 minutes
Teise: 75 minutes
Cuckmere: 1,040 minutes
Medway: 185 minutes

Well done, Cuckmere!



Attendance

The Pioneer Federation goal is an average attendance rate of 97%, recognising that each school day provides opportunities for learning, as well as social and emotional development. It is noticeable when students miss school as it impacts on their progress.

Please support us and your child by ensuring their attendance is a priority.

Whole school: week: 80.1%
year: 93.9%

Maple: 89.8% **Cherry: 67.1%**
Willow: 92.7% **Lilac: 78.1%**
Less than 94.9% - Red **95 to 96.4% - Amber**
96.5 to 99.9% - Green **100% - Gold**

Well done, Willow Class!



Wellbeing

School Clubs

We plan to continue all of our extra curricular clubs within school in the New Year.

Breakfast Club will be starting from the first day back (Wednesday 4th January) and runs from 7:40am to the beginning of school each day.

Places need to be pre-booked through the office so please call: **01892 770221**



Red Butler Music will come in on Monday and Tuesday. If you are already signed up, they will contact you. If you would like to sign up (strings or drums), please call them: **01273 805666**

Mr D's Mixed Football Club (R-6) will re-convene on Mondays. Please email the office to book: office@st-maryhartfield.e-sussex.sch.uk



Wildlife Explorers will continue on Tuesday lunch time for Y1 - Y6. We need to ensure that a clear register is provided to Mrs Rowberry so if you would like to arrange attendance please email the school office.

Mr D's Multi Sports Club (R to Y6) will return on Fridays beginning 6th January. Please email the office if you would like a place: office@st-maryhartfield.e-sussex.sch.uk



After school **Tennis Club** on Wednesdays. Again, this will be if sufficient children are interested in joining. 3.20pm - 4.20pm each week. Jon Prenelle, Director of Kent & Sussex Tennis, LTA Level 4, PTR Pro, USPTA Pro, RPT Pro Coach

Phone/whatsapp: 07464972681/07495368571,

Email: kentandsussextennis@outlook.com Website: www.kentandsussextennis.co.uk

Please email the school office, contact Red Butler or Jon Prenelle, if you would like to sign up.

Thank you.

Snow Day

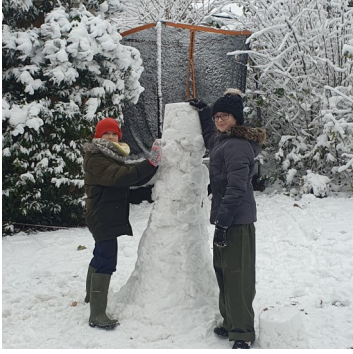
Following a 'little bit of snow' on Sunday, school was closed on Monday for what is affectionately being called a 'Snow Day'. As ever, our children 'dug deep' and enjoyed every moment. Thank you to everyone who sent in their photos:



St Mary the Virgin Church of England Primary School, Hartfield, East Sussex, TN7 4AA

Tel: 01892 770221 Email: office@st-maryhartfield.e-sussex.sch.uk Website: www.pioneerfederation.co.uk

Snow Day - continued



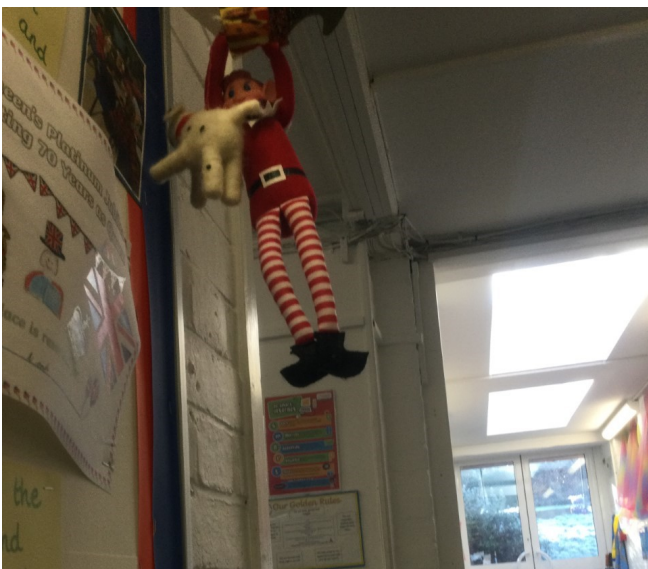
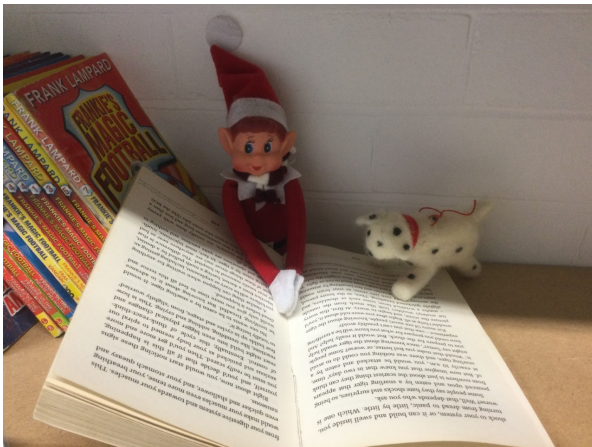
St Mary the Virgin Church of England Primary School, Hartfield, East Sussex, TN7 4AA

Tel: 01892 770221 Email: office@st-maryhartfield.e-sussex.sch.uk Website: www.pioneerfederation.co.uk

St Mary's Elf

Through December, we have had an elf moving around the school with the children excited to spot him (with his dog) each day.

Jacob (Y3) has taken photos for us to share:



St Mary the Virgin Church of England Primary School, Hartfield, East Sussex, TN7 4AA

Tel: 01892 770221 Email: office@st-maryhartfield.e-sussex.sch.uk Website: www.pioneerfederation.co.uk

Opportunity

Autism and Demand Avoidance

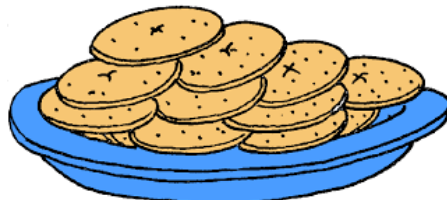
What: a coffee morning covering the topic of Autism and Demand Avoidance

When: Wednesday 11th January 9:00am - 10:30am

Where: Park Mead Primary School, Upper Dicker

Who: Invitation to all parent and carers within Pioneer Federation

How: Class+ supported by Sian Leahy (Inclusion Manager)



Awareness

East Sussex County Council have developed a dedicated webpage giving a range of information to support families if they are struggling or worrying about the cost of living increases in this area.

Please visit: [Support with the cost of living](https://www.eastsussex.gov.uk/support-with-the-cost-of-living)
[| East Sussex County Council.](https://www.eastsussex.gov.uk/support-with-the-cost-of-living)



Christmas Treat

Evalyn and Cece have been practicing hard with Miss Rowberry to develop their singing skills which they demonstrated with a beautiful performance earlier this week.

**Well done,
Cece and
Evalyn!**



Opportunity

Training and support services for families of children struggling with anxiety



Child Therapy Service
Resources - Training - Support

9th December 2022



CHRISTMAS TIME

Training this month is focused on Christmas and supporting Neurodivergent Children at home and school. We will focus on routines, transition, sensory, and emotional needs.

• 12th December, 6pm - £5

COFFEE MORNINGS

We now run **two coffee mornings** each month. One to support families of children with a PDA Profile, the second for families of children that are struggling with emotionally based school avoidance. Both are very relaxed and very supportive.

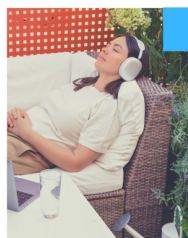


Our service and Tom Crellin from PDA Sussex are joining forces - with great events being planned for 2023 to support PDA families.

Tom is an experienced trainer and consultant. He has run a number of peer support groups for PDA and is a senior trainer for the PDA Society. Tom has been involved in volunteering all of his life and has volunteered in the healthcare sector and in home education. His daughter is a PDAer and he is passionate about improving the lives of PDAers.

• Run monthly - FREE

RELAX



Our **compassion fatigue sessions** are a great opportunity to release emotional overwhelm and let go of anything that is weighing you down.

The sessions include bilateral work - to release emotions held in the body alongside tapping sequences to calm the system.

It's a whole-brain integrated approach to removing past triggers and allow the system to heal. When it's free from the past - it can be present for the future.

• Run monthly - £5

1:1 SESSIONS

Our private coaching sessions continue to offer **emotional regulation support** to dysregulated young people.

They are focused on **whole-brain integration** strategies that are taught to them - so that they have a toolkit of techniques to use when they need to.

We don't have to talk about it - we just release it, achieve inner balance, and back in control!



WWW.CHILDTHERAPYSERVICE.ORG.UK

St Mary the Virgin Church of England Primary School, Hartfield, East Sussex, TN7 4AA

Tel: 01892 770221 Email: office@st-maryhartfield.e-sussex.sch.uk Website: www.pioneerfederation.co.uk

Well Being Poster

As we head towards the Christmas season, our wellbeing poster this week looks at the true meaning of Christmas as it gives us hope for the future, strength through our Lord, and peace and love through Jesus who was sent as a light into this world to save us all.



Holland Litho [tell us](#) :

The true meaning of Christmas is love. John 3:16-17 says, "For God so loved the world that he gave his one and only Son, that whoever believes in him shall not perish but have eternal life. For God did not send his Son into the world to condemn the world, but to save the world through him."

The true meaning of Christmas is the celebration of this incredible act of love.

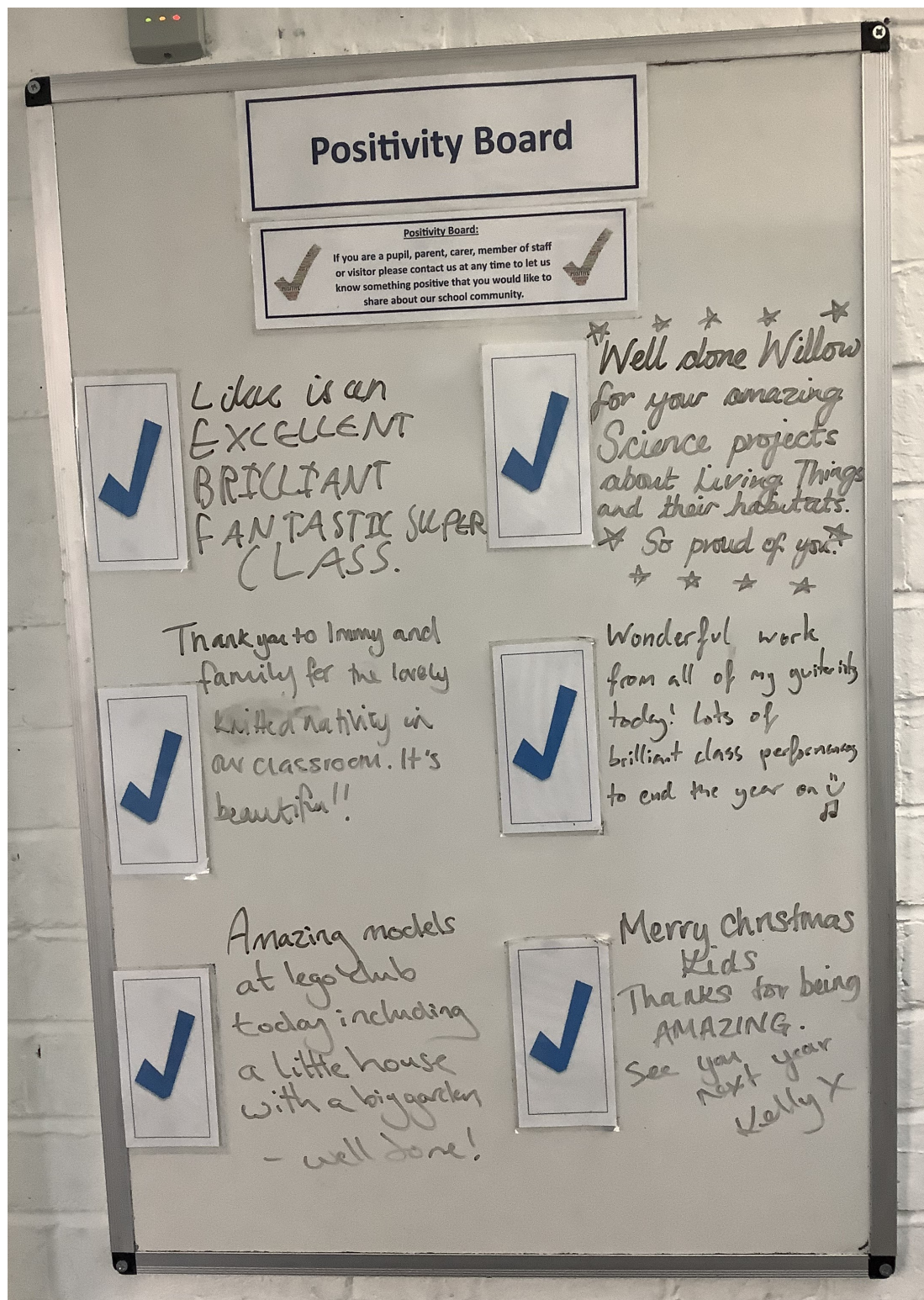
So over this Christmas break, take time to show the family how much you love them, have the strength to slow down the pace to enjoy all that you have, and find peace in the knowledge that God loves us all.



Positivity Board

This board enables us to write positive comments, or thoughts, from parents, carers, staff, children and visitors that they would like to share with others about the school, their classes, the children or events.

Please contact us at any time to let us know something that you would like to share. In the newsletter every week, there will be a picture to share and celebrate the positivity within our school.



Opportunity

Pioneer Federation currently has a vacancy for a Parent Governor.

Please see below and contact the school office before 3rd January, if this is an opportunity you would like to apply for.



Chair Of Governors: Mr Alan Brundle
Executive Headteacher: Mr James Procter
Email: head@pioneerfederation.e-sussex.sch.uk
Email: chiddinglyoffice@pioneerfederation.co.uk
easthoathlyoffice@pioneerfederation.co.uk
office@st-maryhartfield.e-sussex.sch.uk
office@parkmead.e-sussex.sch.uk

Wednesday 6th December 2022

Dear Parent/Guardian,

Parent Governor Vacancy

We currently have a vacancy for one **parent governor appointment** for the **Pioneer Federation Governing Body** and are looking for volunteers/nominations to be put forward for the role.

If you wish to stand for election as a parent governor, please complete the nomination form on the reverse of this letter and return to your school office by **9.00am on Thursday 4th January 2023** together with the signed Declaration of Eligibility Form (as attached).

Parent Governors play a very important role in keeping the governing body aware of the views of parents and the local community. They are a vital part of our team and we hope that there are parents willing to give their time and commitment to this important role. The ideal candidate will be passionate about **all** the Federation schools and the community and will be highly committed to working as a governor to support the vision and strategic direction of the Federation.

Please be aware of the following:

In accordance with the School Governance (Constitution) Regulations 2003 a person is disqualified from election as a parent governor if:

- they work at the school for more than 500 hours in any school year (i.e. for more than one third of the hours of a full time equivalent);
- they are an elected member of the Local Authority.

If two or more nominations are received, we shall arrange for parents to receive ballot papers which will include the candidates' election statements.

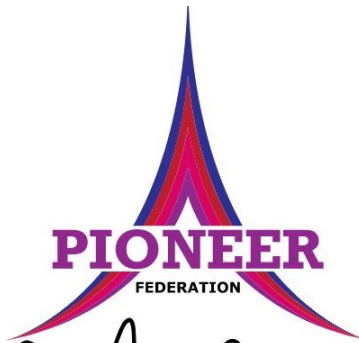
If you are interested in this opportunity to become a member of the Governing Body, you might find it helpful to talk to James Procter, Executive Headteacher. Alternatively you can view East Sussex County Council's website about Governors and their roles at:

<https://www.eastsussex.gov.uk/education-learning/support-for-teachers/school-governors/governors>

Yours sincerely,

James Procter
Executive Headteacher

Alan Brundle
Pioneer Chair of Governors

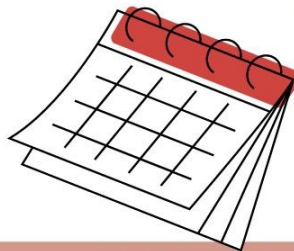


Welcome

PARENTS AND CARERS

PARENT AND CARER COFFEE SESSIONS FOR MENTAL HEALTH AND WELLBEING.

Mrs Leahy (inclusion manager and SENCO) and Me and My Mind would like to invite you to join us for a drink and biscuit. Parents and carers from all Pioneer schools are welcome to all sessions!



CONTACT
No booking required.
Any questions, please email:
Mrs Leahy
sleahy@pioneerfederation.co.uk

DATES FOR YOUR DIARY

- 11/10/22 - Park Mead - 2 to 3pm - Understanding anxiety
- 15/11/22 - Park Mead - 2 to 3pm - East Sussex School Health
- 17/11/22 - St Mary's - 9.05 to 10.05 - The Thrive Approach
- 1/12/22 - East Hoathly - 9.15 to 10.15 - The Thrive Approach
- 12/1/23 - St Marys - 9.05 to 10.05am - Open for Parents (Triple P)
- 24/1/23 - Park Mead - 2 to 3pm - Education Support, Behaviour and Attendance Service (ESBAS)
- 3/3/23 - Chiddingly - 2.15 to 3.15
- 21/3/23 - Park Mead - 9.15 to 10.15 - Education Support, Behaviour and Attendance Service (ESBAS)
- 25/4/23 - St Marys - 2 to 3pm - Open for Parents (Triple P)
- 16/5/23 - Park Mead - 9.15 to 10.15 - Adult Mental Health Week
- 15/6/23 - St Marys - 9.05 to 10.05am - Open for Parents (Triple P)
- 4/7/23 - Park Mead - 9.15 to 10.15 - Enjoying the summer holidays

