



# St Mary the Virgin Church of England CE Primary School

Hartfield East Sussex TN7 4AA

Executive Headteacher: Mr James Procter

Co-Heads of School: Mrs Becca Bastin and Mrs Abbie Hill

Email: [office@st-maryhartfield.e-sussex.sch.uk](mailto:office@st-maryhartfield.e-sussex.sch.uk)



Term 3 Week 2

Friday 13th January

## School Value and Weekly Reflection

Each term, we focus on a Christian Value with weekly reflection in assembly and in class.

We would like to develop this further by asking you to discuss the reflection of the week with your child(ren) at home.

This week, we are looking at 'supporting others.' Our value for the rest of the term is Courage,



**World  
in Need**

**Supporting Others**

We are going to support the charity World In Need to help those who do not have as much as we do. As a school each class will be thinking of some ideas of how they could raise money for this charity?

God loves to hear us pray for others, as a family what could you pray for World in Need?

## Headteacher Award

We have five Headteachers' Awards to celebrate this week:



**Finn:** for amazing independent sentence writing.



**Ida:** for independent champion sentence writing - wow!



**Amelia:** for fantastic science work all about climate change, very thoughtful and really interesting.



**Joseph:** for producing a brilliant scientific comic strip, all about the dangers of climate change - well done!



**Joshua:** for amazing improvement in handwriting and stamina for writing.

**Well done to you all!**

## Top Tips

Emails and letters sent home this week:

### **Lilac Class**

- Photo Permission
- Homework T3

### **Willow Class**

- Welly Walk

### **Cherry Class**

- Class Trip

### **Maple Class**

- Class Trip
- Bicycle Week

### **Whole School:**

- Autism and Demand Avoidance
- Smart Watches



## Attendance

The Pioneer Federation goal is an average attendance rate of 97%, recognising that each school day provides opportunities for learning, as well as social and emotional development. It is noticeable when students miss school as it impacts on their progress.



**Whole school: week: 97.6%**  
**year: 94.0%**

**Maple: 92.7%**      **Cherry: 96.4%**

**Willow: 99.1%**      **Lilac: 99.3%**

**Less than 94.9% - Red**      **95 to 96.4% - Amber**  
**96.5 to 99.9% - Green**      **100% - Gold**

**Well done, Lilac Class!**

If you need the newsletter, or any other school letter, to be in a different format, please speak with Mrs Funnell in the school office.

If you need help or support with access to any information, please also contact Mrs Funnell.



## St Mary's Star Skills

"Skills for learning, skills for life"



Each week, one pupil from each class is identified for their 'star skills' development. Staff and other pupils share their observations of the week, which are then recognised in Celebration Assembly on Fridays.

With so many Star Skills developing, we choose one each week to highlight in the Newsletter.

**Kate:** has shown brilliant **teamwork** this week, coming up with fun games to play at break time.

**Ruby-Mae:** demonstrated amazing **positivity** this week, having a great attitude to the new swimming sessions and encouraging other who were feeling overwhelmed.

**George:** has been fabulous at **problem solving** this week, focussing really hard to solve problems involving number lines to 20!

**Ruby:** has been very interested in creating junk models this week, having some fantastic **creative** ideas and working well to model and shape.

Next week, we will be looking at how Finlay, Nicco, Thomas and Alfred develop their skills.

### Sports Award

This week, sports awards go to

**Amelia (Y6):** for a great range of movement and control during gymnastics.

**Amelia (Y3):** for excellent co-ordination and control demonstrated during gymnastics, especially leaps!

**Lois:** for excellent focus and control whilst demonstrating a wide range of movement in gymnastics.

**Alfred:** for fabulous leaping, jumping and range of movements during gymnastics.



**Well done to you all!**



### Reading Reward Scheme

Our Whole School Reading Reward Scheme will continue with your ongoing support required to tot up the minutes read at home. Please add additional comments in the reading records if required. Reading Records are checked each week and minutes counted for the House total.



This week's results:

**Rother:** 690 minutes

**Teise:** 1,256 minutes

**Cuckmere:** 1,833 minutes

**Medway:** 1,232 minutes

**Well done, Cuckmere!**

### Dates for your Diary

#### **January**

17th: Willow Class - Swimming  
18th: Willow Class - Welly Walk  
19th: Willow Class - Forest School  
19th: Community Café 2:00pm - 4:00pm  
24th: Willow Class - Swimming

26th: Toast for World in Need - 10:30am  
26th: Lilac Class - Forest School  
31st: Willow Class - Swimming

#### **February**

2nd: Maple Class - Forest School  
2nd: Lilac Class Assembly - 9:15am  
2nd: Community Café 2:00pm - 4:00pm  
8th: Online Safety Day  
9th: Mufti Day - bring £1, wear non uniform  
9th: Maple Class - Forest Row Fire Station  
9th: Cherry Class - Hands on History  
9th: Willow Class Assembly - 9@15am  
9th: PTFA Disco 3:30pm  
9th: FGB Meeting  
10th: Last Day Term 3  
NO SCHOOL  
20th: First Day Term 4  
20th: Prayer Meeting - 2:45pm in Church  
22nd: Ash Wednesday Service Church  
9:30am  
23rd: Maple Class - Forest School  
23rd: Willow Class Bake Sale

### Key Stage 2: Lexia

We are excited about the fantastic progress that many children are making when using the Lexia programme and have now been able to allocate **all KS2** children a Lexia account.



With the excellent progress being made, we would like to ask that **all KS2 children now complete at least 20 minutes of Lexia as part of their homework.**

This time can be counted towards their reading minutes and should be recorded in their reading log. It is very clear that the children who are using the programme consistently are making impressive leaps in their learning. Some have improved their reading age by two years since September!

Lexia can be used on a tablet or laptop and when first logging in you will be asked for the teachers email address.

Please use [asurtees@st-maryhartfield.e-sussex.sch.uk](mailto:asurtees@st-maryhartfield.e-sussex.sch.uk).

All children should know their log in details, if not we will happily print these out for you.



### Toast for WIN

To further encourage the children at St Mary's to consider others and the world



around them we are excited to announce that as a school, St Mary's will now be supporting World in Need

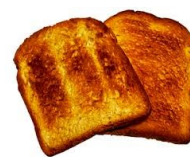
**World in Need (WIN)** is a Christian charity whose mission is to feed the hungry and help the poor. They currently work in ten countries across the world including Kenya, The Philippines and India.

As a school, throughout the year we will be raising funds to support their feeding programme, which seeks to offer children a well-balanced and nutritional meal daily.

Each month, our Pupil Governors will hold a 'Toast for WIN'



session where they will offer toast and jam to all children in school in return for a small donation. We suggest 50p, but anything from 10p to £1 would be fantastic.



These sessions will happen during morning break time and will happen on the third or fourth Thursday of the month (signposted in newsletter).

Our Pupil Governors will also be supporting World in Need by visiting their headquarters in Crowborough and assisting with some administrative tasks throughout the year.

If you would like to know more: [worldinneed.org.uk](http://worldinneed.org.uk)

### School Clubs

**Red Butler Music** come in on Monday and Tuesday to teach guitar, ukulele and drumming. This term they are offering a promotion for their 'strings' lessons and are offering a free trial lesson for your children to try.

If you would like to take advantage of this opportunity please call them: **01273 805666**



### School Clubs

After school **Tennis Club** started again this week and are looking for new members. Currently there are five on role and we need one more to ensure it is viable to continue. Running from 3.20pm - 4.20pm on Wednesdays each week, the children have a fantastic time earning 'pegs' towards a termly prize!

If you are interested in joining please contact Jon Prenelle, (Director of Kent & Sussex Tennis, LTA Level 4, PTR Pro, USPTA Pro, RPT Pro Coach) by phone/whatsapp: 07464972681/07495368571, or by email: [kentandsussextennis@outlook.com](mailto:kentandsussextennis@outlook.com)



## **Forest School - Thursday 12th January**

On the way to the woods the Cherry class spent time observing which animals had made footprints in the mud along the track. They spotted some holes, which they thought could be badgers dens and some smaller ones which they speculated could be mice or rabbit homes.

Then the class had a go at learning how to identify different animals from their footprints by counting their toes. Badgers – 5, foxes - 4, deer - 2. They used flour, sieves and stencils to create their own animal foot prints on the woodland floor.



The class were great at spotting interesting features of their environment on the walk to the woods. They found lots of nature treasure - oak wasp galls, a birds egg, lichen, moss, crab apples, acorns which were pink and sprouting and lots of mud!

Cherry Class are thinking about the '**Great Fire of London**' as their learning journey this term, so today they watched how a

real fire spreads. In the woods they watched as some sparks made a fire and observed it spread quickly on cardboard boxes, as it did in London in 1666. They talked about fire safety and what a fire needs to burn; fuel, spark, air. They discussed the properties of the materials that the houses were built with, how they were so close together and how this led to the spread of the fire. They watched as we used some water to extinguish the fire completely at the end.



Some of the children then had a go at using the fire strikers to try to create sparks independently. It took a lot of determination and perseverance to succeed, so it was great to see such dedication from the children.



After their great fire, Cherry Class set off exploring the woods in the drizzle.

Some children took to the stream, where there was much excitement at the flow of the river due to the recent rain. They looked at where the water flowed and how it had blocked up a hole in the floor of the stream. They talked about how deep it was and used sticks to measure it before stepping in.

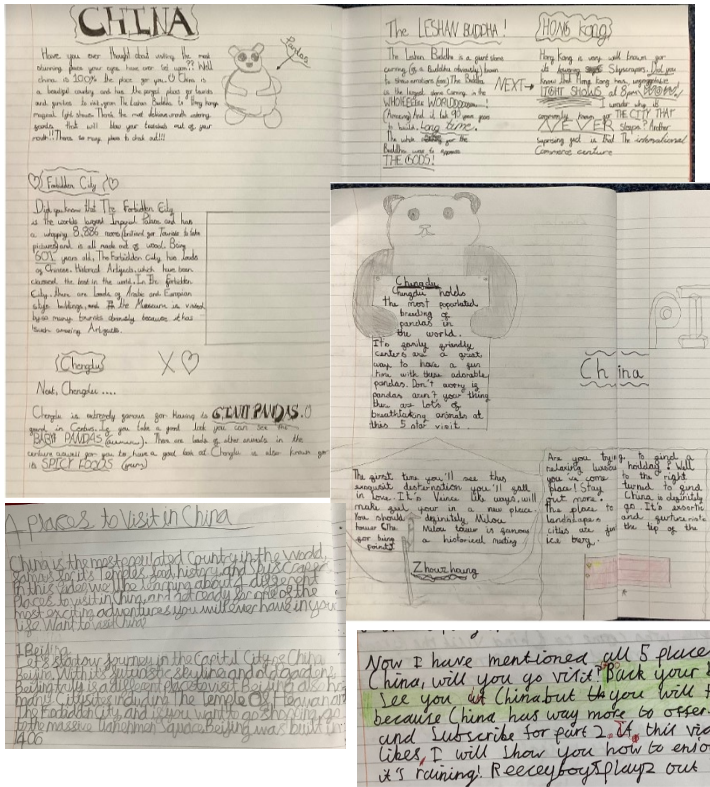
There was enjoyment on the swing and taking it in turns to push and wait for each other to have a go. Cherry Class shared some of what they had enjoyed about their afternoon.



*"... fire lighting... I made 2 sparks!, digging in the stream, crossing the stream, the flour footprints, swinging on the swing - that is my absolute favourite..."*

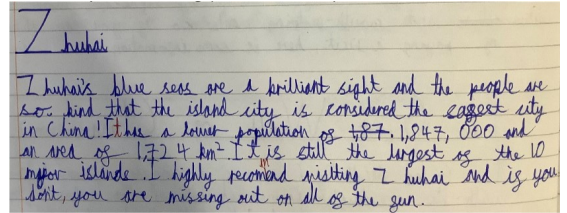
A huge thank you to the parent volunteers who came and supported the children so brilliantly despite the awful January weather!

## Weekly Peek



This week we take a peek into Lilac Class who have certainly come back with renewed energy and enthusiasm after their Christmas break.

They have begun their new topic on 'The Shang Dynasty of Ancient China' and have become YouTube Tour Guides this week, writing their own tour itineraries of their carefully researched tourist destinations. The final pieces of writing were absolutely fantastic and some of their best writing this year - we definitely have some budding YouTubers or TV Presenters in our midst!



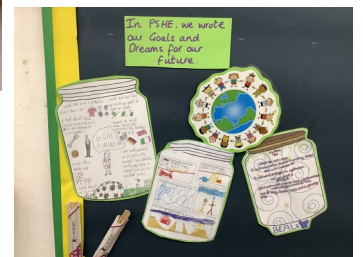
In Maths, they have been busy decoding Roman Numerals and went on a Negative Numbers treasure hunt. We have also recapped decimals, place value and multiplying and dividing by 10, 100 and 1000 before moving onto addition, subtraction, multiplication and division of decimals next week!



In Science, we conducted an experiment to see how exercise affected our heart rates. We had to measure our pulses and then use stopwatches to count our beats per minute before and after completing different activities.



In PSHE, we created our Dream Jars, thinking about what goals we could set for the future!



In RE, we created pieces of art using various styles and tools to reflect Islamic life in the UK.

**Well done, Lilac, for a super start to 2023!  
We are so proud of you and are loving being  
part of Team Lilac this year!**

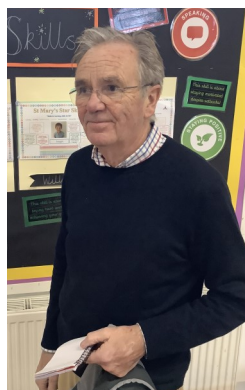


## Swimming



Willow Class had their first swimming lesson of the term and showed great enthusiasm when asked how well it had gone!

## Welcome



We extend a warm welcome to Mr Peter Skitt, our new Caretaker. Mr Skitt started work last week, and has already commented on what a lovely school we have!

**Welcome, we look forward to working with you!**

## St Mary's



Our lovely PTFA continue their work behind the scenes so don't forget to have the School on your **Amazon Smile** account, be signed up to '**Easy Fund Raising**', add any **clothes** to our collection bin, or to pop us onto any re-orders for **Stikins** labels! You join in the activities run throughout the year such as the monthly Bingo Ball, bake sales and £1 donations for mufti days .



If you have other ideas or would like to volunteer please let the PTFA know.



## Wildlife Explorers

This week our wildlife explorers looked at the problems that arise from the release of Chinese lanterns and balloons, learning the basic rule of 'Don't let go!'

Watching hundreds of balloons and lanterns rising together into the sky can look impressive, but what happens next?

There are two main types of balloon, foil (made from a thin layer of foil woven into nylon) and latex (made from the sap of a gum tree which can be labelled as biodegradable but takes up to a year to break down).

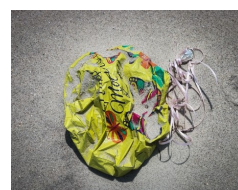
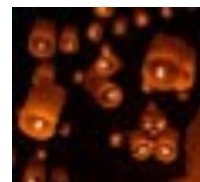
When a balloon rises the low air pressure in the atmosphere causes it to burst. If it gets high enough and cold enough it can shatter into thousands of tiny pieces and fall to the earth. However, from every balloon release, hundreds of balloons don't get very high and float back to earth still inflated.

This is extremely bad for our wildlife. and for marine life, especially larger animals like turtles who can mistake them for jellyfish (their main food source) or for sea birds that think it's a tasty snack floating on the surface. These big bits of rubber can get stuck in the animal's gut and cause it to starve.

The string is often a plastic material that doesn't break down and can tie up, or even strangle animals.

Chinese lanterns, again may look spectacular but there is no way to control where they land and are the cause of many fires, including setting alight crops and animals. At sea they can be misinterpreted as distress flares that then puts our coastal services at risk.

instead of letting things go, why not plant a tree or garden, it'll last for years and years as a reminder of that special someone, and it won't cost the earth. Make seed bombs which guests can have a great time throwing around. You can even make them with wildflower seeds to plant a meadow. Make bunting, a super fun way to bring colour to any event.



## Opportunity

### Autism and Demand Avoidance

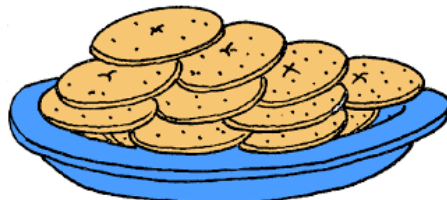
**What:** a coffee morning covering the topic of Autism and Demand Avoidance

**When:** Wednesday 18th January 1.30pm - 2:24pm

**Where:** Park Mead Primary School, Upper Dicker

**Who:** Invitation to all parent and carers within Pioneer Federation

**How:** Class+ supported by Sian Leahy (Inclusion Manager)



## Thank you

A huge, heartfelt **thank you to the PTFA** for their generosity in purchasing so many new books for our school. We now have over 200 decodable books that align with our Little Wandle phonics programme for Reception to Year 2 that are able to be taken home and shared with parents.

We have also been able to buy over 100 books to support Year 3 and 4 in their reading journey so that we are better placed to track and encourage their reading progress. This will have such a huge impact in our school. **Thank you to all parents who support our PTFA** which has enabled them to make such a sizable donation.



Look out for a new book in your book bags from next week.

## Opportunity

**Open for Parents** offer support with various online courses for parents.

They support with our variety of online courses, each with specific tips on how you can deal with the most common behaviour problems; and best of all, these evidence-based methods have already been successful in supporting families worldwide through times of crisis.

Early Help 0-19  
Respect | Partnership | Strength



Simply choose the support you would like to access,  
email with which course you would like to attend to:  
[EH.0-19parentingteam@eastsussex.gov.uk](mailto:EH.0-19parentingteam@eastsussex.gov.uk)

Parenting Guide | East Sussex  
What's On – Jan, Feb, March  
2023

St Mary the Virgin Church of England Primary School, Hartfield, East Sussex, TN7 4AA

Tel: 01892 770221 Email: [office@st-maryhartfield.e-sussex.sch.uk](mailto:office@st-maryhartfield.e-sussex.sch.uk) Website: [www.pioneerfederation.co.uk](http://www.pioneerfederation.co.uk)

## Wellbeing Poster

This week we share details from the Child Therapy Service newsletter, highlighting an activity pack they have available on 'anger'. More information available on their [website](https://www.childtherapyservice.org.uk).



**Child Therapy Service**  
Resources - Training - Support

9th January 2023



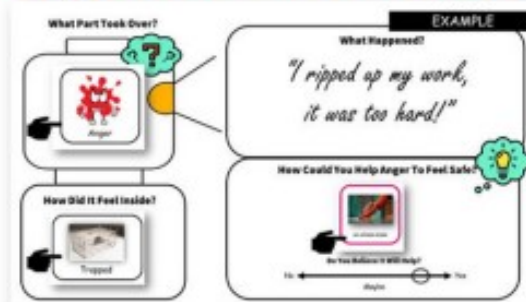
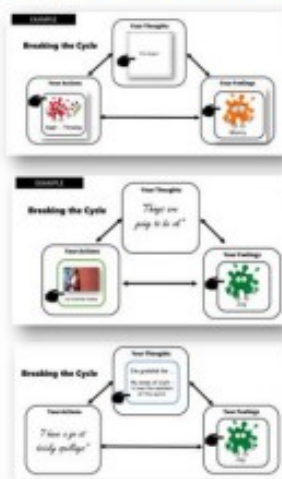
# ANGER

Anger is a part of all of us - it is a healthy response to a perceived threat.

However, when this part is not soothed and made to feel safe again. It can take over - impacting on social situations and learning opportunities.

In this resource pack, we provide the child with a systematic visual approach to breaking down the cycle of anger, to get it resolved.

## Story + Activity Resource Pack



Breaking down CBT into visual aids – to help children break the cycle of anger

Many activities = great outcomes!

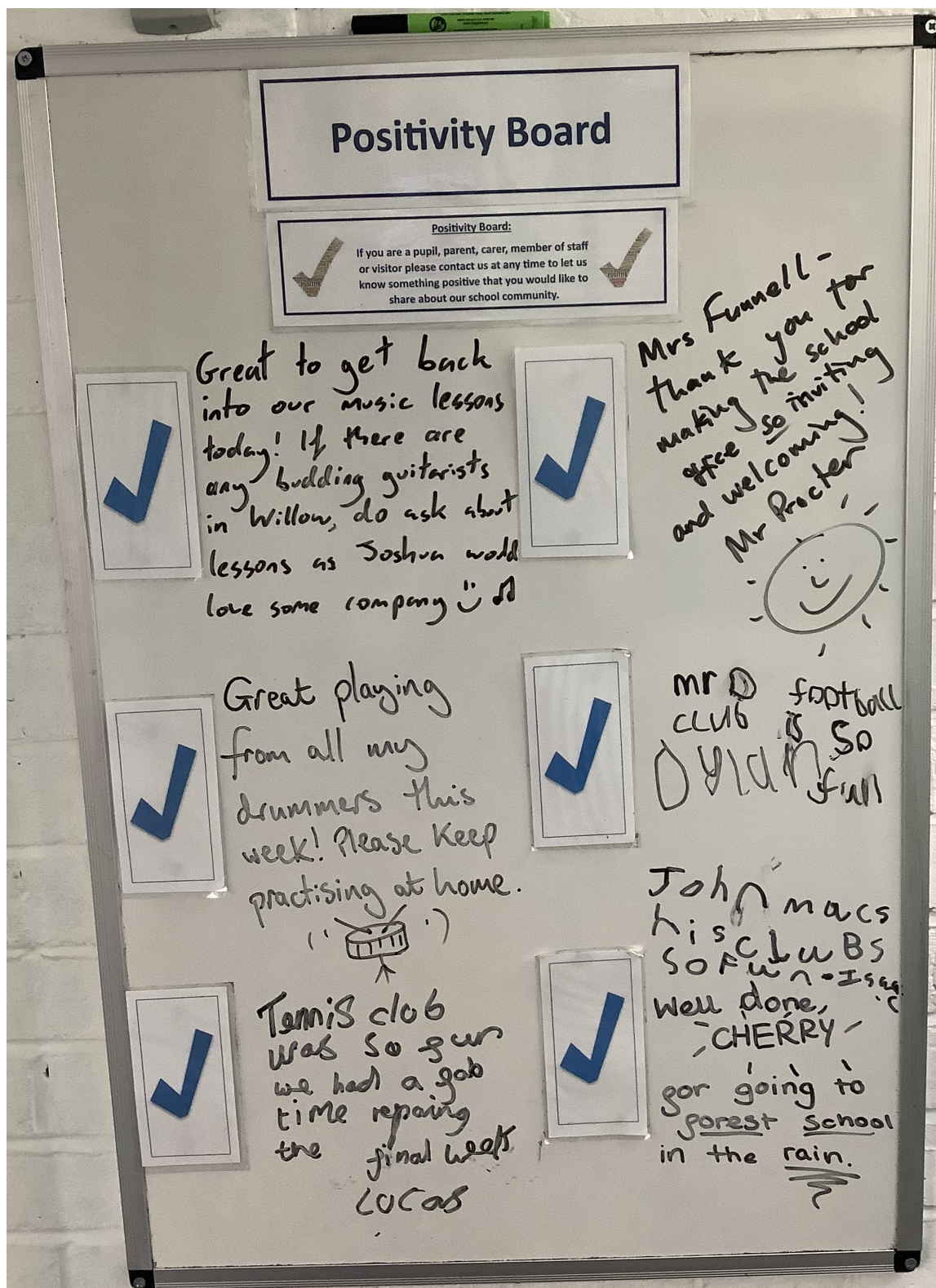


[WWW.CHILDTHERAPYSERVICE.ORG.UK](https://www.childtherapyservice.org.uk)

## Positivity Board

This board enables us to write positive comments, or thoughts, from parents, carers, staff, children and visitors that they would like to share with others about the school, their classes, the children or events.

Please contact us at any time to let us know something that you would like to share. In the newsletter every week, there will be a picture to share and celebrate the positivity within our school.



## Connect@5

In Church

12th Jan  
26th Jan  
9th Feb  
2nd March  
16th March  
30th March  
EASTER

5-6.30pm  
Games, Food, Bible study

For more information contact  
Kate Dillingham (Children's and  
youth worker-St Mary's Church,  
Hartfield) at  
katedillingham97@gmail.com

St Mary's Church  
Hartfield

Year 5 and up

## LITTLE STARS

Parent & toddler group  
Every Monday @ St Mary's  
Church, Hartfield



9.15 to 10.45am  
Tea & Coffee provided

1st & 3rd Sundays, 9.30am

## SUNDAY Discoverers

From ages  
3-6 & 7-11  
years old

Dates of Sunday  
Discoverers this term

15th Jan  
5th Feb  
5th March  
2nd April  
16th April

Join us as we look at  
the **WHOLE** Bible in  
**ONLY 5 sessions!**



Come with us as we learn about God and what  
he made. What he promised us to help us fix  
our **BIG** problem....

You are invited to...

## Knights of the King Holiday Club

Save the date: Feb 16th-17th 2023  
Sunday service 19th Feb

St Mary's Hartfield Church  
Primary School age

Join us as we  
learn to be  
Knights of the  
King... King  
Jesus. We will be  
learning more  
about King Jesus  
as well as  
learning to be  
brave knights.  
You won't want  
to miss it!