



St Mary the Virgin Church of England Primary School

Hartfield East Sussex TN7 4AA

Executive Headteacher: Mr James Procter

Co-Heads of School: Mrs Becca Bastin and Mrs Abbie Hill

Email: office@st-maryhartfield.e-sussex.sch.uk



Term 5 Week 2

Friday 28th April

School Value and Weekly Reflection

Each term, we focus on a Christian Value with weekly reflection in assembly and in class.

We would like to develop this further by asking you to discuss the reflection of the week with your child(ren) at home.

Our value for this term is Friendship and this week we have looked at:



Understanding Friendship

We have been thinking of the different places we can find and develop friendships and have written a message to a friend in school explaining how much their friendship means.

As a family, consider whether you are friends as well and share how much these friendships mean to each of you.

Attendance

The Pioneer Federation goal is an average attendance rate of 97%, recognising that each school day provides opportunities for learning, as well as social and emotional development. It is noticeable when students miss school as it impacts on their progress.



Whole school: week: 95.6% year: 94.2%

Maple: 96.4% Cherry: 96.8%

Willow: 96.5% Lilac: 93.3%

Less than 95.0% - Red 95 to 96.4% - Amber

96.5 to 99.9% - Green 100% - Gold

Well done, Cherry Class!

Headteacher Awards

We have a fantastic six Headteacher awards to celebrate this week:



Finlay: has shown incredible progress in calculating fractions with total independence!



Beau: has shown progress in maths, in confidence, independence and in doing Year 6 work!



Harry (Y5): has shown amazing progress in his sessions with Mrs T, and in his independence in Maths!



Braxton: has shown incredible progress in writing, reducing the reader to near tears!



Evalyn: has worked really hard to improve her sentence structure and vocabulary in her myth writing of Theseus and Minotaur!



Aidan: has displayed fantastic mathematical understanding in place value and use of coins!

Well done to you all.

Top Tips

Emails and letters home this week:

Whole school

- Coronation Celebration

Maple Class

- PJ/Non-Uniform Day

Selected Pupils:

- Reminder to update ParentPay



If you need the newsletter, or any other school letter, to be in a different format, please speak with Mrs Funnell in the school office.

If you need help or support with access to any information, please also contact Mrs Funnell.



Star Skills

Each week, one pupil from each class is identified for their 'star skills' development. Staff and other pupils share their observations of the week, which are then recognised in Celebration Assembly on Fridays. With so many developing, we choose one star skill each week for the Newsletter.

This week:

Sami: has shown amazing **teamwork** working with his friends to rake up the newly cut grass, using a rake and persevering until the job was really well done!

Rocco: has displayed fantastic **speaking skills** sharing his observations during the village walk to help build a picture of the features of Hartfield.

Joshua: stands out in class as someone who is always **aiming high** and trying his best. He has a great sense of fun but knows when it is time to focus on work. His fabulous non-chronological report was a super example of this.

Reece: has shown excellent leadership skills in the role he plays in Wildlife Explorers and he is brilliant at helping the younger ones during lunch clubs.

Next week we will be looking at how Troy, Scarlett, Zenny, and Ruby develop their skills.

Sports Award

This week, our sports awards go to:

Oliver J: for much improved running technique.

Amelie: for excellent focus and much improved sprint start technique.

Oliver O: for great reactions and improved sprint technique.

Bo: for fantastic running in a straight line at speed!



Dates for your Diary

May

- 1st: Bank Holiday - no school
- 2nd: SATs Window opens - Y2
- 3rd: Tennis Taster Sessions - Willow and Cherry
- 4th: Pioneer Athletics Tournament
- 4th: Forest School - Willow Class
- 4th: Community Café 2:00pm - 4:00pm
- 5th: Celebration Assembly: 9:15am
- 5th: Coronation Lunch - 12:15pm - 1:30pm
- 8th: Bank Holiday - no school
- 9th: SATs Week - Y6
- 9th: Bikeability - Y5
- 11th: Forest School - Lilac Class
- 15th: Residential Trip - Lilac Class
- 16th: FGB Meeting
- 17th: Forest School - Maple Class
- 17th: Community Café 2:00pm - 4:00pm
- 18th: Celebration Assembly: 9:15am
- 18th: Lilac Class return from residential
- 23rd: Whole School Pottery Project
- 25th: Toast for World in Need
- 26th: Celebration Assembly - 9:15am
- 26th: May Fair - 2pm on The Croft
- 26th: Last day Term 5



June

- 5th: INSET Day - no school
- 6th: First Day Term 6
- 8th: Forest School - Maple Class

Reading Reward Scheme

Our Whole School Reading Reward Scheme will continue with your ongoing support required to tot up the minutes read at home. Please add additional comments in the reading records if required. Reading Records are checked each week and minutes counted for the House total. This week's results:



| | |
|-----------------------------|----------------------|
| Rother: | 731 minutes |
| Teise: | 627 minutes |
| Cuckmere: | 1,235 minutes |
| Medway: | 391 minutes |
| Well done, Cuckmere! | |

Nuts

Please remember we are a 'nut free' school.

Nut allergy can cause children to be extremely poorly and reactions arise through contact with, or being around nuts, not only through eating them.

Please make sure you do not include any foods containing nuts within your child's snacks or packed lunch as we need to keep **all children** in our school safe.



School Snacks

We have noticed an increased proclivity in providing the children with 'unhealthy' snacks for break time and not so healthy additions to their packed lunches. Please be aware that through the school day we should be encouraging the children to eat healthy foods and in so doing, to model positive food choices to those around them.



Parking

Safety concerns have been raised about car parking at school pick up time.

There have also been issues with cars blocking the driveways of our neighbours.

It is essential that we all take time to consider our driving speeds, our parking choices and the impact these may have on our children and those around us.



Please do not park blocking the drives or the walk way up to the school playground and please ensure your speed is slow enough to stop if a child runs out into your path.

Thank you.

Plants

Last year, the school was very fortunate to receive donations of excess bedding plants to use around the school. If you find yourself with 'too many plants' please consider bringing them into school, even if it is a single flower.

Thank you

Accessories

We have noticed an increased use of necklaces, bracelets, rings, brooches by children across the school which is a health and safety concern.

Our school uniform does not include these items as we try to keep the children safe and to avoid loss or damage to treasured possessions.

Please ensure your children come into school in the correct uniform and do not wear any jewellery outside of stud earrings in pierced ears.

Thank you.

THANK
YOU

Forest School - Thursday 27th April

This term Cherry Class' topic is all about growing. The children played a game of 'you are only safe if you are touching....' to learn the names of some of the trees on the playground. We identified the silver birch, cherry and horse chestnut trees, then made tags with the tree name and picture and some illustrated the leaf shapes and some of the fruit the trees will produce. We had lots of fun hanging them in the trees and watching them twirl in the wind. Some of the class created rubbings of the tree bark with wax crayons.



The children learned to use secateurs safely to cut some willow ready for making and creating. There were imaginative ideas with lovely woodland crowns and plaits and some groups made miniature dens. Fallen blossoms was used to decorate crowns and some children made inventive rings for their fingers using ivy leaves.

Cherry Class also planted a cherry tree at school. They dug carefully and talked about animals such as worms living in the soil. They also shared their knowledge that trees and other plants give the world oxygen and take in CO₂. It was great to hear their knowledge and see them take great care of the sapling tree as they planted it.



The children each chose a 'sit spot' and spent 5 minutes sitting and listening to environmental sounds. Some children used this time to make small collages with the fallen cherry blossom. At the end of their session each of the class played a game of 'Spirit of the Forest'. They had to imagine being an animal in the woods and if they were tagged, they changed into a tree.



At the end of the afternoon each of Cherry Class had a go at writing what they had enjoyed about the afternoon.

"I liked being calm on my own spot"

"I liked making my miniature den"

"I liked the label I made, it was for a cherry tree and I drew cherries on it!"



Toast for World in Need

Thank you to the families of St Marys for the continued support for our amazing charity World in Need. After another 'toastastic' morning (thanks to Braxton for the description) we raised a super £29. Our Pupil Governors continue to help run things smoothly and Mrs Champion and Mrs T are now both a whizz at manning the toasters.

This week, our Pupil Governors have taken several suggestions of fund raising ideas to the pupils of St Mary's. We have asked them to vote on what they would like to do as an additional fundraiser in July so that we raise enough money to cover the month of August. We will update you of the result later on.

The money we raise has a direct impact on the lives of the children that WIN support and we are very grateful for your donations.



Celebrations from Home

Oliver has achieved his 9th Kup in Taekwondo and was given a certificate and yellow striped belt.

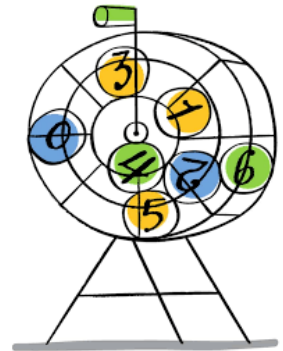
Well done, Oliver!



Bingo Ball

With the end of April upon us, it was time to draw another PTFA Bingo Ball.

This month congratulations go to the winner of ball **number 8** who gets to take home a fabulous **£50.00**.



May Festival

On Friday 26th May we will be holding our May Festival on The Croft, supported by the PTFA who will be providing prosecco, beer, squash, teas, coffee and cake.



All children will be learning their dances through the coming weeks and the May Pole, gazebos and refreshment tables will need organising on the day.



The PTFA will also be running their ever popular Bake Off Competition. Prizes this year will be awarded for:

- Best tasting cake
- Best themed (royal) cake
- Young Baker

Parents are invited to attend from 1:45pm for a 2:15pm start to the dancing.



Cakes should be dropped at school on the Friday morning with judging taking place between 9:30am and 10:00am (these will then be sold with the refreshments in the afternoon.)

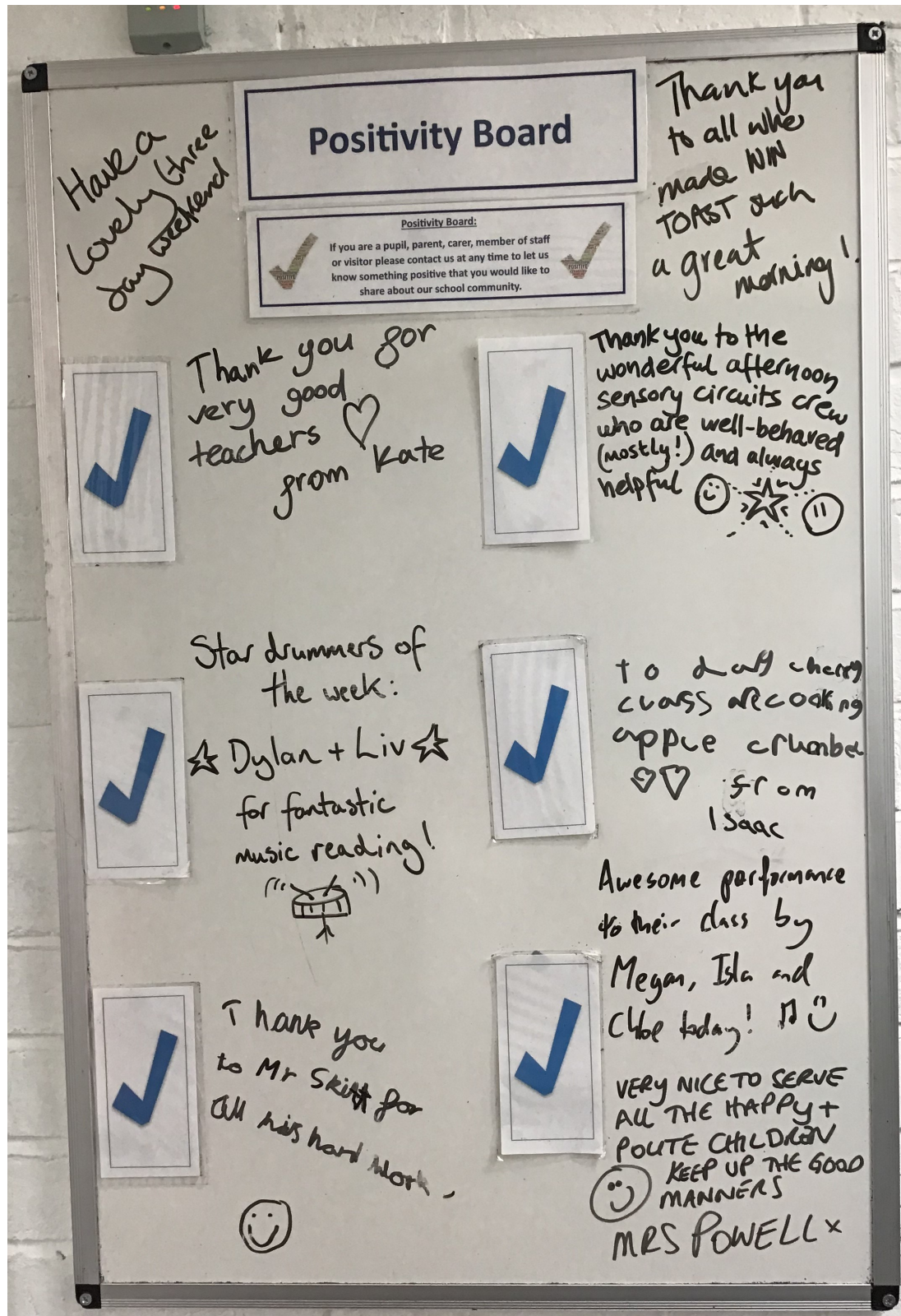
If you are able to help with the set up or selling refreshments, please speak with a member of the PTFA.



Positivity Board

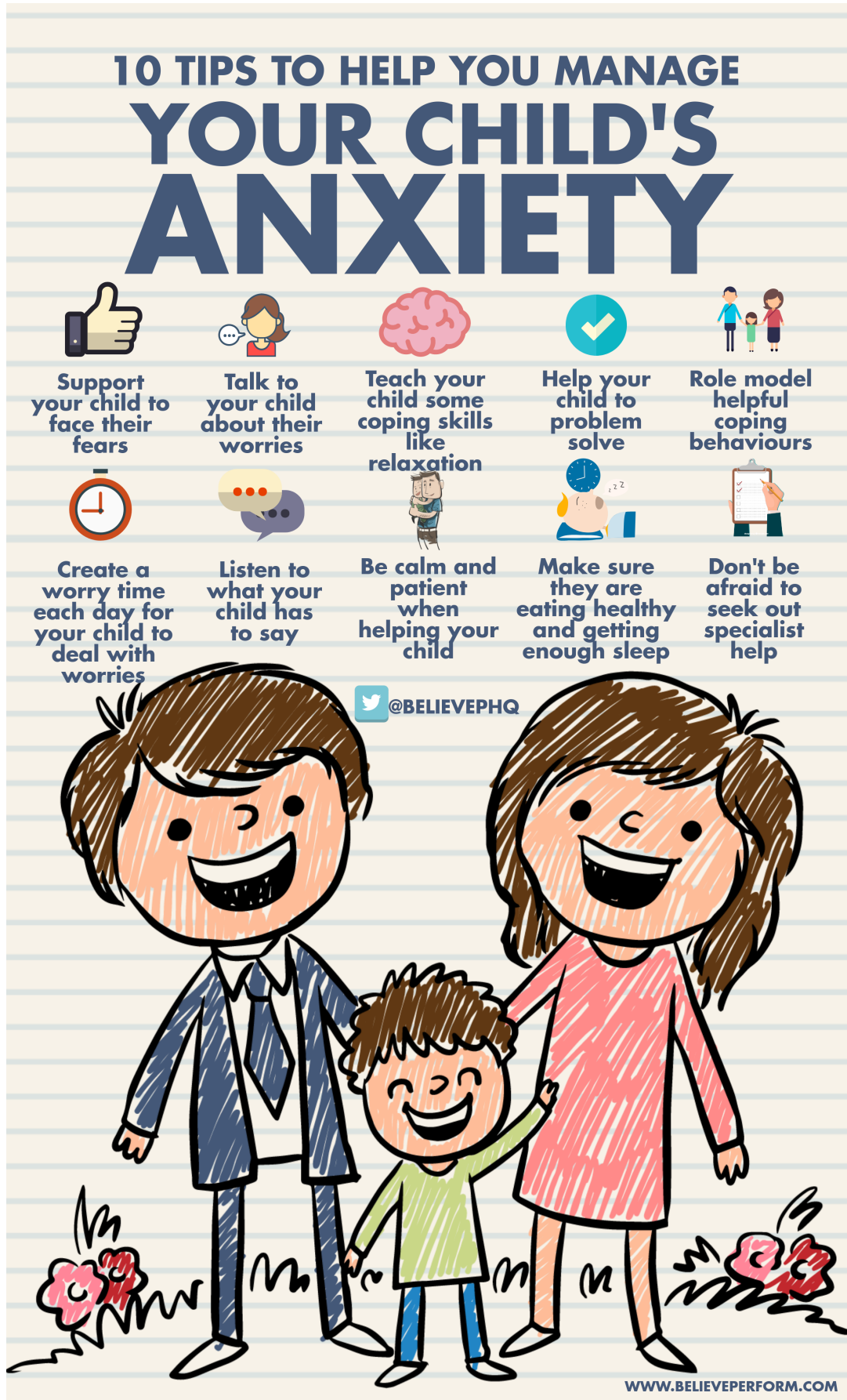
This board enables us to write positive comments, or thoughts, from parents, carers, staff, children and visitors that they would like to share with others about the school, their classes, the children or events.

Please contact us at any time to let us know something that you would like to share. In the newsletter every week, there will be a picture to share and celebrate the positivity within our school.



Wellbeing Poster

This week, our wellbeing poster looks at '10 Tips to Help manage your Child's Anxiety'



St Mary the Virgin Church of England Primary School, Hartfield, East Sussex, TN7 4AA

Tel: 01892 770221 Email: office@st-maryhartfield.e-sussex.sch.uk Website: www.pioneerfederation.co.uk

Opportunity

Church Street Community Cafe

1st and 3rd Thursdays of the month from 2pm - 4pm.

Homemade cake, tea, and coffee.

Everyone welcome.

upcoming dates

Thursday 4th May

Thursday 18th May

Thursday 1st June

Thursday 15th June

For more information contact Joanne Griffin on
07941 856715 or msjoannegriffin@gmail.com

Opportunity

Yoga

With Caroline



Monday's 09:15 - 10:15

Hartfield Village Hall
£10 per session

Join a friendly Hatha flow yoga class developing strength, flexibility and relaxation techniques to enhance your overall wellbeing.

All levels welcome. Please bring a yoga mat.



carolineyogaflow@gmail.com



Opportunity



SCAN ME TO FIND OUT MORE!

Hartfield Village Hall, TN7 4AA
Sat 27th May 2pm - Adults £8 / Children £6
Tel: 01892 771410
Email: madden47@hotmail.com
Suitable for primary aged children and their carers - refreshments available
Promoted by HARTS with APPLAUSE
Rural Touring



St Mary the Virgin Church of England Primary School, Hartfield, East Sussex, TN7 4AA

Tel: 01892 770221 Email: office@st-maryhartfield.e-sussex.sch.uk Website: www.pioneerfederation.co.uk