



St Mary the Virgin Church of England Primary School

Hartfield East Sussex TN7 4AA

Executive Headteacher: Mr James Procter

Head of School: Mrs Jane Robinson

Email: office@st-maryhartfield.e-sussex.sch.uk



Term 1 Week 1

Friday 8th September

Welcome



Welcome to:

- our new Maple Class children and families
- Our new members of staff:
 - Mrs Jane Robinson (Head of School)
 - Mrs Victoria Mandy (Lilac Class Teacher)
 - Mrs Mary-Lou Perry (Maple Class Teacher)
 - Mrs Naomi Fry (Cherry Class Teacher)
 - Miss Megan Ambrose (PE Coach)
 - Mr Marek Wysocki (Care Taker)

Welcome Back to :

- All of the fabulous children who have come back to new classes/years following their summer holidays.

We look forward to sharing this new academic year with you all!

Dates for your Diary



September

- 11th: FGB Meeting 5:00pm - 6:00pm
- 14th: Forest School - Cherry Class
- 14th: Meet the Teacher - 3:15pm
- 15th: Celebration Assembly 9:15am - 9:30am
- 21st: Forest School - Maple Class
- 21st: Community Café 2:00pm - 4:00pm
- 22nd: Celebration Assembly 9:15am - 9:30am
- 26th: Tempest Photography
- 28th: MacMillan Coffee Morning 10am - 11:00am
- 28th: Forest School - Willow Class
- 29th: Celebration Assembly 9:15am - 9:30am
- 29th: MacMillan Bake Sale - 3:00pm

School Value and Weekly reflection

Each term, we focus on a Christian Value with weekly reflection in assembly and in class.

We like to develop this further by asking you, where possible, to discuss the reflection of the week with your child(ren) at home.

This week we have been looking at our Golden Rules and how important they are to our school.



The children talked about what this means in their class and around the school...

Ready

Looking at the teacher, being ready to learn, walking to lunch, sitting properly, having everything you need to get going,

Respectful

Being helpful, careful, being careful with words, listening to others ideas, taking care of our space and other people, people's feelings,

Safe

Making good choices, safe while playing, sitting, walking, playing, learning, keeping hands to ourselves, safe online

Achievement for All, Learning together and Learning for Life

What Golden Rules do you have at home?

Top Tips

Letters and emails home:

- **Whole School**
 - ◇ Welcome Back / Golden Rules
 - ◇ Meet the Teacher
- **Specific**
 - ◇ Health Care Plans
- **Lilac Class**
 - ◇ Termly Newsletter
- **Cherry Class**
 - ◇ Phonics
- **Maple Class**
 - ◇ ParentPay



Don't forget to book your lunches before 8:00am each day or termly if possible!

If you need the newsletter, or any other school letter, to be in a different format, please speak with Mrs Funnell in the school office.

If you need help or support with access to any information, please also contact Mrs Funnell.

Helpful Hints

The following gives information to events held within school:

Mufti Day: this is a day when children are encouraged to donate £1 to our PTFA funds in exchange for your child wearing their own clothes to school. There are two mufti days when other donations are requested, but more of that later in the year.



Bake Sale: throughout the year each class is asked to provide cakes for sale after school. We always start with Lilac Class as they know what to expect, then work our way down the school.

On Bake Sale Day

- If it is your Class bake sale, you are asked to provide cakes (home made if possible but **without nuts**) for the children to sell when school finishes.
- If not your Class, you are asked to join in with the sale by purchasing the lovely cakes.
- All money raised goes to the PTFA



Celebration Assembly: this assembly is held each Friday morning from 9:15am when we celebrate the successes of the week both in school and at home, so please let us know of any achievements.

Parents are invited to join this assembly to celebrate with the children.

You are also welcome to join us in our Wednesday Worship in church at 9:30am.

School Clubs

Currently running:

- Breakfast Club (Monday - Friday 7:40am)
- Mixed Football (Monday)
- Wildlife Explorers (Wednesday lunchtime Y1-6)
- Handball (Friday)
- Strings (Monday during day)
- Drums (Tuesday during day)
- Keyboard/Vocals (Wednesday during the day)
- Arts and Crafts (Thursday lunchtime, no sign up)
- Lego Club (Friday lunchtime, no sign up needed)

Please send email permission if your child would like to attend Wildlife Explorers. Please email/call for Breakfast Club or Piano. Thank you

Safe Grapes

The size and shape of grapes means they can completely plug a child's airway. If sending into school please ensure they are chopped up.



Celebrations from Home

Over the summer Immy was very busy making lots of bracelets, including turtle ones for a charity called 'Save the Turtles'.

For every purchase of a turtle bracelet Immy donated £2 to the charity raising an amazing £100.

Immy also had a stall at the village fete last Saturday and sold out of all the turtle bracelets.



Amazing work Immy.

Well Done!

St Mary's **PTFA**

Our lovely PTFA continue their work behind the scenes so don't forget to have the School on your **Amazon Smile** account, be signed up to 'Easy Fund Raising', add any **clothes** to our collection bin, or to pop us onto any re-orders for **Stikins** labels!

The PTFA is always open to **new volunteers** so if you have a bit of spare time and would be happy to join them, please get in touch.



School Office Routine

From this week, Mrs Funnell will be finishing at school at 1:00pm each Thursday and 2:00pm each Tuesday.

If you have routine queries, please contact the school office at other times of the week.

However, if you need to speak with the school or come into school, this is still possible but we would ask for your patience when awaiting a response to the telephone or door.

If you have any queries about this, please contact the school.

Thank you for your support and understanding.



Wellbeing Poster

Our Wellbeing Posters this term are going to look at Online safety.

This week we take a look at Apps and Social Media (taken from #Asktheawkward)

#ASKTHE
AWKWARD

APPS AND SOCIAL MEDIA

WHAT YOU NEED TO KNOW:

- 1** There are benefits to using apps and social media. Online platforms give young people the chance to chat with friends and family, learn new things and have fun. It's important to recognise these opportunities, and start conversations with the positives.
- 2** Regular conversations with young people are the best way to stay up to date. There are new apps being created all the time, and you will never learn about all of them. Chat little and often about the apps and sites young people use, have heard about, and how they work. You'll start to find that many have the same or similar functions.
- 3** Focus on three key areas to help your child stay safer: viewing, sharing, socialising. When faced with a new app or platform, talk about the following:
 - the content they can view
 - the things they can share
 - the people they can talk to

Use our [being social online guide](#) to help them find ways to make it safer.

WANT MORE INFO?

Being social online: what parents and carers need to know

www.thinkuknow.co.uk/parents/articles/parents-guide-being-social-online

Is your child ready for social media?

www.thinkuknow.co.uk/parents/articles/is-my-child-ready-for-social-media

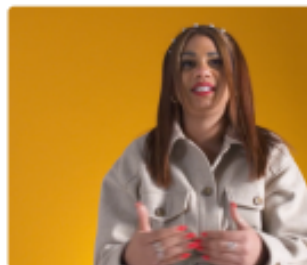
CONVERSATION STARTERS

What do you use apps/ social media for most?

How do you stay safe on apps/social media?

Do you know what apps I use?

What's your favourite app at the moment? Show me...



"this is the world ... and we kind of all have to understand that, there will be another app tomorrow, we've just got to understand it and keep going with it"



Guide to apps, Internet Matters

www.internetmatters.org/resources/apps-guide

Children's Media Use and Attitudes, Ofcom

www.ofcom.org.uk/research-and-data/media-literacy-research/childrens

School Clubs

We plan to continue our extra curricular clubs within school this term.

Breakfast Club is up and running from 7:40am to the beginning of school each day.

Places need to be pre-booked through the office so please call: **01892 770221**



Red Butler Music will come in on Tuesday and Thursday. If you are already signed up, they will contact you. If you would like to sign up (strings or drums), please call them: **01273 805666**

Mixed Football Club (R-6) with Active Education Sussex starts on Monday 11th September. Please visit their website to book: <https://activeeducationsussex.co.uk/product-category/st-mary/>



Miss Rowberry comes in on a Wednesday morning to teach **piano or singing**.

Please email the office to book: office@st-maryhartfield.e-sussex.sch.uk

Wildlife Explorers will continue on **Wednesday lunch time** for Y1 - Y6. We need to ensure that a clear register is provided to Mrs Rowberry so if you have yet to arrange attendance please email the school office: office@st-maryhartfield.e-sussex.sch.uk



Jon Prenelle will be running after school **Tennis Club** on Wednesdays from 19th April.

To sign up either: Phone/whatsapp: 07464972681/07495368571, or email: ken-tandsussextennis@outlook.com

Handball (R-6) with Active Education Sussex starts on Friday 15th September. Please visit their website to book:

<https://activeeducationsussex.co.uk/product-category/st-mary/>



Please email the school office, contact Red Butler, Jon Prenelle or Active Education Sussex if you would like to sign up. Thank you.

After School Clubs (Monday and Friday)

ST MARY PRIMARY SCHOOL AFTER SCHOOL CLUBS



Dear Parents/Carers,

Active Education Sussex are pleased to announce the following after school clubs for the 2023-2024 academic year. You will be made aware when these clubs will become available to book each term via the school office from our club flyers.

We have carefully selected a wide range of sports that mirror our tournament schedule across the schools to help engage and develop the children before the tournament takes place. We have also looked to give every child the opportunity to develop their skills across a varied number of activities.

Miss Ambrose will continue to deliver high quality, fun and engaging after school clubs throughout the academic year.

We hope that you enjoy the wide variety of clubs on offer and look forward to seeing your children enjoying each and every one. If you have any questions regarding clubs or tournaments, then please do feel free to email us using the contacts at the bottom of the page.

CLOTHING

Please ensure your child(ren) attend with suitable weather appropriate clothing and footwear for the activity. This will be in case of adverse weather such as rain and extreme cold, as access to school hall may be limited.

St Mary Primary School						
Term	Day	Time and Sessions	Sport	Year Groups	Start Date	End Date
1	Monday	15:15-16:15 (6 Sessions)	Football	R-Y6	11 th September 2023	16 th October 2023
	Friday	15:15-16:15 (6 Sessions)	Handball	R-Y6	15 th September 2023	20 th October 2023
2	Monday	15:15-16:15 (6 Sessions)	Gymnastics	R-Y6	30 th October 2023	4 th December 2023
	Friday	15:15-16:15 (6 Sessions)	Dodgeball	R-Y6	3 rd November 2023	8 th December 2023
3	Monday	15:15-16:15 (5 Sessions)	Badminton	R-Y6	8 th January 2024	5 th February 2024
	Friday	15:15-16:15 (6 Sessions)	Pop Darts & Table Tennis	R-Y6	5 th January 2024	9 th February 2024
4	Monday	15:15-16:15 (6 Sessions)	Netball	R-Y6	19 th February 2024	25 th March 2024
	Friday	15:15-16:15 (5 Sessions)	Hockey	R-Y6	23 rd February 2024	22 nd March 2024
5	Monday	15:15-16:15 (5 Sessions)	Cricket	R-Y6	15 th April 2024	20 th May 2024
	Friday	15:15-16:15 (6 Sessions)	Basketball	R-Y6	19 th April 2024	24 th May 2024
6	Monday	15:15-16:15 (6 Sessions)	Volleyball	R-Y6	3 rd June 2024	8 th July 2024
	Friday	15:15-16:15 (6 Sessions)	Rounders	R-Y6	8 th June 2024	12 th July 2024

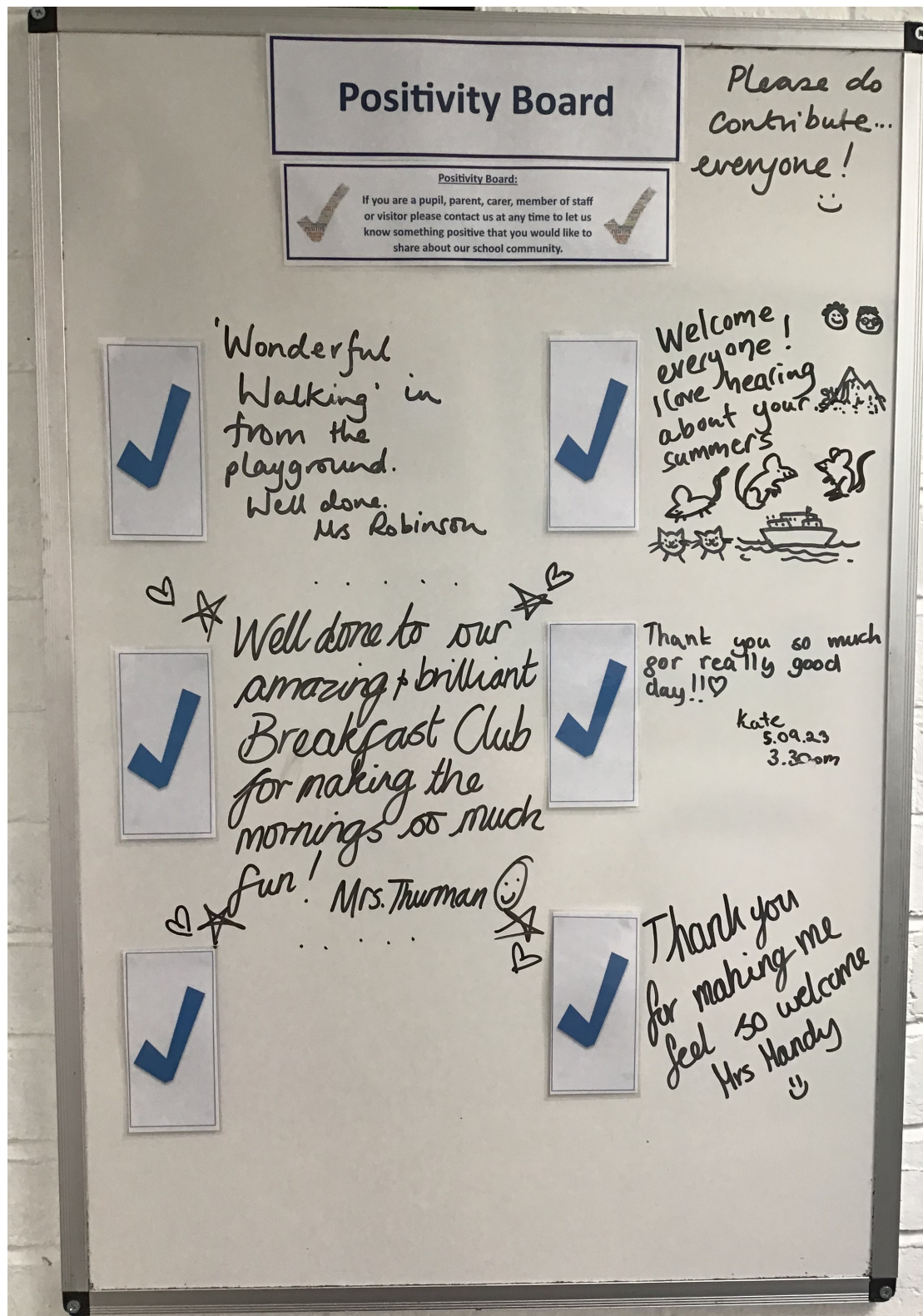
*Clubs are subject to change if circumstances are required to do so.

BOOKING FOR SEPTEMBER TERM 1 CLUBS WILL BE AVAILABLE ON THE FIRST WEEK RETURNING ON TUESDAY 5TH SEPTEMBER VIA [ACTIVEEDUCATIONSUSSEX.CO.UK/BOOK-A-COURSE/](https://activeeducationsussex.co.uk/book-a-course/)

Active Education Sussex Ltd | 07761510618 | office@activeeducationsussex.co.uk

Positivity Board

This board enables us to write positive comments, or thoughts, from parents, carers, staff, children and visitors that they would like to share with others about the school, their classes, the children or events. Please contact us at any time (or come into school) to let us know something that you would like to share. In the newsletter every week, there will be a picture to share and celebrate the positivity within our school.



Opportunities at St Mary the Virgin Church

LITTLE STARS

Parent & toddler group
Mondays @ St Mary's Church,
Hartfield

Upcoming dates

11th September
18th September
25th September



9.15 to 10.45am
Tea and Coffee Provided

1st & 3rd Sundays, 9.30am

SUNDAY Discoverers



**Dates of Sunday Discoverers
this term**

17th September
15th October
5th November
19th November
17th December

Join us for each
Sunday
discoverers as
we find out
more about
God

For more information
Contact Rev Julie Sear at
revjuliesear1@gmail.com or 01892770436

Church Street Community Cafe

1st and 3rd Thursdays of the month from 2pm - 4pm.

Homemade cake, tea, and coffee.
Everyone welcome.

upcoming dates

Thursday 21st September
Thursday 5th October
Thursday 19th October
Thursday 2nd November

For more information contact Joanne Griffin on
07941 856715 or msjoanegriffin@gmail.com

We are blessed to have such a close relationship with our church and are pleased to be able to share information about the many events they provide for the local community. They offer great opportunities and are always open to new people.

Connect@5

14th September
28th September
12th October
HALF TERM
9th November
23rd November
14th December
CHRISTMAS

5-6.15pm
Games, Food, Bible story

For more information
Contact Rev Julie Sear at
revjuliesear1@gmail.com or
01892770436

Hartfield Village Hall

Year 5 and up