



St Mary the Virgin Church of England Primary School

Hartfield East Sussex TN7 4AA

Executive Headteacher: Mr James Procter

Head of School: Mrs Jane Robinson

Email: office@st-maryhartfield.e-sussex.sch.uk



Term 1 Week 2

Friday 15th September

Volunteers

We are very thankful for the number of volunteers that we have in school and feel privileged that so many of you are happy to give your time to help create great learning opportunities for our children. There is always so much to do and we would like to make our annual request for more volunteers. If you have a specific skill that could be turned into a 'lunch club', have an hour to listen to readers or have time to help 'keep our environment tidy', we need you! Please let us know by calling 01892 770221.



School Value and Weekly reflection

Each term, we focus on a Christian Value with weekly reflection in assembly and in class. We like to develop this further by asking you, where possible, to discuss the reflection of the week with your child(ren) at home. This term we are looking at:



Thankfulness

This week we have been learning how important it is to thank God in all things with special focus on the need to be thankful for our food and drink.

The children then wrote their own your own Grace to say before lunch which each class have collated into a book.

As a family do you have a special prayer of thanks for the provision of food and drink?

Dates for your Diary

September

- 21st: Forest School - Maple Class
- 21st: Community Café 2:00pm - 4:00pm
- 22nd: Celebration Assembly 9:15am - 9:30am
Introduction of Art for All
- 26th: Tempest Photography - Individual photos
- 28th: Forest School - Willow Class
- 29th: Celebration Assembly 9:15am - 9:30am
- 29th: MacMillan Bake Sale - 3:00pm



October

- 1st: Harvest Festival in Church
- 4th: School assembly in Church - 9:30am with
Crawley Open House
- 5th: Forest School - Lilac Class
- 5th: Community Café - 2:00pm - 4:00pm
- 6th: Celebration Assembly 9:15am - 9:30am
- 11th: Harvest Celebration Assembly in Church -
9:30am
- 12th: Forest School - Maple Class
- 13th: Celebration Assembly 9:15am - 9:30am
- 14th: Art for All - Hartfield
- 17th: FGB virtual meeting - 5:00pm - 7:00pm
- 18th: School assembly in Church - 9:30am
- 18th: Ethos Committee meeting - 2:00pm
- 18th: Last Day T1
- 30th: First Day T 2

Top Tips

Letters and emails home:

- **Whole School**
 - ◇ Forest School
 - ◇ Clubs



If you need the newsletter, or any other school letter, to be in a different format, please speak with Mrs Funnell in the school office.

If you need help or support with access to any information, please also contact Mrs Funnell.

A Peek Inside Maple Class

Maple Class have had a very busy week.

We have been getting to know one another and finding out about our classroom and our new school environment. We have also been spending time with our buddies.



Playing with our new friends



Putting all of our heights on the height chart



Sharing our treasure boxes!



Doing lots of fine motor activities



Sharing and turn-taking

Painting with different implements



Taking our first Class trip to Church, investigating what is there and meeting Rev Julie



Forest School - Thursday 14th September

This were our first session back of the term and Cherry Class were keen to get going and explore forest school, including to show our new Forest School supporter how to get there.

We set off on our walk to the wood, the children pointing out each thing to look for to make sure that we were going the right way.



They spotted some sheep in the field; the class had a go at making a sheep sound to see if we could get their attention but they were too busy eating.



As we got to the bridge half the class went under to see if they could hear us stomping, they said we were really loud.

The Impact of Forest School for the children is the knowledge the children have gained from the Forest School experience.



The impact can be seen through the skills gained, tools used, art and craft activities undertaken, the observations and knowledge of the fruit, plants and trees in relation to the seasons and the skills involved in learning how to play Forest School games.

Some children helped to move some pallets, stacking them on top of each other ready for our bug hotel. Once stacked a spider was spotted having already moved in, "look a spider", someone called.

Cherry Class chose the top layers for the hotel, using straw, leaves and sticks, filling in all of the gaps to make a great home for insect.

We talked about what may move into the hotel and why it was important to build one. A sign was created to add to the hotel with some great pictures of bugs!



There was lots of time for free play, with some

great turn taking while balancing on the slack line and lots of digging and clearing in the ditch so that it is ready for the water to return.



Celebrations from Home

Noah kept busy over the summer helping with the hay harvest and he completed the East Sussex Reading Challenge.



Well done, Noah!



Rocco has been being creative, making a hammock from cling film which he was then able to use!



Jacob increased his pet care chores over the summer, adding three mice to his pet family.

Wildlife Explorers

Our Wildlife Explorers club had a great start to September with activities for the RSPB Big Wild Summer. There were a lot of exciting observations around school and top notch quizzing.

All club members gained well earned certificates to record their enthusiasm and hard work.

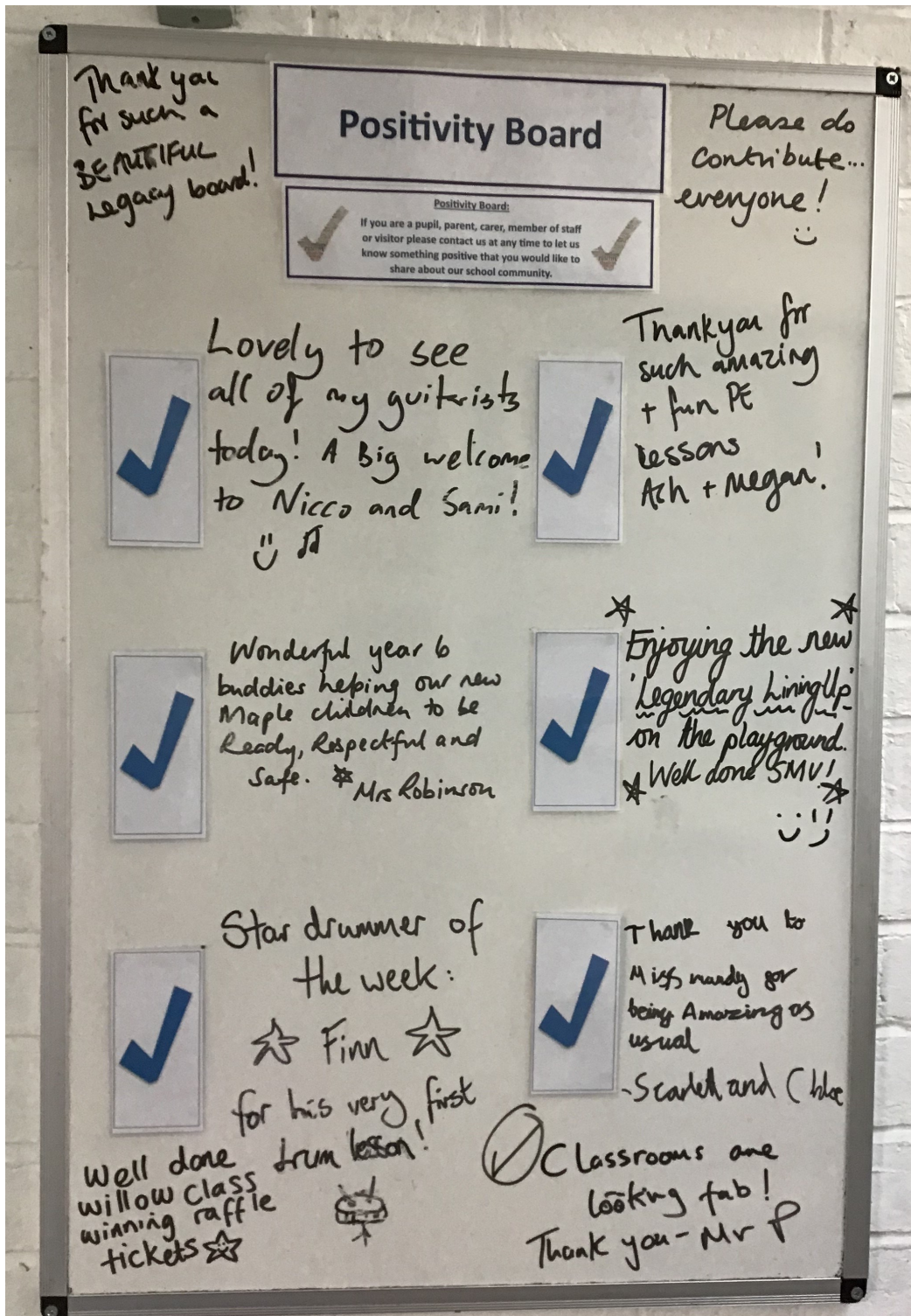
It was very pleasing that all the young leaders slotted into new responsibilities giving lots of support to younger members.

Well done and congratulation to the SMV Wildlife Explorers Club!



Positivity Board

This board enables us to write positive comments, or thoughts, from parents, carers, staff, children and visitors that they would like to share with others about the school, their classes, the children or events. Please contact us at any time (or come into school) to let us know something that you would like to share. In the newsletter every week, there will be a picture to share and celebrate the positivity within our school.



Wellbeing Poster

Our Wellbeing Posters this term are going to look at Online safety.

This week we take a look at Two-Way Trust (taken from #Asktheawkward)

#ASKTHE
AWKWARD

TWO-WAY TRUST: PARENTS/CARERS & CHILDREN

WHAT YOU NEED TO KNOW:

- 1** Building trust is more important than setting rules or making threats of punishment. Young people need positive advice and guidance as they develop and begin to make their own decisions. Learning and setting agreements together is better than banning online use. Revisit agreements as young people get older.
- 2** Young people want adults to lead by example. They need positive role models for all aspects of life, including socialising and interacting online. Good role modelling online includes: asking consent to share pictures of others (including your child), not posting comments that can cause offence and only accepting friend requests from known people.
- 3** Young people want to feel they can turn to adults for advice and support. They want adults to listen to them and not judge. This means not blaming them for anything that has happened online and providing calm support and guidance on what they can do and where they can get help.

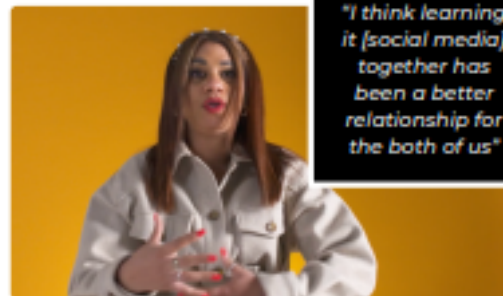
CONVERSATION STARTERS

What do you think might worry me about you being online?

What might worry you about me being online?

Do you think a family agreement for online use is a good idea? How might this look for us?

How much do you think I should know about what you do online?



"I think learning it [social media] together has been a better relationship for the both of us"

WANT MORE INFO?

Sharing pictures of your children online

www.thinkuknow.co.uk/parents/articles/Sharing-pictures-of-your-children/

Having a conversation with your child

www.thinkuknow.co.uk/parents/articles/having-a-conversation-with-your-child/

A parent and carers introduction to Asking The Awkward

www.thinkuknow.co.uk/parents/ask-the-awkward



Opportunity

Beacon Academy
Open Day 2023
Saturday 7 October
9:30am - 12:30pm



Our high expectations and inclusive culture ensure that all students are inspired, challenged and supported to make excellent progress.



"My daughter has only joined the school recently, but we love the inclusive, friendly and welcoming ethos."

-Parent



"Pupils strive to 'make their MARK' (manners, acceptance, respect, kindness). These values are evident in the very strong relationships between teachers and pupils."

-Ofsted

"Leaders encourage high quality learning in this ambitious and successful academy. Pupils achieve very high standards."

-Ofsted



"Teachers are real experts in their field. They are skilled at helping pupils to develop their ideas. Many pupils with SEND make excellent strides forward because of the high quality teaching in the classroom."

-Ofsted



www.beacon-academy.org



Additional Open Events

Bookable Open Morning Tours
Monday 9 - Friday 13 October 2023, 8:45am

Booking essential - reserve your place online

Sixth Form Open Event

Saturday 7 October 2023, 10:30am - 12:30pm

Register at www.beacon-academy.org

[Facebook](https://www.facebook.com/BeaconAcademyCrawborough) @BeaconAcademyCrawborough

[Instagram](https://www.instagram.com/BeaconAcademyCrawborough) @BeaconAcademyCrawborough

[Twitter](https://www.linkedin.com/company/Beacon_Academy) @Beacon_Academy

Opportunity

On **Friday 29th September 14.45 - 15.15pm**, there will be a cake sale in the school playground to raise money for Macmillan Cancer Support. If you would like to donate cakes, that would be greatly appreciated. Any cake donations can be brought to Mrs Mandy at the start of the day on the 29th.

We look forward to welcoming you to this event.

**MACMILLAN
CANCER SUPPORT**



PTFA

St Mary's



Our lovely PTFA continue their work behind the scenes so don't forget to have the School on your **Amazon Smile** account, be signed up to 'Easy Fund Raising', add any **clothes** to our collection bin, or to pop us onto any re-orders for **Stikins** labels!

The PTFA is always open to **new volunteers** so if you have a bit of spare time and would be happy to join them, please get in touch.



St Mary the Virgin Church of England Primary School, Hartfield, East Sussex, TN7 4AA

Tel: 01892 770221 Email: office@st-maryhartfield.e-sussex.sch.uk Website: www.pioneerfederation.co.uk

Opportunities at St Mary the Virgin Church

We are blessed to have such a close relationship with our church and are pleased to be able to share information about their Harvest Supper and their Harvest appeal.



Harvest Appeal



1st October – Harvest Festival Services.

We would like our harvest donation to be both monetary and gifts.

In anticipation of a tough winter and Christmas please could you come to church on the 1st October, ready to give financially to Crawley Open House and our Local Foodbank. The money will be split between the two charities.

Please give generously and bring your gifts to church.

AN UP TO DATE LIST WILL BE SENT OUT NEARER THE DATE.

ALL ITEMS MUST BE IN-DATE and WE CANNOT ACCEPT HOME-MADE or PERISHABLE FOODS

If you would rather give a financial gift specifically to the Foodbank. Please put it in the Gift Aid envelope marked up **FOODBANK.**

Angela Ogle has kindly been buying items each week with monies donated.

THANK YOU TO EVERYONE WHO DONATES FOOD AND MONEY ON A REGULAR BASIS. PLEASE CONTINUE TO BE GENEROUS.

Harvest Supper



Our Harvest Supper will be held on Saturday 30th September.

6.30-8.30pm. St Mary's Church.

There will be a quiz, and activities for the children. Main Course Provided, and please sign up if you are willing to bring a pudding or a salad. (NO NUTS).

Please bring your own plate, bowl, cutlery, and drink of your own choice. Glasses and jugs of water will be provided.

An opportunity to give thanks to God for all we have received and to bless the work of Crawley Open House and our Local Foodbank. Please bring donations on the night.

Ian Wilkins Head of fundraising and relationships at Crawley Open House will be our guest at the supper. He will have an opportunity to share some of his work with us.

Our Sunday Collections on the 1st of October in both churches will be split between Crawley Open House and our local Foodbanks.

Please let us know if you would like to attend. You will find more information on our websites.

Sign up sheets will be at the back of each church.

revjuliesear1@gmail.com www.hartfieldchurch.org

Elaine Frost Benefice Administrator. admsmht@gmail.com



Opportunity

You don't have to do it alone. The Parenting Team offer support through a variety of online courses, each with specific, research based tips on how to deal with the most common behavioural presentation.



Visit: <https://www.openforparents.org.uk/> or email EH.0-19parentingteam@eastsussex.gov.uk

**Are you a PARENT or CARER
In East Sussex?**

We are here to help!

**What's on
October, November and December 2023**



Page 1



SAVE THE DATE

Attention all you young growers, gardeners and artists! We are inviting you to take part in the

Colemans Hatch Horticultural Society AUTUMN SHOW 2023

Saturday September 30th
12 noon at Trinity Hall & Holy Trinity Church

This year's theme is 'Oceans & Rivers'

Entries are invited in the following classes:
vegetables and fruit, flowers, flower arranging, cookery, wine and other home-made beverages, photography, art and crafts, childrens classes.

Additional stalls will include:
Tombola, refreshments, guess the weight of the pumpkin,
Friends of the Medway, fungi display

And new for this year...the **POETRY TENT** where you can recite your poems or enjoy listening to others' work.

Entry form and all information including the class schedule are available to download from the website

www.colemanshatchflowershow.co.uk

Last date for entry forms: 11pm Wednesday September 27th

