



St Mary the Virgin Church of England Primary School

Hartfield East Sussex TN7 4AA

Executive Headteacher: Mr James Procter

Head of School: Mrs Jane Robinson

Email: office@st-maryhartfield.e-sussex.sch.uk



Term 2 Week 4

Friday 24th November

Headlines from our Head of School

Focus on Uniqueness

This week I want to talk about the fact that we recognise that all children (and adults) are unique and come with a wide range of strengths and needs.



As a teacher, who has taught for many years and for the last 8 years also been a SENCO (Special Educational Needs Coordinator) it is a joy to come and join the staff here at St Mary the Virgin where children are recognised as individuals. Our values, behaviour policy and Thrive focus promotes the importance of children knowing they are heard and valued and we adults are invested in their progress. Some of our children need more support to develop their emotional regulation, some have sensory sensitivities as examples. The 'regulation station' outside my office that some of you may have seen is regularly used by children as a space to reflect, regulate and get back 'into the green zone' ready to learn and play.

On this note, I wanted to promote the 'CLASS +' (communication, learning and autistic support service parent support) team, who offer support for families on the neurodiversity pathway, coming here next week on Wed 29th Nov between 9:00am and 10.30am. They will be hosting a coffee morning (advertised to all schools in ES) here in the hall. There is a sensory needs focus. If you feel you would benefit from hearing the messages that they will share please do attend.

Mrs Robinson
Head of School

Top Tips

Letters, emails and WhatsApp home:

Cherry School

- Reading

Selected

- Christmas Mugs
- Dodgeball
- Celebration Assembly

Please remember non-uniform day next Friday, 1st December, in exchange for PTFA tombola.



PTFA

St Mary's



Christmas Christmas Fair:

Sunday 3rd December, 12noon to 3:00pm



Christmas Wreath Making:

Thursday 7th December 7:00pm

If you need the newsletter, or any other school letter, to be in a different format, please speak with Mrs Funnell in the school office.

If you need help or support with access to any information, please also contact Mrs Funnell.

Dates for your Diary



November

28th: Flu Vaccine
29th: Collective Worship - 9:30am Church
29th: Ethos Committee - 12:30pm
30th: Forest School - Lilac Class

December

1st: Non-Uniform Day - tombola donations
1st: Celebration Assembly 9:15am
1st: Festive Fun Run - sponsored
3rd: PTFA Christmas Fayre 12noon - 3:00pm
4th: Christingle Making
5th: Collective Worship - Christingle Service
9:30am Church
7th: Forest School - Maple Class
7th: Community Café 2:00pm - 4:00pm
7th: PTFA Wreath Making - 7:00pm
8th: Celebration Assembly 9:15am
8th: Live Hartfield Nativity 6:30pm
10th: Christmas Praise Service - Church 9:30am
12th: KS1 School Nativity 10:00am and 2:00pm
13th: KS2 Nativity 10:00am and 2:00pm
14th: Forest School - Cherry Class
15th: Celebration Assembly 9:15am
15th: End of Term Christmas Worship
2:30pm Church
15th: PTFA Christmas Social - Anchor 7:30pm
15th: Last Day T2



January

2nd: Inset Day
3rd: All return to School

School Value and Weekly reflection

Each term, we focus on a Christian Value with weekly reflection in assembly and in class.

We like to develop this further by asking you, where possible, to discuss the reflection of the week with your child(ren) at home.

This term, we are looking at:



Trust and Peace

This week, we have been looking at the story of Elijah and how he was able to trust God even when he couldn't see him. How could he do this? Because he had seen God's power through the signs that God had sent him.

Each class was then encouraged to consider the sort of things they can trust even though we cannot see them, thinking of the ways that we know they are there.

Can you talk as a family about the things that you trust?

Do you have a trust in God, that He is there even though you cannot see Him? What can you see that makes you know that He can be trusted?

Attendance

The Pioneer Federation goal is an average attendance rate of 97%, recognizing that each school day provides opportunities for learning, as well as social and emotional development.



It is noticeable when students miss school as it impacts on their progress, so we ask that you **please support us and your child by ensuring their attendance is a priority.**

Attendance this year:

Whole school: 95.3%

Maple: 97.1%

Less than 94.9% - Red

Cherry: 96.3%

95 to 96.4% - Amber

Willow: 93.2%

96.5 to 99.9% - Green

Lilac:

96.2%

**EVERY DAY
COUNTS!**
School success starts with
ATTENDANCE

Sports Awards

The PE speciality this term is gymnastics and this week, Miss Ambrose awarded the following children Sports Awards:

Jared: for always helping the younger children in dodgeball and for always having amazing enthusiasm.

Aidan: tries his hardest with every skill that we are practicing, especially with the high jumps in class.

Ida: for always pushing herself to learn new skills in gymnastics and always having a smile on her face even if the lesson is tough!

Archie: who is progressing extremely quickly, always putting in top effort especially when learning forward rolls.

Well done to you all!



Christmas Wreath Making

There is a Christmas wreath making evening on Thursday 7th December, starting at 7:00pm in school.

This will cost £20 per person, to make a wreath, with a glass of prosecco and mince pie included/

To book your slot, please contact the PTFA in person or please email them on:

ptfahartfield@gmail.com

Booking in advance is required to secure your place and payments can be made by BACs to their account:

CAF Bank
HARTFIELD SCHOOL PTFA
Sort code: 45-52-40
Account number: 00060500



St Mary's Star Skills

"Skills for learning, skills for life"



Star Skills

Each week, one pupil from each class is identified for their 'star skills' development. Staff and other pupils share their observations of the week, which are then recognised in Celebration Assembly on Fridays. With so many developing, we choose one star skill each week for the Newsletter.

Dexter: shows brilliant **leadership skills**, is confident when working in groups and shows great compassion towards the younger children

Dylan: has been demonstrating fantastic **listening skills** by using a range of adverbial openers and prepositional phrases in his chase scene through Tudor London!

Tuppence: displays amazing **creativity**. In recent English learning she worked with a group to re-enact part of a story and was a fantastic 'mum' thinking carefully about the expressions and actions she would use.

Clemmie: shows fabulous **teamwork**, happily sharing good ideas for group work activities.

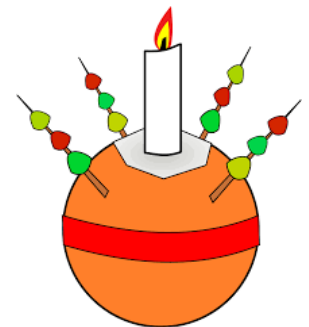
Well done to you all!

Christingle

We are making our Christingles on **Monday 4th December**, ready for our Christingle Service on **Tuesday 5th December**, 9:30am in church.

Please remember to bring your oranges into school on Monday 4th to ensure everyone is able to participate and we would love to see you in church if you are able to join us.

Thank you



Forest School

Thursday 16th November 2023

Maple Class got themselves ready for their first adventure to the woods for forest school. We talked about how to be safe by never picking or eating anything we find as it could be poisonous and make us poorly. They also learned how to shout 'Pedal Power' when we see oncoming cyclists, so that



everyone can move safely to the side and let the cyclists pass.

As we walked we talked about what season we are in; Maple Class knew that we are in autumn. We looked at the trees and the



colours of the leaves, how they had changed and fallen to

the floor. Using a stick the children collected as many different leaves as they could and pushed them onto their stick, creating a leaf kebab:

"wow, I found a big leaf",

"I have a brown one, a green one, a yellow one".

Some great perseverance on the walk from Maple Class as it is quite a way to go for small legs. Once in the woods we explored the site, talked about where it was safe to play and how to be safe around the fire circle.

By the bridge the class found a ditch full of running water. They were very keen to climb down and play in the water. Once down in the ditch they explored under the bridge, then started splashing and walking the length of the stream.

They discovered that it was deep enough in one place that the water went over the top of their wellies. We finished our session today by saying one word to describe what we enjoyed about our first adventure to the forest school site:

"water"

"leaves"

"stream"



Forest School

Thursday 23rd November 2023

Willow class were very excited to be going to the woods for their forest school adventure this afternoon and we set off with a stop at the croft for a quick game of keeper of the keys.

As we walked the rest of the way to forest school the children collected many different coloured autumn leaves with comments including: "I found a spotty one"!

We talked about how the leaves had changed colour and fallen from the trees and that this is how they knew we were in autumn.



When we arrived at forest school we sat around the fire circle, reminding ourselves of how to safe around the fire but also that we do not pick and eat anything at forest school as it can us poorly.

A few of the children stayed to help build and light the fire. They stacked to firewood largest at the bottom to smaller twigs at the top. They then persevered in using a striker to light a piece of cotton wool to add to the fire.



Once the fire was roaring the children came in small groups to toast a marshmallow, which we placed between two biscuits ready to be eaten. The class also enjoyed a mug of hot chocolate "so yummy".



There was some great free play by the class today, some choosing to swing in the hammock and others practicing their balancing on the slack line. A team of children worked together to remove some logs that were blocking the water from flowing in the ditch, using spades, trowels and their hands!



We had some rather muddy children by the end of the session, but great team work Willow Class!

We finished the session by telling each other what we had enjoyed about forest school today which included: "playing in the ditch" and "the s'mores"

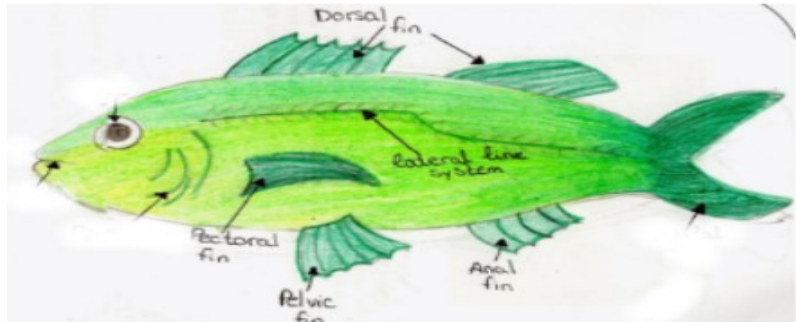


Wildlife Explorers

Wildlife Explorers have been studying vertebrates and the last two weeks we have been studying birds and fish.

FISH

- All fish live in water - some in the salty sea, and others in fresh water lakes and rivers.
- They breathe through gills, little openings on the side of the head.
- Most fish are covered in scales that protect them and help them swim.
- Swimming together in shoals makes it harder for fish to be caught by predators but not by fisherman.
- Herring and mackerel swim in shoals.
- Some fish never swim in the sea, or lakes, or rivers. They're pets, just like goldfish.



BIRDS

Our bird studies looked at eggs, from large Ostrich eggs to tiny Wren's eggs – collected many years ago.



We learnt:

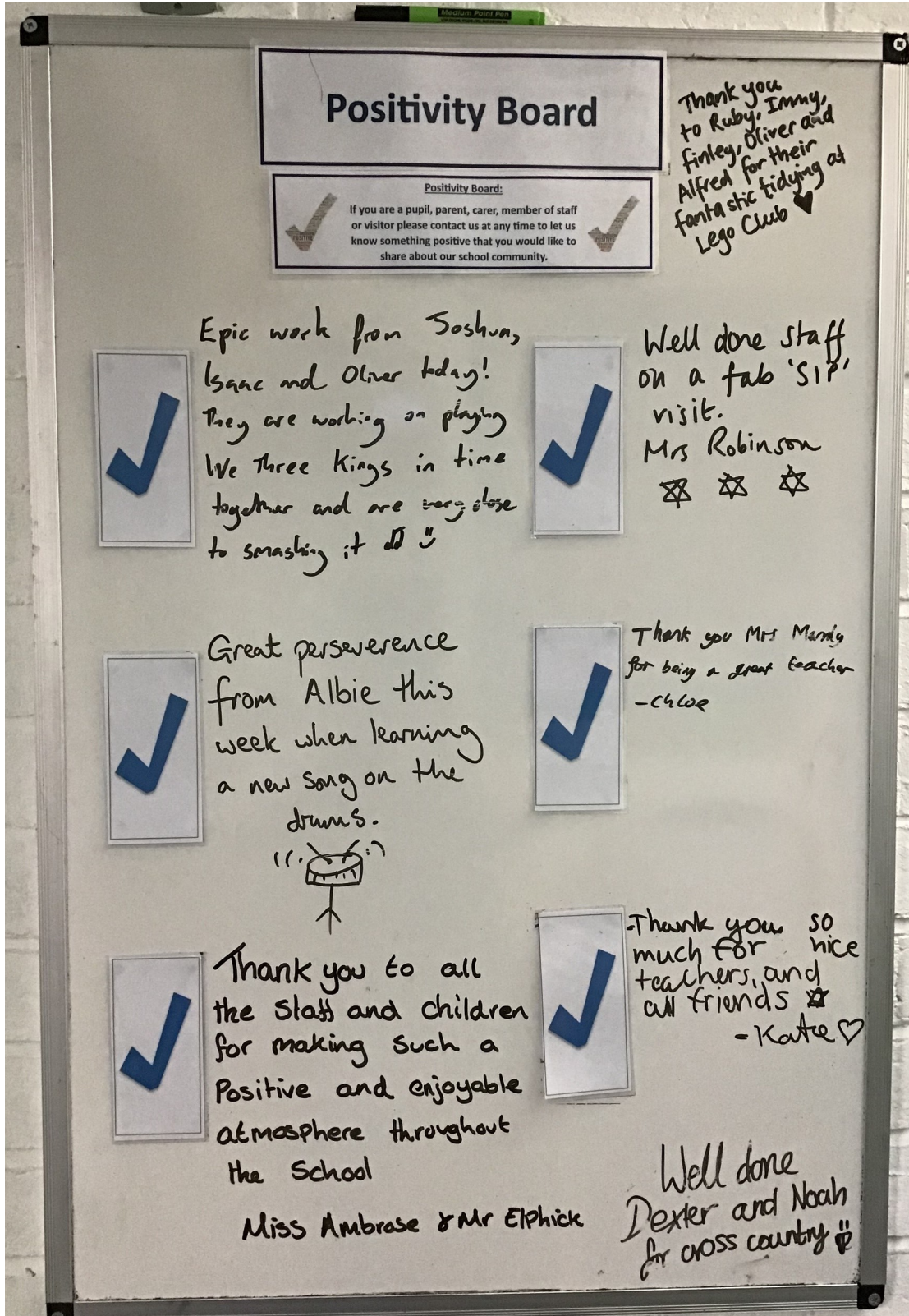
- It is illegal to take wild bird eggs now.
- Birds are disappearing and we need to take care of them.
- Birds are evolved from dinosaurs.
- All birds lay eggs and they can look very different.
- They all have beaks, feathers, two legs and two wings.
- Most birds have special feathers on their wings, so they can fly.
- Those birds that don't fly, have other ways to get around.
- The ostrich can't fly. Instead it has long powerful legs and it can run fast.
- Surprisingly, whether they hang out in the sky, land or sea, they still have lungs and need to breathe air, just like us mammals.
- Also like mammals, birds are warm blooded, so they need to keep warm.



Positivity Board

This board enables all to write positive comments, or thoughts. From parents, carers, staff, and children to all school visitors, who would like to share with others something positive about the school, their classes, the children or events.

Please contact us or come into school at any time to let us know something that you would like to add. In the newsletter every week, there will be a picture to share and celebrate the positivity within our school.



Wellbeing

'me & my mind' are the Mental Health support Teams (MHST) Parent and Carer Practitioners. They aim to be able to support parent and carers to understand children's mental health and emotional well being, and learn how a range of strategies to support their children. They offer a range of webinars and in-person sessions in East Sussex's Family Hubs and schools and we have been made aware of two events coming up in the new year:



Supporting Your Child With Anxiety & Worry - Primary School Children

📅 Thu 8 Feb 6:00 PM - 7:30 PM

📍 Online, Microsoft Teams



Supporting Your Child With Transitions To Secondary School - Primary School Children.

📅 Wed 12 Jun 6:00 PM - 7:30 PM

📍 Online, Microsoft Teams



Coming up next week:

CLASS+ are running a session at St Mary's next Wednesday, 29th November between 9:00am and 10:30am with a sensory needs focus.

CLASS+ offer support for families on the neurodiversity pathway so do come along for support and ideas.

A poster for CLASS+ Coffee & Chat Sessions. The background is a close-up of coffee beans on a wooden surface. The text is white and orange. In the top right corner is the East Sussex County Council logo. The main text reads 'CLASS+ Coffee & Chat Sessions'. Below this, it says 'Come and join the CLASS+ team and other parents at one of our Coffee and Chat sessions. No need to book just turn up. These sessions are designed for parents who have an autistic child or a child on the autism pathway. We kindly ask that you don't bring small children to this session. There will be a short section on this session that will focus around the theme of Sensory Difference.'

CLASS+
Coffee & Chat
Sessions

East Sussex
County Council

Come and join the CLASS+ team and other parents at one of our Coffee and Chat sessions. No need to book just turn up. These sessions are designed for parents who have an autistic child or a child on the autism pathway. We kindly ask that you don't bring small children to this session.

There will be a short section on this session that will focus around the theme of Sensory Difference.

Play & Creative Art Therapy



littlefolktherapy@gmail.com

What is Play Therapy?

Play therapy is a form of therapy primarily used for children and young people.

Play therapy allows young people to play out their feelings and experiences within a safe creative space.

I work creatively using sand, miniature play, art, clay, storytelling, creative visualisation, puppets, games and music to explore, connect, and help your child to understand how they are feeling.

How can it help?

- ❖ Can help children to better understand their feelings and make sense of their world.
- ❖ Increase confidence.
- ❖ Happier friendships.
- ❖ Increase self-esteem, self-worth and self-belief.
- ❖ Feel happier in everyday situations.

Play is used because it is a child's natural medium of self-expression and is essential for child development.



I am Niki and I am a Certified Play Therapist at Little Folk Therapy. I am on the register of Play and Creative Arts Therapists that has been accredited by the PSA.

Contact me for more information or to book an initial consultation at littlefolktherapy@gmail.com



ST MARY THE VIRGIN
CHURCH OF ENGLAND PRIMARY SCHOOL

CHRISTMAS FAIR

SUNDAY
3RD DECEMBER
12 to 3PM

HARTFIELD
SCHOOL

DON'T MISS A
SPECIAL VISIT FROM
Father
Christmas

TO BOOK A TIME SLOT PLEASE EMAIL
PTFAHARTFIELD@GMAIL.COM

FREE
ENTRY

- CHRISTMAS GAMES AND CRAFTS
- LOCAL BUSINESS STALLS
- SECOND HAND TOY SALE
- CAFÉ WITH FOOD SERVED BY PROFESSIONAL CHEF
- RAFFLE TICKETS AVAILABLE WITH SOME GREAT PRIZES

ALL MONEY RAISED WILL BENEFIT OUR FABULOUS VILLAGE SCHOOL



St Mary's **CHRISTMAS SERVICES**

SUNDAY 3RD DECEMBER

9.30am - Holy Communion Quiet Service for all ages

6.30pm - Advent Choral Evensong - Holy Trinity

WEDNESDAY 6TH DECEMBER

*9.30am - St Mary's School Christingle Services at
St Mary's Church*

FRIDAY 8TH DECEMBER

*6pm-8pm - Live Nativity in Hartfield Village starting on
the Croft.*

SUNDAY 10TH DECEMBER

*9.30am - Christmas Praise Service for all ages with
St Mary's School*

SUNDAY 17TH DECEMBER

9.30am - Holy Communion

6.30pm - Nine Lessons and Carols - Holy Trinity

SUNDAY 24TH DECEMBER

4pm - Crib Service

11.15pm - Midnight Holy Communion

MONDAY 25TH DECEMBER

8am - Holy Communion BCP

*9.30am - Christmas Celebration Service for all ages
(no Communion)*

SUNDAY 31ST DECEMBER

9.30am - Morning Worship

Hartfield Live Nativity

Friday 8th December 2023
Starts 6pm on The Croft



Come along to Hartfield's very special and popular Live Nativity!

- Join the crowd following Mary and Joseph through the village knocking on doors trying to find room at the inn.
- Angels, shepherds, wise men, "donkey", camels and carols.
- Procession ends in the church in a beautiful and heart warming nativity scene with baby Jesus.
- Refreshments in the church.

If your child would like to join in as an angel or shepherd
contact Alison Berry 07763 188538, ajberryartist@gmail.com

Everyone welcome – a lovely way to start Christmas!



St Mary's Church, Hartfield



HARTSLife is for Living

Hartfield Arts and Theatre Society

CHURCH STREET COMMUNITY

CHRISTMAS CAFE'S

THURSDAY, 7TH DECEMBER

2PM - 4PM

ST MARY'S SCHOOL CHOIR WILL BE SINGING CHRISTMAS CAROLS AND
MAKING DECORATIONS FOR THE CHRISTMAS TREE



THURSDAY, 21ST DECEMBER

2PM - 4PM

WITH CHRISTMAS CAROLS

COME AND ENJOY DELICIOUS HOMEMADE CAKE, TEA AND COFFEE
EVERYONE WELCOME

for more information contact Joanne Griffin on 07941 856715
or email msjoanegriffin@gmail.com

Connect@5

14th December

CHRISTMAS

11th January

25th January

8th February

22nd February

5-6.15pm
Games, Food, Bible story

For more information
Contact Matthew Marriott at
m.marriott@btconnect.com

Hartfield Village Hall

Year 5 and up

1st & 3rd Sundays, 9.30am

SUNDAY Discoverers



Dates of Sunday Discoverers
this term

17th December

7th January

21st January

4th February

Join us for each
Sunday
discoverers as
we find out
more about
God

For more information
Contact Rev Julie Sear at
revjuliesear1@gmail.com or 01892770436

LITTLE STARS

The title 'LITTLE STARS' is written in large, bold letters. 'LITTLE' is in white and 'STARS' is in yellow. There are several yellow stars scattered around the text: two on the left, two on the right, and one small yellow star above the letter 'A' in 'STARS'.

Parent & toddler group
Mondays @ St Mary's Church,
Hartfield

Upcoming dates

4th December

11th December

8th January

15th January

22nd January

29th January

5th February



9.15 to 10.45am

Tea and Coffee Provided