



St Mary the Virgin Church of England Primary School

Hartfield East Sussex TN7 4AA

Executive Headteacher: Mr James Procter

Head of School: Mrs Jane Robinson

Email: office@st-maryhartfield.e-sussex.sch.uk



Term 3 Week 5 2024

Friday 7th February 2025

Headlines from the Head

Children's Mental Health Week – celebrated at St Marys' this week with a full day of workshops with Mrs Robinson and Mrs Thurman.



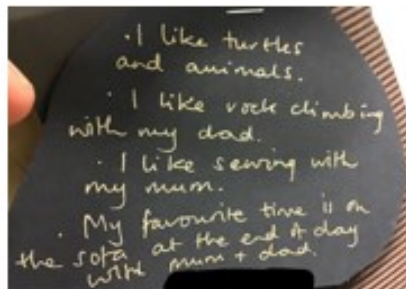
Every child chose a forest animal to go on display to show that they are part of our school community. Under each one are personal facts, loves, hobbies and fears that makes them unique!



The children who would not normally work together heard about each other in recognition of the idea that self-awareness builds resilience and if we know about each other, we can support each other better.



We would love to invite parents who are coming to our next 'CommuniTEA' event on 27th February at 9am to come along to see the board and lift flaps to find out about all our amazing unique children!



If you need the newsletter, or any other school letter, to be in a different format, please speak with Mrs Miller in the school office.

If you need help or support with access to any information, please also contact Mrs Miller.

Top Tips

Letters, emails and WhatsApp's home this fortnight. Please check below and let the office know if you have missed any:

Whole School:

After School Club Launch
Swimming update

Willow Class:

Children's Forest Project



Dates for your Diary

February

11th: Forest School extra session for Cherry with GST & Nutley schools
12th: Maple visit to Fire Station
13th: Forest School—Maple Class—**Collect from School!**
13th : PTFA Disco 3.30-4.30pm
14th: Willow Class Assembly 9am
17th to 21st - Half Term
20th: Community Café 2:00pm - 4:00pm

March

3rd to 5th: Willow class Children's Forest Planting
6th: World Book Day
6th: Forest School—Maple Class
6th: Community Café 2:00pm - 4:00pm
7th: World Book Day Showcase 9.15am for all parents
13th: Forest School—Cherry Class
14th: Cherry Class Assembly 9am (**changed from 7th**)
20th: Forest School—Willow
20th: Community Café 2:00pm - 4:00pm
21st: Maple Class Assembly 9am
26th: Lilac trip to London
27th: Forest School - Lilac Class
28th: Community Health team in school (Y6 & YR)

April

1st: Forest School extra session for Maple with GST & Nutley schools
3rd: Community Café 2:00pm - 4:00pm
7th to 21st: Easter School Holidays

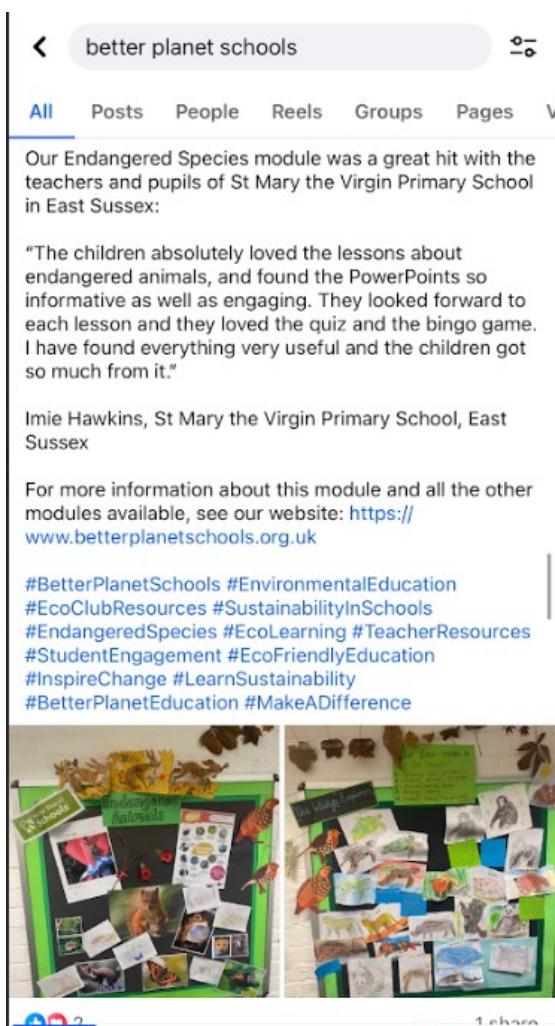
May

1st: Forest School—Maple Class



World Book Day - we would love parents to come and read to the class (share a book) at the end of any day that week - **Week beginning 3rd March** - please let Mrs Robinson know or email the office if you would like to do this (your name and date and class)

Our Endangered Species work was on social media!



Parent Guides on Statutory Assessments

Please find here the links to the Government Parent Guides on Statutory Assessments for Years 1, 4 and 6, for your information.

[Year 1 Phonics screening check](#)

[Year 4 multiplication tables check](#)

[Year 6 national curriculum tests](#)

If you need the newsletter, or any other school letter, to be in a different format, please speak with Mrs Miller in the school office.

If you need help or support with access to any information, please also contact Mrs Miller.

School Values

Love: love and respect yourself and all others, treating them as you would like to be treated.

Luke 10: 25-37

Strength: recognise people's strength and use your own to be resilient and the best you can be in all that you do.

John 6: 1-14

Faith: have faith in yourself and others, and be honest and truthful. Believe that you never know what you can achieve until you try.

Luke 5: 1-11



Each week, one pupil from each class is recognised for their engagement within our school values which underpin our vision of 'being the best we can be, in a thriving community, following the example of Jesus'. Again, these are recognised in our Celebration Assembly on Fridays but we want also to celebrate them with. This term:

Joe! - Faith—Thank you for always showing faith in yourself. You are such a super example to others by being determined and believing in yourself. You always aim to achieve so highly—keep showing how brilliant you are! We're so lucky to have you at St Mary's.

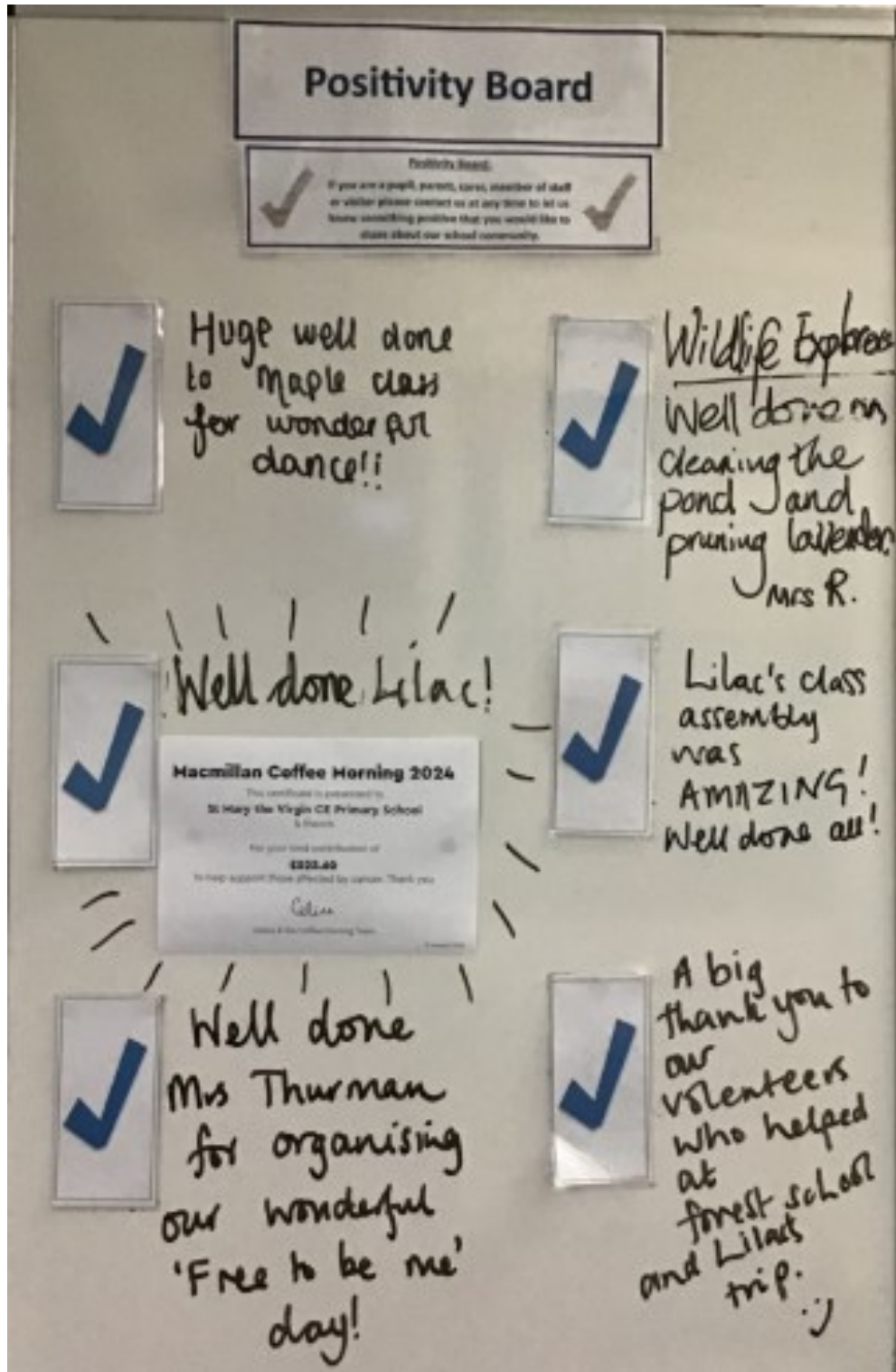
Lois!—Strength—For always giving her best to all working/learning tasks. Definitely being 'the best she can be in all she does'. Well done

Ellamy—Strength—For showing strength and trying her best in all her learning. She has made huge progress in her reading and reading lots at home. Well done Ellamy!



Positivity Board

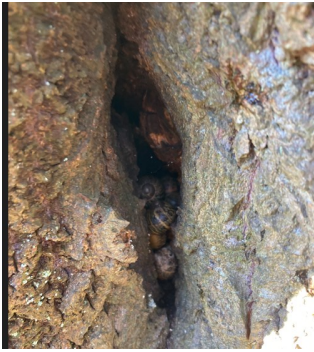
This board enables us to write positive comments, or thoughts, from parents, carers, staff, children and visitors that they would like to share with others about the school, their classes, the children or events. Please contact us at any time (or come into school) to let us know something that you would like to share. In the newsletter every week, there will be a picture to share and celebrate the positivity within our school.



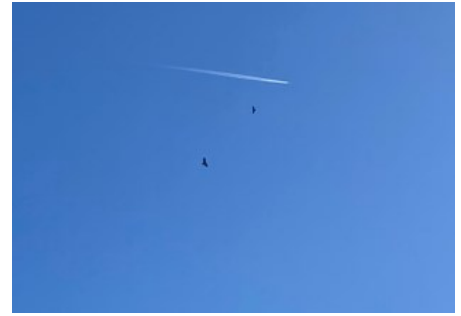
FOREST SCHOOL

Thursday 30 th January 2025

As Willow class made their way to Forest School they were very observant of wildlife that they spotted along the way. They found a small hollow in a tree that was packed with snails and called it a "Snail hideout".



They also spotted a pair of Buzzards circling high above us as we walked.



Once in the wood, Willow class took a look at a selection of bones belonging to animals found in the British countryside. Looking at them one at a time,

the children tried to guess what each one could be, and with a few clues, the class did rather well with their ID. The bones were then passed around, giving everyone the chance to take a closer look, see what they felt like and what the teeth looked like.



A fire was lit ready for the class to enjoy something to keep them warm. Once the fire was going, a kettle of water was placed on top of it to boil. The children then took it in turns to get all the cups ready for our hot drink. When the water was boiled it was added to the cups and a hot chocolate was enjoyed by the whole class.



The class were keen to head out and explore on their own, many of them chose to go to the stream. The children enjoyed removing the bridge that had been created by another class and digging in the mud.



Using salt dough the class were able to make some animal tracks, they did this by pushing a stone with a track on into the salt dough, leaving an impression of the track behind. Some chose to turn the stone over and make an impression of the animal to go with their foot print.

Some children chose to make apple and sunflower bird feeders for the birds that we share our Forest School site with. They did this by first cutting the apple into chunks and then pushing in as many sunflower seeds as they could into the flesh of the apple. The apple was then hung from a branch ready for the birds to enjoy. The children chose to hang the apples nice and high, as they wanted to make sure that it was the birds that enjoyed them not any passing deer!



FOREST SCHOOL

Thursday 6th February 2025

On arriving in the woods, Lilac class started their session today by looking at a selection of bones belonging to animals from the British countryside. Looking at them one at a time, the class tried to work out which animal each one could belong to. The class had great knowledge of the animals found in the British countryside and managed to guess almost every one correctly. The children had the



opportunity to hold and take a closer look at the bones to see what they felt like, what the teeth looked like, and how heavy they were.

A few members of the class chose to stay and get the fire going so that some water could be boiled for the whole class to enjoy something warm to drink. Once the fire was laid, they got themselves a shell, and a piece of cotton wool dipped in Vaseline ready to use a striker to light it. This did not take long at all and there was soon a roaring fire. Once the



water was boiled, a hot chocolate was made and enjoyed by the whole class.

Using salt dough, some of the class made some animal tracks to take home. They did this by pressing a stone which had an animal track on it onto the salt dough, leaving an impression behind. A couple of children chose to practice their whittling skills. They first chose a piece of Hazel growing in the woods that they liked, they then used a saw to cut it down. Making sure to follow all the safety rules, the children then proceeded to strip the bark from the Hazel and create a point at one end.



In the stream the children got stuck in to making mini dams to slow the flow of water down the ditch. They worked together to transport the logs needed to reach from one side of the ditch to the other, this created puddles of water great for splashing in!



St Mary The Virgin School
PTFA
PARENT TEACHER FRIENDS ASSOCIATION

DISCO

Date: 13th February Time: 3:15-4:30pm
Price £6 (admission and mufti day)
Treat bags to be ordered separately

easyfundraising
Support your child's future

Sign up to online cashback site, easyfundraising, and select your child's school as your chosen good cause.

Then, when you shop online with over 8,000 retailers, the retailer will give the school a free donation as a thank you for shopping with them.

It's as simple as that. No matter what you buy, from food shops to holidays and everything in between - it's a free and easy way to support your school.

How to get started

Head to easyfundraising.org.uk/support-a-good-cause and search for your child's school, or scan the QR code.

Registration is free and will take you less than two minutes to sign up!

17,000 schools and PTAs have raised over £12.5 million using easyfundraising.

Sign up and support your child's future today.

We are keen to increase visits to our school, and have spaces in many year groups, so please spread the word!



ST MARY THE VIRGIN CE PRIMARY SCHOOL

TOURS WELCOME!

FOREST SCHOOL

COME & VISIT OUR NEW & IMPROVED AREAS

WRAPAROUND CARE LAUNCHING FEB 2025!
BREAKFAST CLUB - 7.40-8.40AM
AFTER SCHOOL - 3.15-6.00PM

CONTACT US ON
01892 770221
FOR MORE INFO VISIT
[PIONEERFEDERATION.CO.UK/STMARYS](https://pioneerfederation.co.uk/stmarys)

IN YEAR SPACES AVAILABLE

Orsted
Good Provider

Opportunity

**SUPPORTING CHILDREN WITH PARENTAL SEPARATION AND DIVORCE WEBINAR
SATURDAY 26TH APRIL 2025, 10AM- 12 MIDDAY**

Welcome to our online event on **Supporting Children with Parental Separation and Divorce**. Join us for a discussion on how to help children navigate the challenges of separation and divorce in a positive and healthy way. Our expert speaker will share valuable insights and therapeutic practical tips to support children during this big life change. Register now and empower yourself with the knowledge to support your children in settling into a new family structure.

Price: £28

To book please go to: [Book Supporting Children with Parental Separation and Divorce](#)

ANXIETY TOOLKIT FOR PARENTS AND CARERS WEBINAR, SATURDAY 24TH MAY 2025, 10AM- 12 MIDDAY

Are you feeling overwhelmed by your child's anxiety? Join us for this online event where Your Space Therapies will provide you with therapeutic practical tools and strategies to help you support your child. The expert speaker will share valuable, easy to implement strategies to navigate through challenging situations and promote your child's well-being. Register now and equip yourself with the tools to better understand and support your child to manage anxiety.

Price: £28

To book please go to: [Book Anxiety Toolkit for Parents and Carers](#)



FACE
FAMILY ADVICE · COMMUNICATION · SEPARATION

February 2025
Newsletter

FACE delivers online support via zoom for parents across the UK
Talks are 90 minutes long, £24 each - Book Online at facefamilyadvice.co.uk

<p>Thursday 20th Feb 19:00 - 20:00 FREE</p> 	<p>FREE SESSION Supporting Healthy Screen Use</p> <p>A range of steps that can help minimise the harms from screens</p>
<p>Monday 3rd Feb 10:00 - 11:30 £24</p> 	<p>Supporting a Child with ADHD</p> <p>Challenging the stereotypes and giving practical interventions. Clear explanation of the condition in all its forms and extremely useful advice.</p>
<p>Tuesday 11th Feb 19:00 - 20:30 £24</p> 	<p>Facing Defiance</p> <p>Specific strategy to help parents manage defiant and challenging behaviour, especially aimed at ADHD, ODD and PDA conditions, 5 to 12 years old.</p>
<p>Tuesday 18th Feb 19:00 - 20:30 £24</p> 	<p>Cannabis & Ketamine Awareness</p> <p>Get the facts and know the harms about these two drugs so you can hold an informed conversation with your teens.</p>
<p>Tuesday 25th Feb 19:00 - 20:30 £24</p> 	<p>Understanding the Teenage Brain</p> <p>A 'must see' for all parents and teachers of teens and pre-teens. Explains why teens think, feel and behave very differently from adults and how we can support them.</p>

Understanding Anger	10 FEB 7pm
Supporting Healthy Screen Use	11 FEB 10am
Facing Defiance	14 FEB 7pm
Raising Self-Esteem	27 JAN 7pm 25 FEB 10am
Supporting Healthy Sleep	28 JAN 7pm 24 FEB 10am
Supporting a Child with ADHD	3 FEB 10am 3 MAR 7pm
Improving Family Communication	3 FEB 7pm 4 MAR 10am
AUTISM: Improving Communication	4 FEB 10am 4 MAR 7pm
Understanding Addictive Behaviour	4 FEB 7pm 3 MAR 10am
Anxiety-Based School Avoidance	10 FEB 10am 10 MAR 7pm
What is ACT?	17 FEB 10am 17 MAR 7pm
Introduction to OCD	17 FEB 7pm 18 MAR 10am
Anxiety Explained	18 FEB 10am 18 MAR 7pm
Cannabis & Ketamine Awareness	18 FEB 7pm 17 MAR 10am
Decreasing Depression	24 FEB 7pm 25 MAR 10am
Understanding the Teenage Brain	25 FEB 7pm 24 MAR 10am

Opportunity

science
BRIGHTON FESTIVAL

**HANDS-ON
HALF TERM
SCIENCE FUN FOR FAMILIES**

FEBRUARY 15-22

Find out more at BrightonScience.com

Fun, effective and affordable student led music tuition taught by professional tutors and musicians.

Here at RBMS Ltd we are proud to be teaching over 700 people a week across 45 schools and communities in East Sussex. We believe that everyone deserves to experience the life-changing power of music, RBMS music tuition is about so much more than simply learning an instrument.

-- FREE TASTER SESSION FOR ALL --

We have been able to increase the musical community within schools dramatically through our work over the past 9 years with exceptional outcomes. As musicians ourselves we understand the effect that music can have on children and adults. The development of confidence, self-awareness, creative spark, emotional intelligence, a new language, a new channel for self-expression are all visible through music tuition.

Inspiring and accessible

Our ethos and teaching values lead us to bring modern, fun, and engaging lessons to the students at affordable prices. Typically, the lessons below are held in groups of 3/4 for 30 minutes and charged at just £10.25 - £12.26 per lesson depending on the instrument/class size. We also offer flexible direct debit payment at £30.75- £34.90 per month.

We are delighted to be teaching at St Mary the Virgin CE Primary School we will be offering the following tuition services during school hours;

Guitar lessons - modern, fun and inspiring! Covering a wide range of music from the very latest releases all the way through to rock classics and beyond!
Group lesson - £10.78 per lesson or £30.75 per month.

Drum lessons - enter into the world of rhythm, any style - any ability.
Group lesson - £12.26 per lesson or £34.90 per month.

We hope to see you soon!

RBMS LTD
Website: www.rbmsmusic.com
Phone: 01273 805666
Email: office@rbmsmusic.com

Book a FREE lesson via our website now!

CHAMELEON THEATRE

ONE-OFF DRAMA WORKSHOP

Age 4-6yrs | 16:00-17:00
Age 7-9yrs | 17:15-18:15

ONLY £5!

**Location:
Baptist Church,
Forest Row**

25th of Feb

FIND US ON FACEBOOK
[@CHAMELEON THEATRE](https://www.facebook.com/CHAMELEONTHEATRE)
OR
SEND US AN EMAIL
JUNO.PHITIDIS@GMAIL.COM

St Mary the Virgin Church of England Primary School, Hartfield, East Sussex, TN7 4AA

Tel: 01892 770221 Email: office@st-maryhartfield.e-sussex.sch.uk Website: www.pioneerfederation.co.uk

Active Education



Fun Football Camp

ae active education sussex

FEBRUARY HALF TERM

Come and join us for our Fun Football Holiday Camp, with plenty of football activities including: Football Tennis, Foot Golf, Football Rounders, Shooting Drills, Tournaments, Skill Activities, Goalkeeping Drills, Matches, Individual Challenges and many more!

VENUES **SCAN ME TO BOOK NOW!**

- HAILSHAM HOLIDAY CAMP**
Hailsham Primary Academy, Bulrush Lane, Hellingly, BN27 4FB
- EASTBOURNE HOLIDAY CAMP**
Ocklynge Junior School, Victoria Drive, Eastbourne, BN20 8XN

DATES

- HAILSHAM HOLIDAY CAMP**
Monday 17th February 2025 - Friday 21st February 2025
- EASTBOURNE HOLIDAY CAMP**
Monday 17th February 2025 - Friday 21st February 2025

PRICES

- HAILSHAM HOLIDAY CAMP** *Hailsham Holiday Camp Main Camp Day Price Increase from 1st March 2025
Breakfast Club (07:45-08:45) - £6.50 per session
Main Camp Day (08:45-15:15) - £25.00 per session
After Camp Club (15:15-16:15) - £6.50 per session
- EASTBOURNE HOLIDAY CAMP**
Breakfast Club (07:45-08:45) - £6.50 per session
Main Camp Day (08:45-15:15) - £27.50 per session
After Camp Club (15:15-16:15) - £6.50 per session



Multi Activity Holiday Camp

ae active education sussex

FEBRUARY HALF TERM

Come and join us for our Multi Activity Holiday Camp, with plenty of activities including: A wide selection of Sports, Fencing, Gymnastics, Dance, Performing Arts, Painting, Art and Craft Activities, Movies and many more!

VENUES **SCAN ME TO BOOK NOW!**

- HAILSHAM HOLIDAY CAMP**
Hailsham Primary Academy, Bulrush Lane, Hellingly, BN27 4FB
- EASTBOURNE HOLIDAY CAMP**
Ocklynge Junior School, Victoria Drive, Eastbourne, BN20 8XN

DATES

- HAILSHAM HOLIDAY CAMP**
Monday 17th February 2025 - Friday 21st February 2025
- EASTBOURNE HOLIDAY CAMP**
Monday 17th February 2025 - Friday 21st February 2025

PRICES

- HAILSHAM HOLIDAY CAMP** *Hailsham Holiday Camp Main Camp Day Price Increase from 1st March 2025
Breakfast Club (07:45-08:45) - £6.50 per session
Main Camp Day (08:45-15:15) - £25.00 per session
After Camp Club (15:15-16:15) - £6.50 per session
- EASTBOURNE HOLIDAY CAMP**
Breakfast Club (07:45-08:45) - £6.50 per session
Main Camp Day (08:45-15:15) - £27.50 per session
After Camp Club (15:15-16:15) - £6.50 per session

Opportunity

UK Rhino Challenge at Pippingford on the Ashdown Forest on 4th May 2025.

This cycle orienteering challenge will raise money for Rhino Ark's important conservation projects in Kenya. [See our work here](#)

Families can enter individually or if two or more teams from St Mary's sign up collectively then your school could win the special Youth Group prize. More details on www.ukrhinochallenge.co.uk or book at early bird prices [here](#)



Families from our school

Sunday 4th May 2025

Teams of up to five cyclists required for the

UK Rhino Challenge

A unique cycle orienteering adventure for all of the family. Test your teamwork with our unique challenges while having fun amid the bluebells in the Ashdown Forest.

The entry fee will raise funds to save wildlife and protect habitats for future generations.
[Find out more about Rhino Ark's projects](#)

Book here

More details on www.ukrhinochallenge.com

Opportunity



LEGO CLUB

Kids aged 8-11
BRIDGES, Edenbridge
High Street, TN8 5AJ

25/2, 4/3, 11/3, 18/3, 25/3, 1/4
Tuesdays 3.30pm-4.30pm
in term time

For more information & to book a place
contact:
07900 890 159 mary@bridgescentre.org

Sevenoaks

THERE'S NO PLACE LIKE home! 15-23 FEBRUARY



Join us this February half term to celebrate houses and homes

Have a go at hands on activities and follow the house hunting trail around our 40 acres site.



Weald & Downland Living Museum
Singleton | Chichester | PO18 0EU



Find out more at wealddown.co.uk
01243 811363

Parent & Carer



Lunch and Learn Webinars with 'Me & My Mind'

Do you have an anxious child who worries a lot?
If you do, these FREE bitesize webinars maybe for you.

Supporting a Child Who Worries (ages 7-11)

50-minute webinar, 1:00pm to 1:50pm

Tuesday 22nd October 2024

Thursday 27th February 2025

Wednesday 11th June 2025

Moving up to Secondary School

50-minute webinar, 1:00pm to 1:50pm

Supporting a worrying child with transitions

Wednesday 21st May 2025

For more info and to book scan the QR code or visit:



www.tickettailor.com/events/mentalhealthandwellbeingeducation

If you have any questions please email
mhst.info@eastsussex.gov.uk

These webinars are perfect to watch whilst eating your lunch, whether you are at work or home. You can keep your camera and microphone off.

All webinars are run using Microsoft Teams. You can access this on your phone or computer. You will be provided with the link when you book.



Price & Buckland
SCHOOLWEAR SINCE 1959

NEW SCHOOL UNIFORM WEBSITE LAUNCH

On the 11th of February we will launch our **NEW** website. The URL remains: www.price-buckland.co.uk



Website QR code. This will take you to the homepage to search for your school



If you have ordered from our website before, go to the **Account Section** and **re-set** your password. You can use the same password that you have currently.



You can then see previous orders and manage your account.

Any Questions? Call us on 01159 640827

Opportunity

NEW! Harmony at home

For parents/carers that are still together, but are experiencing regular disagreements and conflict



Everyone has arguments from time to time - they are a normal part of relationships. How they are resolved is the most important thing. If they happen often, are intense or not resolved properly they can negatively affect children's mental health and wider development.



Wednesday 5th February
To
Wednesday 26th March
10:00-12:00

Harmony at home is designed to help parents/carers to help themselves at the times when arguing and poor communication are overwhelming their relationship.

7 Sessions over 8 weeks,
with a break for half term

Fussy Eating Free online workshop



Join
us!

Fed up with
stressful
mealtimes?
We're here
to help...



As parents we want our children to eat well
- and to enjoy mealtimes together

Come along and get support and new ideas for:

- How to encourage your child to try new foods - and begin to enjoy them!
- Child-friendly foods that provide what they need to grow and be healthy
- Happier family mealtimes

Event details:

Delivered by the East Sussex School Health Service. To join Call: 0300 123 4062 Complete: Online referral form: <https://www.kentcht.nhs.uk/forms/school-health-ser vice-east-sussex-referral-form/>



Lunch and Learn Online Workshops and In-person Family Hub Workshops with 'Me & My Mind'

Do you want to learn about children's mental health and how you can support your child with their wellbeing? If you do, these FREE webinars or our in-person small group workshops may be for you!

Lunch and Learn Webinars

How to support your child with worry and anxiety

Thursday 27th February 2025, 1pm, to 2pm

Wednesday 11th June 2025, 1pm to 2pm

How to support a worrying child with transition to secondary

Wednesday 21st May 2025, 1pm to 2pm

Small group in-person sessions

Supporting primary school children with anxiety and worry

Wednesday 2nd October 2024, 10am to 12pm @ Sidley Family Hub

Tuesday 8th October 2024, 10am to 12pm @ Uckfield Family Hub

Monday 27th January, 10am to 12pm @ Hailsham Family Hub

Thursday 30th January, 10am to 12pm @ Devonshire Family Hub

Wednesday 5th February, 12pm to 2pm @ Sidley Family Hub

Monday 10th February, 12:30pm to 2:30pm @ Peacehaven Family Hub

Monday 10th March, 12:30pm to 2:30pm @ Lewes Family Hub

Tea/Coffee and biscuits will be available, and we will be providing activities to make some items to take home with you to do with your child/ren

For more info and to book scan the QR code or visit:



www.tickettailor.com/events/mentalhealthandwellbeingineducation

If you have any questions, please email mhst.parentteam@eastsussex.gov.uk

The Parenting Team



EarlyBird Plus

from the National Autistic Society

Appropriate for parents of children aged 4-9 years who are diagnosed with autism or on the pathway to diagnosis

EarlyBird Plus is a programme for parents/carers of autistic children aged 4 to 9 years from the National Autistic Society. This programme empowers parents to understand more about autism in their children.

The aim of the EarlyBird plus programme is to equip parents/carers to develop a greater understanding of their child's needs whilst waiting for or following diagnosis. It also aims to develop a consistent approach across settings (e.g. home and school)

Thursday 30th January - Thursday 20th March
10:00-12:00pm

7 sessions over 8 weeks, with a break for half term

To book your place, please contact us:

01424 725800

EH.0-19parentingteam@eastsussex.gov.uk



St Mary the Virgin Church of England Primary School, Hartfield, East Sussex, TN7 4AA

Tel: 01892 770221 Email: office@st-maryhartfield.e-sussex.sch.uk Website: www.pioneerfederation.co.uk

Opportunity

STUDY SMART
Free Online Courses

aspire Education

ncfe. | cache

Education & Skills Funding Agency

Fully Funded School Support Course

Available in Levels 1, 2 & 3

*Please go to our website for more detailed information.

6 Week Course
Mon - Fri
Daily sessions
1st session 9:30 - 11:30am
2nd session 12:30 - 2pm

www.studysmartuk.online

We are looking to fill 150+ School Support vacancies in local schools (e.g. Teaching Assistants, SEN Support, Behaviour Mentors, 1-1 Classroom Support, Cover Supervisors etc). These roles are available in both full time and part time positions.

Please go to our website address given above, or scan the QR code for more information.

These are 6 week courses, full time, intensive courses, with online guided learning sessions within school hours.
If you are earning less than £23,500 per annum or are in receipt of any benefits, you will be eligible for a fully funded place with us.



CUES
Coping with Uncertainty in Everyday Situations

Uckfield Family Hub

Is your child experiencing feelings of anxiety? Are you looking for information on how to help them? CUES is a training course for parent/carers to support their children with the feelings of anxiety they are experiencing.

CUES workshops will be running throughout the year in Family Hubs across East Sussex. The workshops are once a week for the duration of five weeks. Please sign up to a workshop using the QR code below

“Supportive and safe space”

“Breath of fresh air”

“A community of parents”

“Helping you to deal with your child”

Scan the QR code for more information

Uckfield Family Hub,
1 Manor Close,
Uckfield, TN22 1DL

