



St Mary the Virgin Church of England Primary School

Hartfield East Sussex TN7 4AA

Executive Headteacher: Mr James Procter

Head of School: Mrs Naomi Fry

Email: office@st-maryhartfield.e-sussex.sch.uk



Term 6 Week 3 2026

Monday 19th June 2026

Being the best we can be in a thriving community, following the example of Jesus.

Headlines from the Head

Dear St Mary's Families,

We have had a great first 3 weeks of Term 6. It has been very full, with all sorts of wonderful activities. We hope you enjoy reading about what our children have been up to.

Next week looks set to be very warm. Please ensure that you send your child to school with a sunhat, water bottles and with sun cream applied. Children may bring in sun cream to reapply, but please make sure that these are named and remind your child that it is not to be shared, but for their own use.

Celebrating Winnie the Pooh's 100th Birthday

As Winnie-the-Pooh turns one hundred in 2026, Ashdown Forest, the original Hundred Acre Wood, celebrates with a brand-new story!

On **Thursday 2nd July** we are welcoming *The Big One Hundred* to St Mary's to run workshops with the children around the creation of this new story.

More information below...

<https://thebigonehundred.co.uk/>



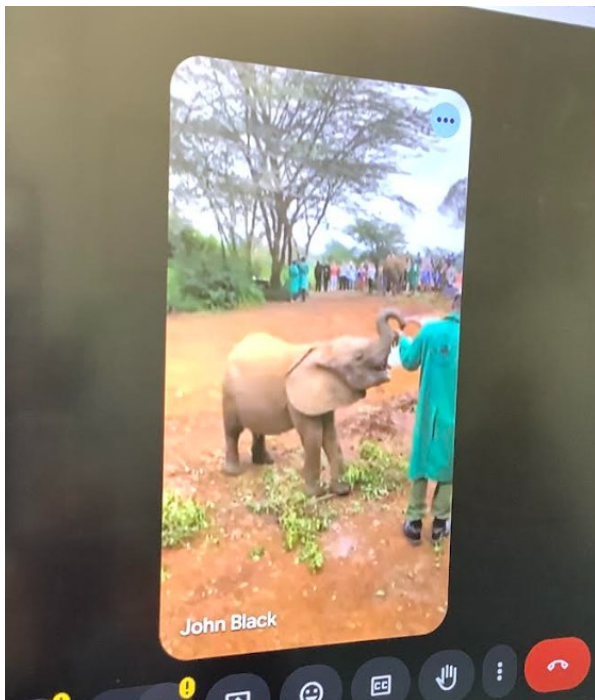
If you need the newsletter, or any other school letter, to be in a different format, please speak with Mrs Miller in the school office.

If you need help or support with access to any information, please also contact Mrs Miller.

Cherry Class

Cherry Class were so lucky to have a video call with Mr Black while he was in Nairobi last week.

It wasn't an ordinary video call - because he was at the Sheldrick Wildlife Trust with the baby elephants that we have adopted over the last three years!



Not only did we see a herd of baby elephants being bottle fed by their keepers, but we also saw a baby rhino called Titan and his best friend, a baby zebra called 'Naughty'!

We were thrilled to have such a special experience. Thank you so much, Mr. Black! (*Mrs Thurman*)



Year 6 Wicked Trip

Year Six had a brilliant time in London on Wednesday.

We arrived just in time to see the Changing of the Guard at Buckingham Palace before heading to St James' Park for a picnic.

We had fantastic seats to watch Wicked and the show was thoroughly enjoyed by all.

What a great day!



Year 6 Leavers Diocese Service

On Thursday 18th June, the Year 6 pupils joined other Year 6 pupils from other school across Sussex t All Saints Church in Crowborough for the Diocese Leaver's Service. Abbie and Joe represented our school brilliantly, delivering the first reading of the service.

"It was great fun having a picnic lunch opposite the church." Joshua

"Seeing all the banners from each school was very special." Albie

"I liked being able to join together with other schools to sing the songs we had been learning, particularly doing the harmony." Lucas

"I felt honoured to carry the Banner for St Mary's School." Rory



Y5 Art Day



On Wednesday 17th June, whilst Year 6 were in London. Year 5 had a fabulous art day run by our wonderful Mrs. Carpenter.

We spent the morning doing squeegee paintings with acrylic paint, making Indian ink paintings on postcards, creating scratch images with oil pastels and exploring our own art projects.

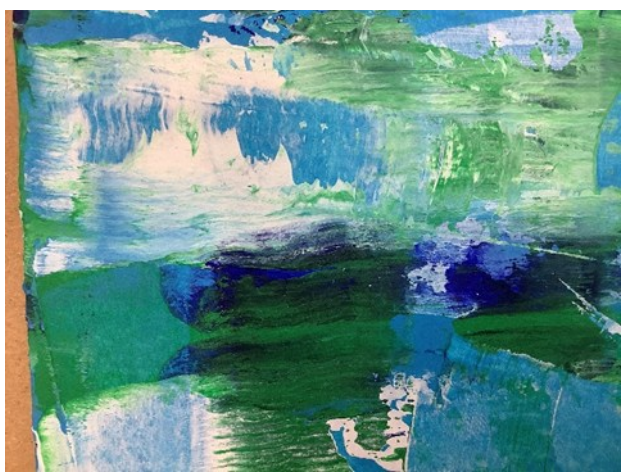
In the afternoon, the children made props and sets for their upcoming school play.

This is what the children thought:

“We made squeegee art and it was very fun because I came up with different ideas.” Reece

“My favourite part was making my prop- a cookbook.” Helena

“It was a fun day of art, so chill and good vibes.” Jax



Congratulations!



Sami won the 'Team Spirit Award' for football in his U8 Football team!

William received a trophy for the 'Most improved player of the season'



Top Tips

Letters, emails and WhatsApp's home this fortnight. Please check below and let the office know if you have missed any:

Whole School— photography and filming in school

Free taster music lessons with Red Butler Music

Menu changes next week!

Lilac— Term 6 PSHE

Leavers video—invite to send in photos for Y6

Catch the Train Race information

Mrs Leahy Y6 message re Pooky
Knightsmith

Willow— Y3/4 Football tournament

Maple - Questions about the ocean



Dates for your Diary

June

24th: September Reception & parents 'Pop in and Play'

25th: Forest School for Willow class

26th: Sports Day & PTFA BBQ

30th: Maple's rearranged trip to Hodore Farm (AM)

July

2nd: Forest School for Maple class

9th: September Reception & parents 'Drop and Go'

9th: Forest School for Lilac class

15th: Lilac class summer production at Village Hall 6pm

17th: September Reception & parents 'Play on the Croft'

17th: PTFA Summer Disco

21st: Leavers Service at St Mary's church

21st: End of Term 6 for children

22nd: INSET Day

September

1st: Last day of the holidays

2nd: INSET Day no. 1

3rd: INSET Day no. 2

4th: Children Y1-Y6 return to school

7th: Reception children start

October

20th: Individual and sibling photos

November

27th: Flu spray immunisations (pm)



Absence from school

Please may we remind parents that if your child is absent from school to either call and leave a voicemail message on the telephone absence line, or email to the school office as soon as possible on *each day* of absence (unless it is for a number of days due to holiday)

Absence messages from the teachers on the gate in the morning sometimes get delayed being passed to the office, which affects closing the registers on time, thank you!

If you need the newsletter, or any other school letter, to be in a different format, please speak with Mrs Miller in the school office.

If you need help or support with access to any information, please also contact Mrs Miller.

Free School Meals are changing from September

A reminder that the holiday supermarket voucher scheme (**HUGGG vouchers**) for pupils eligible for benefits-related free school meals has now ended.

Support for families continues to be available, but it will be assessed based on individual household circumstances and need. Families can find out more about support available through these links:

[Crisis and Resilience Fund](#)

[Cost of living support](#)

Families eligible for free school meals can get free activities and food through [Holiday food and fun](#).

Your child may qualify for free school meals from September 2026.

From 1 September 2026, eligibility is expanding so more families can get support. If your child is not currently eligible and you receive Universal Credit, you'll be able to apply now.

Apply now: [Free school meals - East Sussex County Council](#)

The free school meals eligibility criteria will change from 1 September 2026, and the transitional protection rules will cease at the end of this academic year.

All families in receipt of Universal Credit will now qualify for free school meals. However, there will be two categories of benefits-based free school meals:

- **Targeted FSM** – This will continue to be based on the existing threshold and will cover pupils from households receiving Universal Credit with annual household earnings of £7,400 or less. In addition to receiving free meals, pupils eligible for targeted FSM will attract pupil premium and other disadvantage funding for their schools.
- **Expanded FSM** – This is a new category covering pupils who do not qualify for targeted FSM, but who are in households receiving Universal Credit. Pupils eligible for expanded FSM will receive meals only and will not qualify for pupil premium or other associated benefits, such as free HAF activity clubs or low-income transport.

Ever 6 FSM Cohort

Pupils who are, or have been, eligible for FSM within the last six years are part of the 'Ever 6' FSM cohort. This is used for disadvantage funding and accountability purposes.

Following the expansion of FSM, the Ever 6 FSM cohort will be based on targeted FSM only (not expanded FSM).

Parents of children already in receipt of FSM **do not** need to reapply.

School Values

Love: love and respect yourself and all others, treating them as you would like to be treated.

Luke 10: 25-37

Strength: recognise people's strength and use your own to be resilient and the best you can be in all that you do.

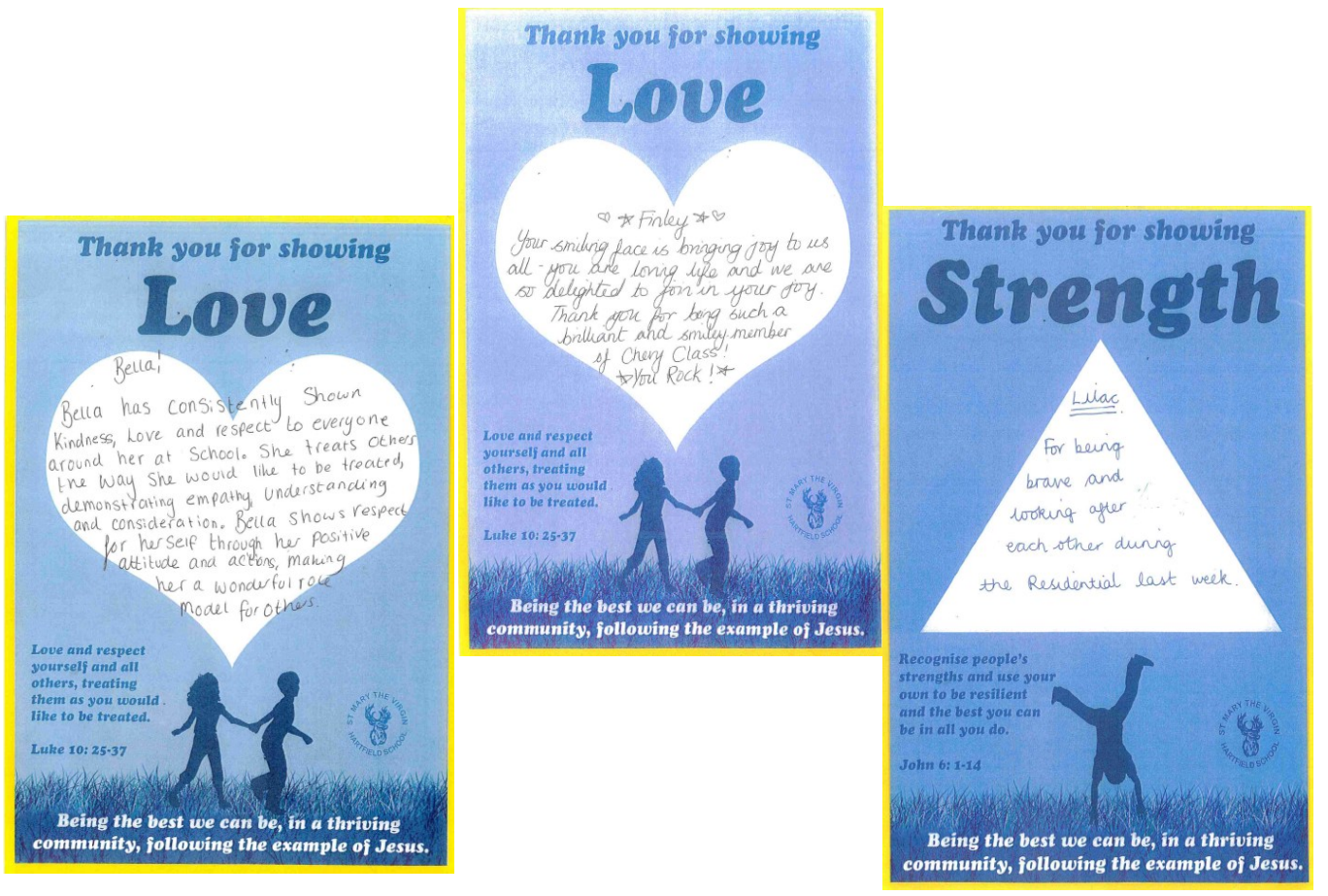
John 6: 1-14

Faith: have faith in yourself and others, and be honest and truthful. Believe that you never know what you can achieve until you try.

Luke 5: 1-11



Each week, one pupil from each class is recognised for their engagement within our school values which underpin our vision of 'being the best we can be, in a thriving community, following the example of Jesus'. Again, these are recognised in our Celebration Assembly on Fridays but we want also to celebrate them with you. Since the last newsletter:



Forest School Term 5-

As we made our way to Forest School we stopped for a game of Eagle Eye, as the grass is almost tall enough to hide in. We gave the class the count to 10 to hide, and the whole class disappeared! Every time the Eagle's eyes are closed, they had to emerge from their hiding spot, get to the Eagle and back to hide before the Eagle eyes are open, otherwise they are caught and are out.



Last term the classes have been using all the new fresh green leaves that have come out on the trees to create some beautiful, hammered leaf prints. This was done by gathering up a selection of different leaves of all shapes and sizes. These were then placed



on half of a piece of fabric. Folding the fabric in half, a hammer was then used to bash the fabric all over. With every bash, the juices from the leaves came out onto the



fabric creating a symmetrical picture.



As Cherry class made their way to Forest school, they found two long branches that had fallen from the trees along the Forest Way. Working in teams, they carried these branches all the way to Forest School. The branches were then cut up by the children using a saw and added to the dead hedge that is being built around the back of the fire circle.

In the woods, the children have practised their sawing skills by cutting up firewood, have been creative in den construction, and climbed trees.



PIONEER
FEDERATION

Pioneer Federation

TWELVE CLUMPS CHALLENGE!

32km sponsored walk around the 12 Clumps
of the Ashdown Forest!

Minimum sponsorship **£25**

To register or find out more, e-mail:
ptfahartfield@gmail.com

Deadline for entries: **June 12th**

— EVENT DATE: —
JULY 4TH!!

St Mary the Virgin Church of England Primary School, Hartfield, East Sussex, TN7 4AA

Tel: 01892 770221 Email: office@st-maryhartfield.e-sussex.sch.uk Website: www.pioneerfederation.co.uk

Uniform Orders for September 2026

The correct ordering link is available on your school website, and below if needed)

[St Mary The Virgin C of E Primary School](#)

Please note an update on delivery charges: the correct home delivery cost is £4.50 via Royal Mail. Price and Buckland also offer free delivery on orders over £65 and Klarna on orders over £75.

Orders to home should be placed before the cut-off date of 1st August.

Final delivery into school is the week commencing 13 July 2026, (then it pauses until week commencing 14 September 2026).

N.B. Parent order cut-off for delivery that week of 13th July is [28th June.](#)

The advertisement features two young girls in school uniforms. One girl is wearing a blue sweater and a black skirt, while the other is wearing a maroon sweater and a black skirt. They are standing on a grey surface. The background is a light grey wall.

price-buckland.co.uk Price & Buckland
SCHOOLWEAR SINCE 1989

ORDER YOUR UNIFORM ONLINE
QUICK, EASY, FAST

ORDER BY 1ST AUGUST
for pre-September delivery.

Orders placed after this date risk arriving after the start of term due to peak demand.

RECYCLED MATERIAL

Scan Me!

Trustpilot

★★★★★
"Great quality. Fast and friendly service"

SIGN UP FOR EXCLUSIVE DISCOUNTS AND OFFERS!

St Mary the Virgin Church of England Primary School, Hartfield, East Sussex, TN7 4AA

Tel: 01892 770221 Email: office@st-maryhartfield.e-sussex.sch.uk Website: www.pioneerfederation.co.uk

We are keen to increase visits to our school, and have spaces in many year groups, so please spread the word about our open events, and share and like our Social Media posts!



PTFA



Support your child's future

Sign up to online cashback site, easyfundraising, and select your child's school as your chosen good cause.

Then, when you shop online with over 8,000 retailers, the retailer will give the school a free donation as a thank you for shopping with them.

It's as simple as that. No matter what you buy, from food shops to holidays and everything in between - it's a free and easy way to support your school.





How to get started

Head to [easyfundraising.org.uk/support-a-good-cause](https://www.easyfundraising.org.uk/support-a-good-cause) and search for your child's school, or scan the QR code.

Registration is free and will take you less than two minutes to sign up!



17,000 schools and PTAs have raised over £12.5 million using easyfundraising.

Sign up and support your child's future today.





PTFA Newsletter

January 2026

Upcoming Events

- Maple class bake sale - 10th Feb
- School Disco - 13th Feb
- Someone special gifting - 11th March
- Community Bake Sale - TBC
- School Disco - 24th April
- Mayfair - 22nd May
- Someone special gifting - 19th June
- Sports Day & PTFA BBQ - 26th June
- School Disco - 17th July

We Need You!

After an incredible 6 years of dedication, our wonderful Chairperson Kerry Powell has stepped down for a well earned rest!

We're excited to be looking for someone new to step into this role. If you're interested in becoming the PTFA Chairperson, or would like to find out more, please have a chat with Katie or Helen.

If the Chairperson role is not for you, but you'd still like to get involved, we'd love to expand our team. Please let us know if you would like to be added to our 'Regular Helpers' list - Thank you!

Contacts

- Vice-Chair - Helen Law
- Secretary - Katie Schreiber
- Treasurer - Beth Hart
- Regular Helpers:
 - Caroline Halawa & Claire Levis
- E-mail: PTFAhartfield@gmail.com

Fundraising Focus

This year, our focus is supporting the school with the replacement of the playground trim trail. We are delighted to be involved in this exciting addition to the children's daily routine.

We will continue to raise vital funds through the remainder of this academic year through a range of regular activities, including class bake sales, discos, special person gifting and our Sports Day BBQ. You can support these fundraising efforts by taking part in our events, using Easyfundraising when you shop, or purchasing second-hand uniform.

Thank you for your fantastic support!

PTFA

FUNDRAISING EVENTS

April – July

April 16th
Cherry & Willow Class Bake Sale & Mini Marathon
 Join us at **The Croft** to cheer on the children.
 Hot drinks & cakes in the Pavilion.

April 24th
School Disco!
 3.15pm - 4.30pm • School Hall
 Order form coming soon!

May 22nd
Mayfair
 Maypole Dancing & Bake Sale
 Prizes for best bakes!

June 19th
Special Person Gifting - Father's Day
 A surprise gift prepared by the children.

June 26th
Sports Day & PTFA BBQ
 Cheer on the kids & enjoy the BBQ!

July 17th
Summer Disco!
 Let's celebrate our Year 6 Leavers
 and give them a brilliant send-off!

Thank you for your fantastic support!

St Mary's Church Information



Sunday Discoverers

Discover us every 1st & 3rd Sunday morning at 9.30am, as we find out more about our Creator

Upcoming dates: 21st June, 5th July

For more information please contact Lisa Gibbs-Murray at admsmht@gmail.com or 07927 939116



Sunday CONNECT

For young people aged 10+

Held in The Oast from 9.30am, for breakfast and chats, before heading back to church for communion.

Sunday dates are:
21st June
5th July

Come, relax and chat as we build relationship with Jesus and each other!!

For more information please contact Matt Marriott at m.marriott@btconnect.com



CONNECT

For young people aged 10+

Join us for games, food and fun
From 5-6.15pm in the Village Hall

Thursday dates are:
2nd July
16th July

For more information please contact Matt Marriott at m.marriott@btconnect.com



LITTLE STARS

Parent & toddler group
Mondays @ St Mary's Church, Hartfield

Upcoming dates
22nd June 6th July
29th June 13th July

9.15 to 10.45am
Tea and Coffee Provided admsmht@gmail.com